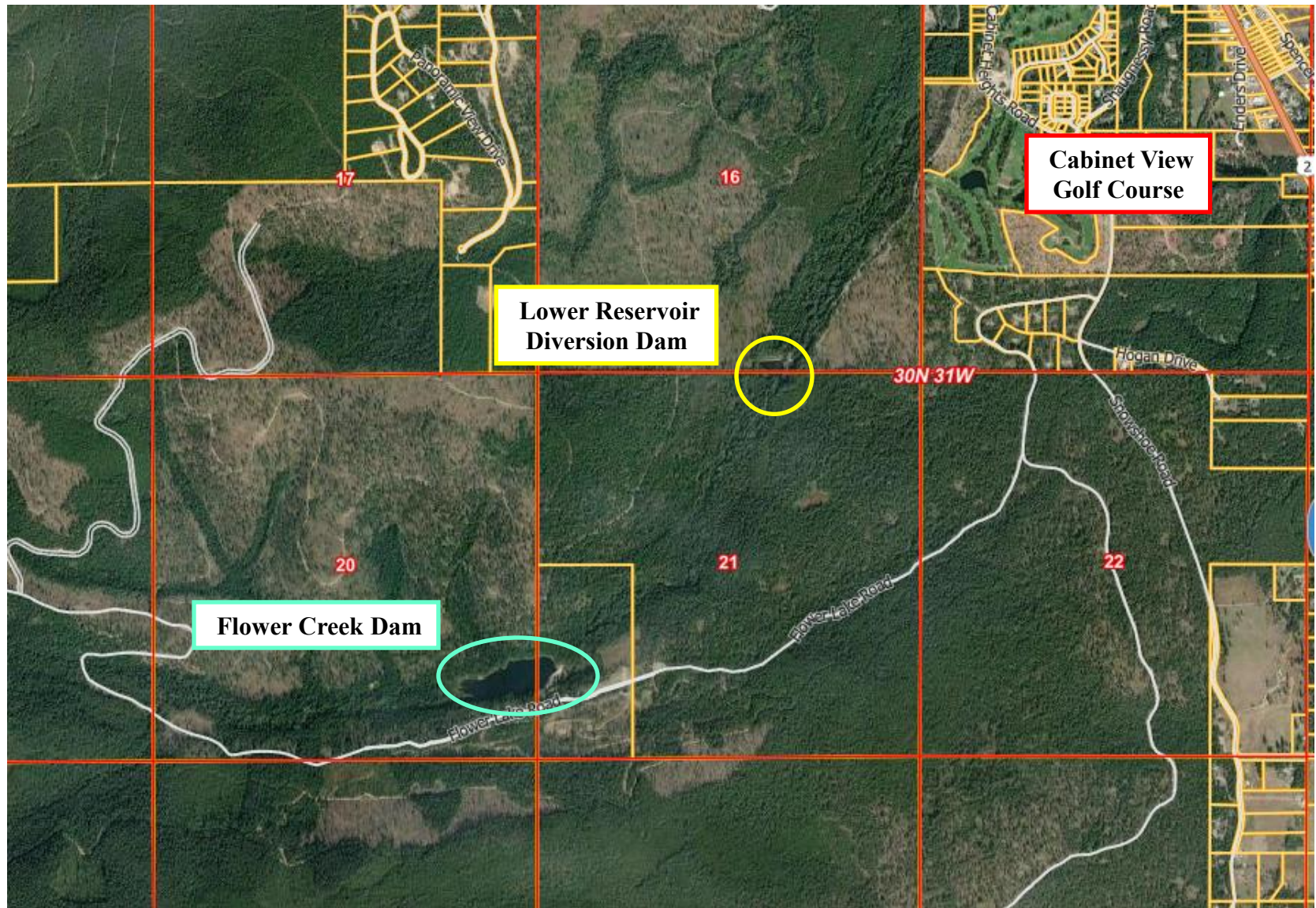


Flower Creek Dam and Lower Reservoir/Diversion Dam



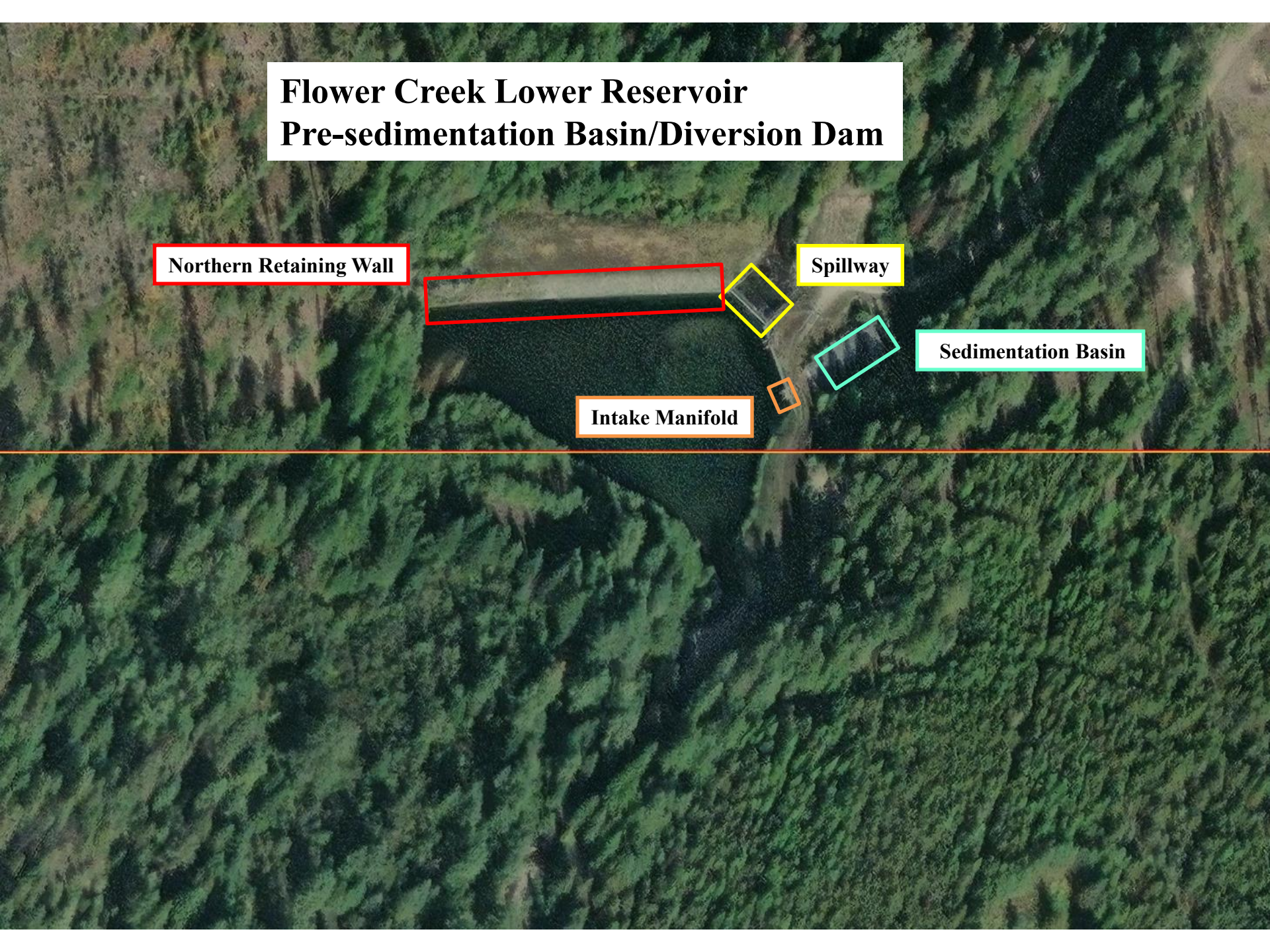
Flower Creek Lower Reservoir Pre-sedimentation Basin/Diversion Dam

Northern Retaining Wall

Spillway

Sedimentation Basin

Intake Manifold



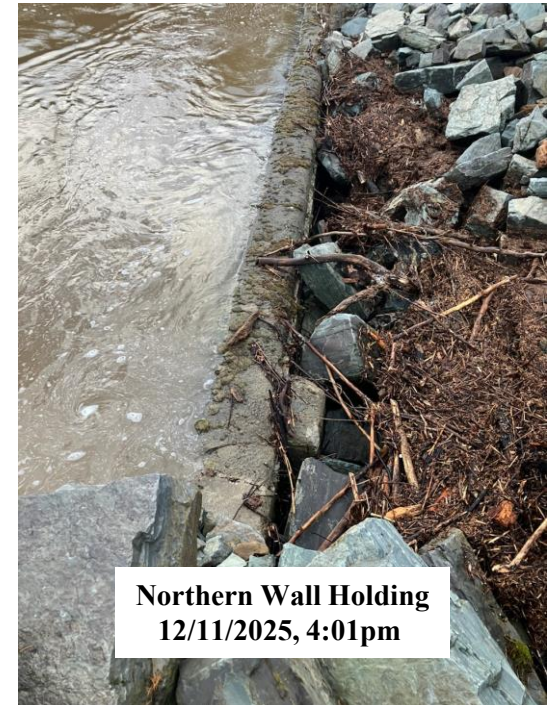
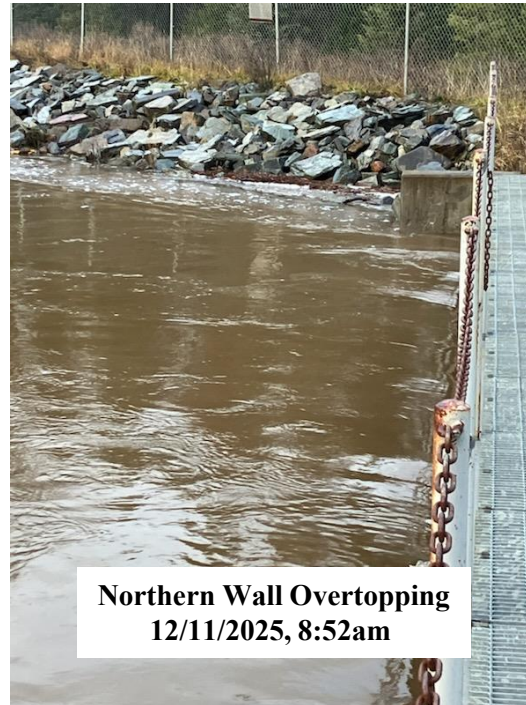
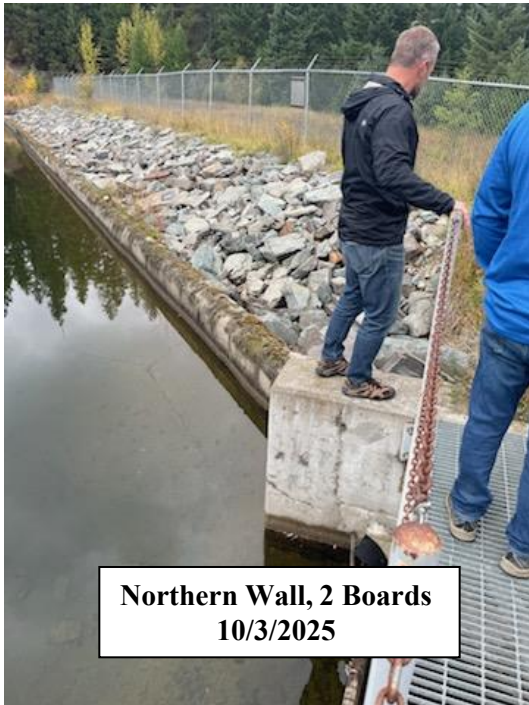
Spillway October 2025



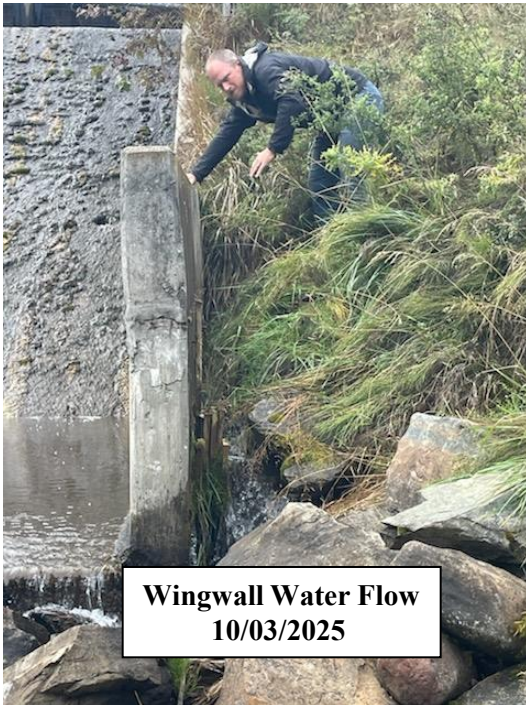
Reservoir November 2025



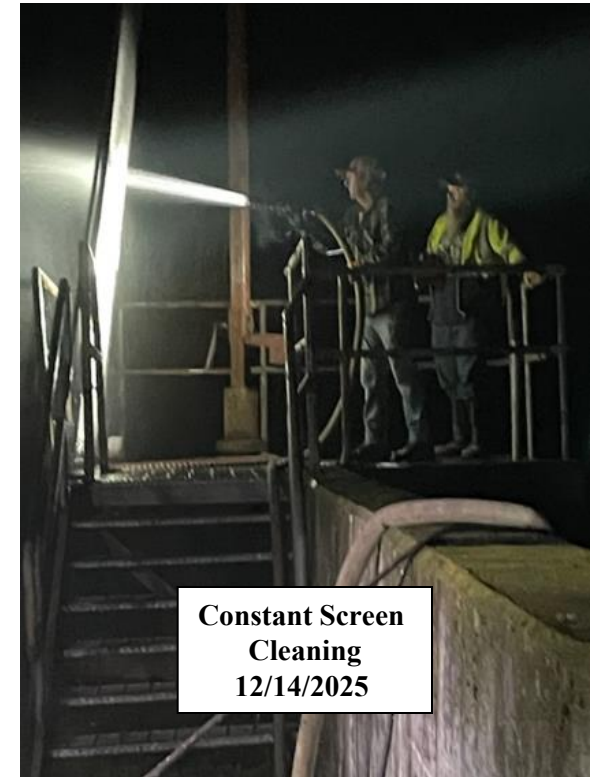
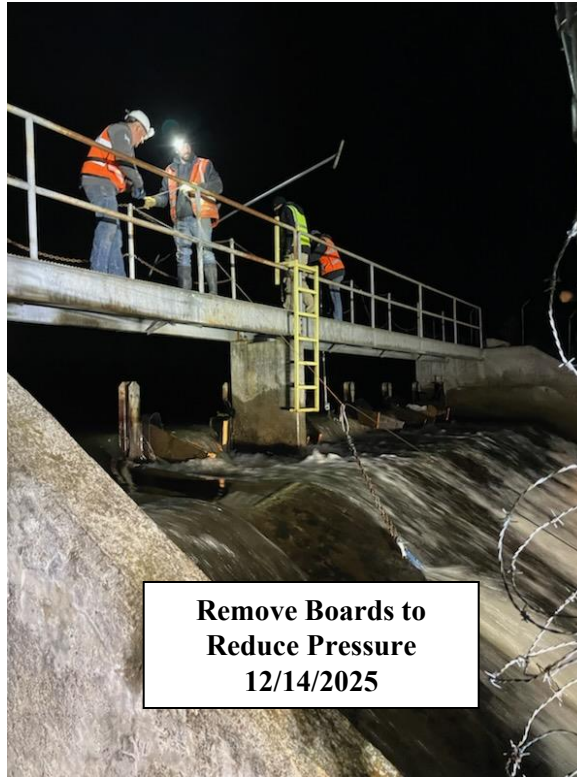
Lower Reservoir Northern Retaining Wall



Lower Reservoir Spillway



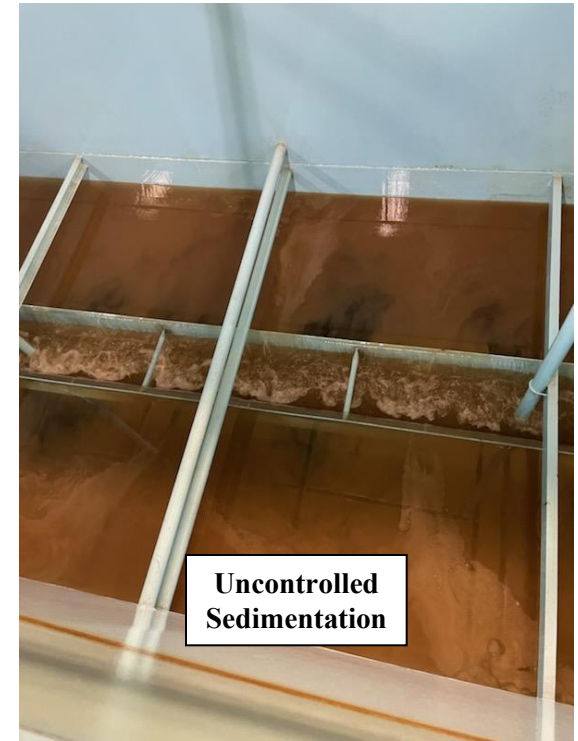
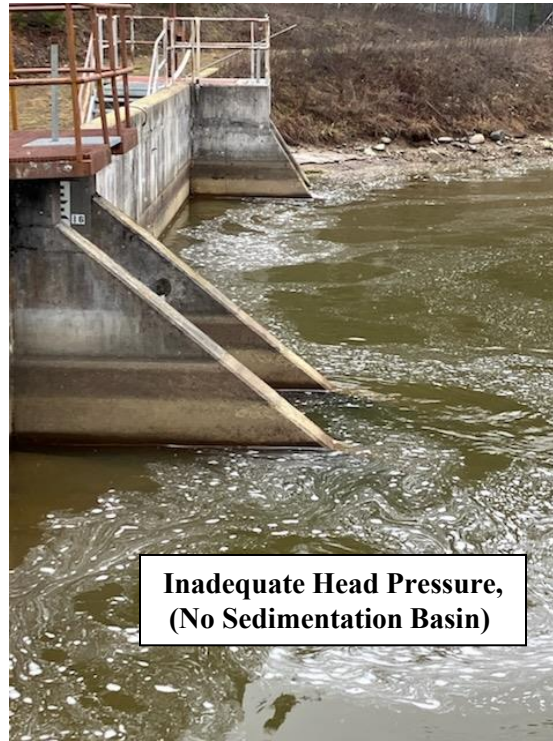
Emergency Protective Measures



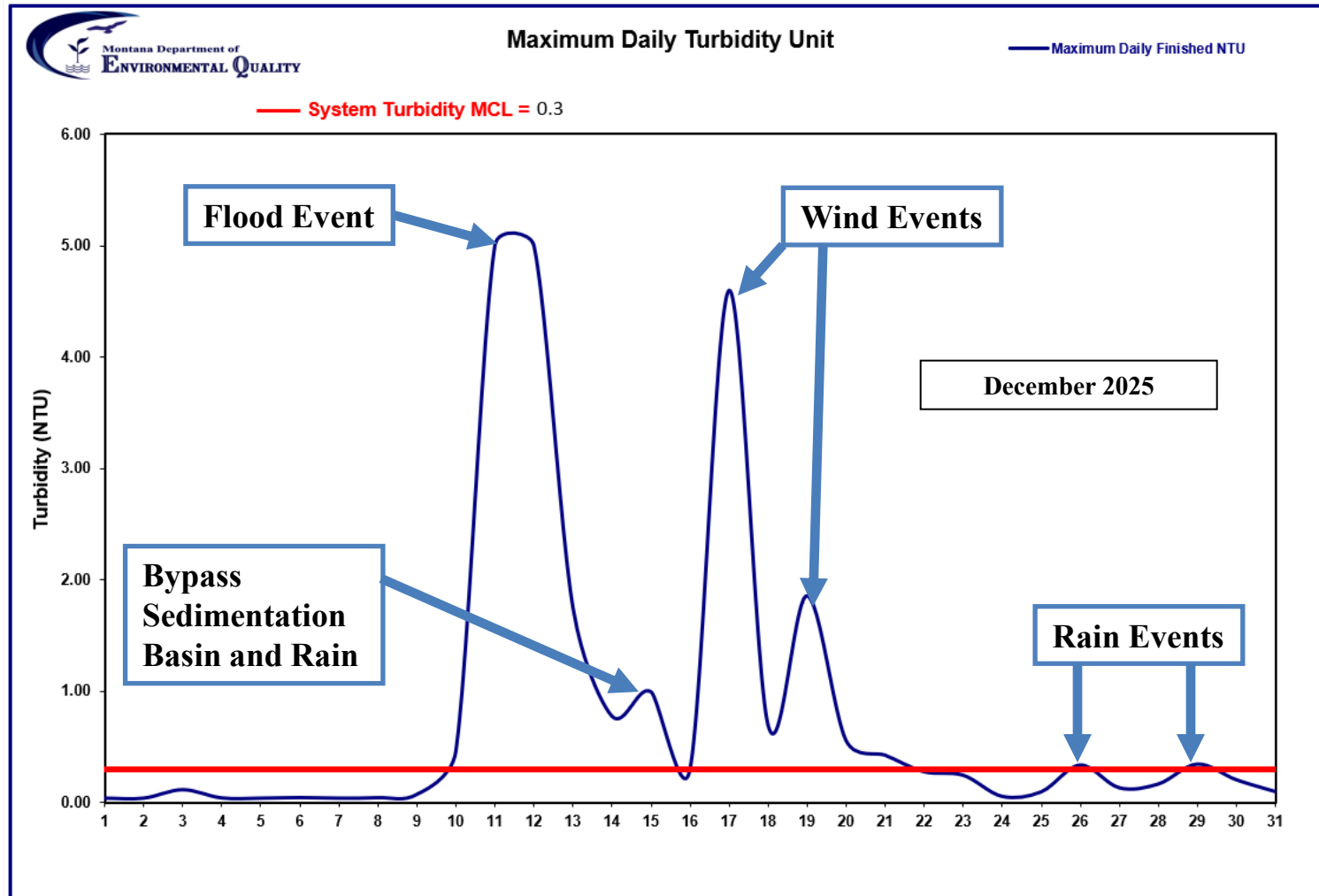
Emergency Protective Measures



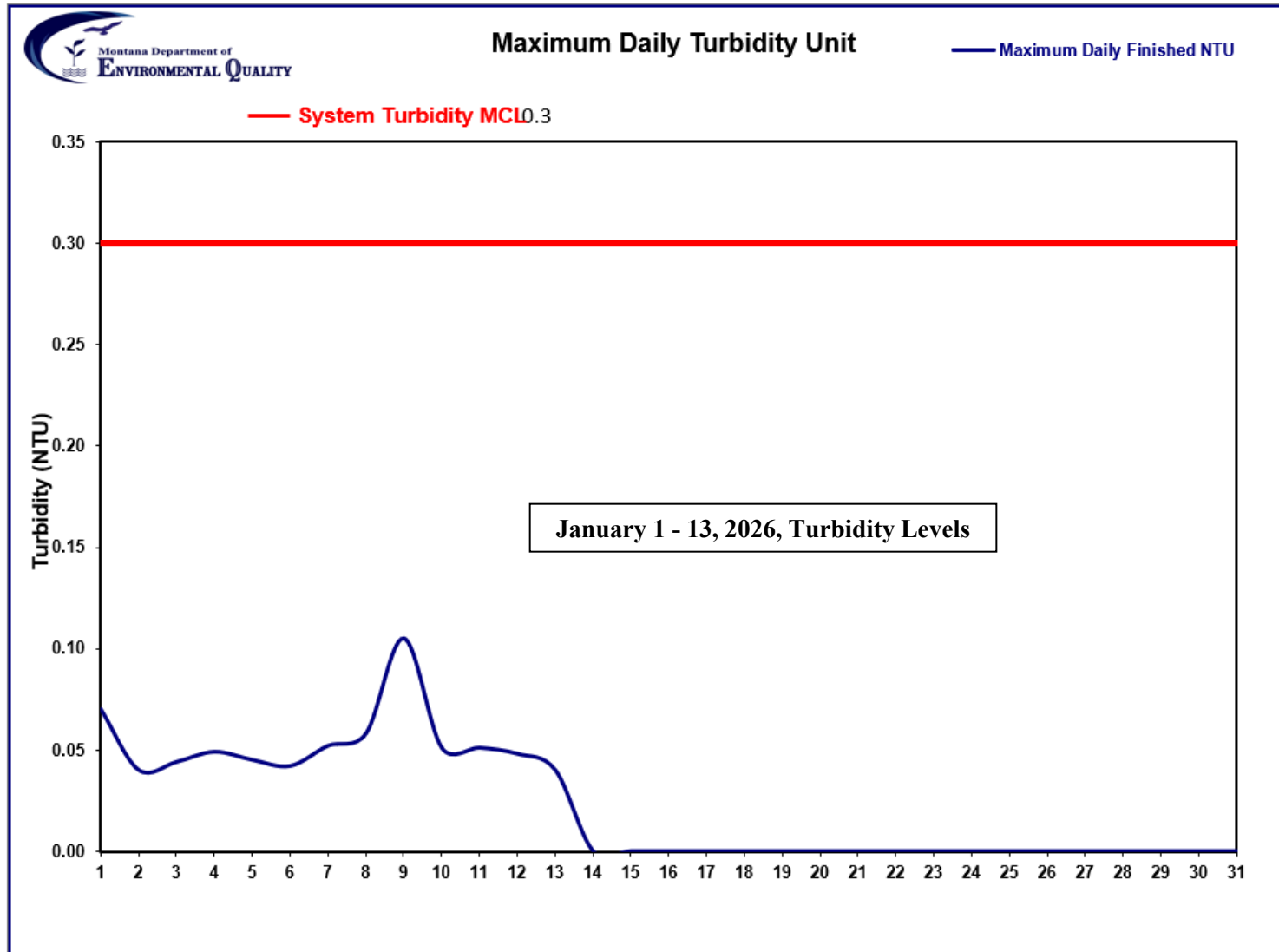
Emergency Protective Measures Negative Effects



Emergency Protective Measures Negative Effects



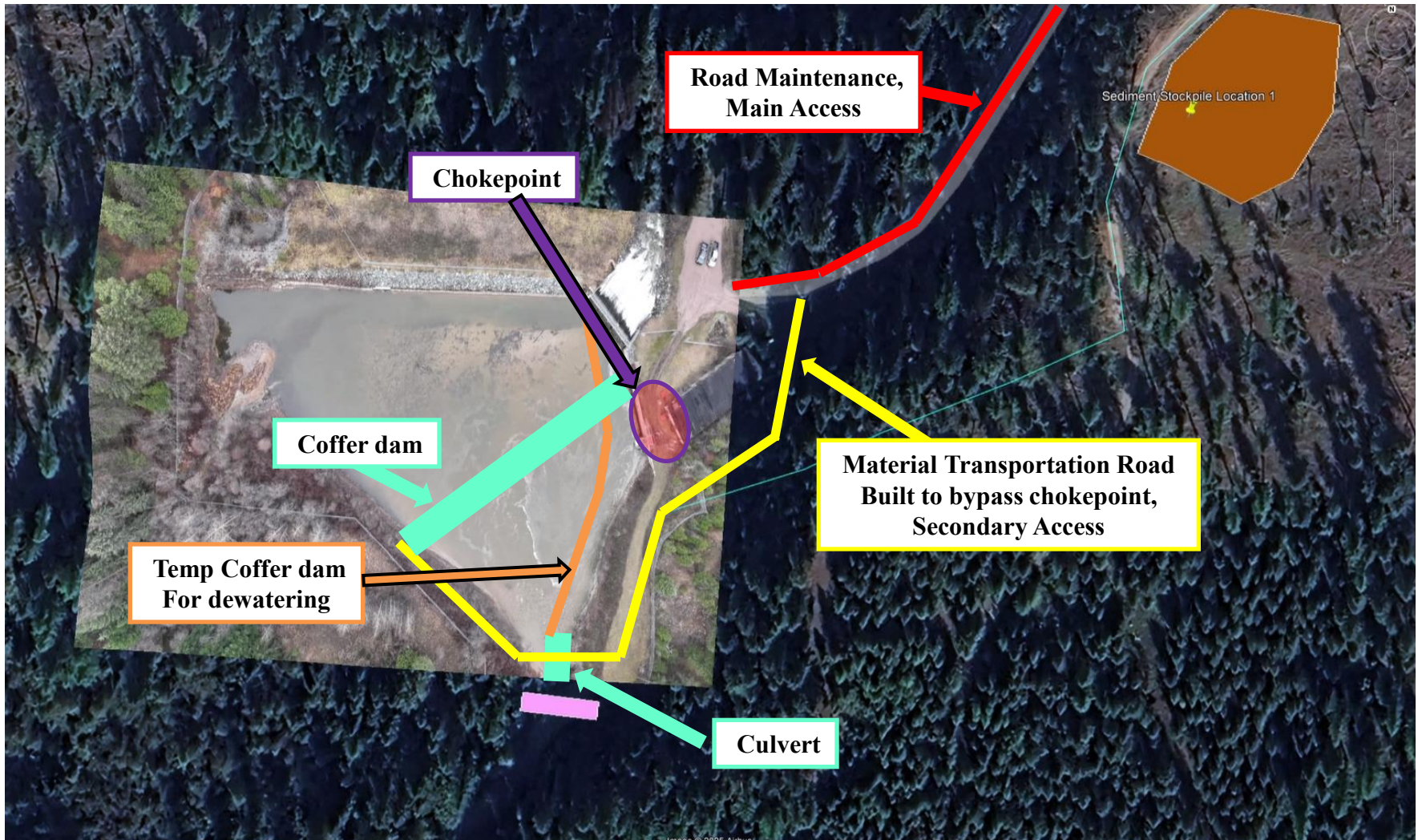
Emergency Protective Measures Solutions/Actions



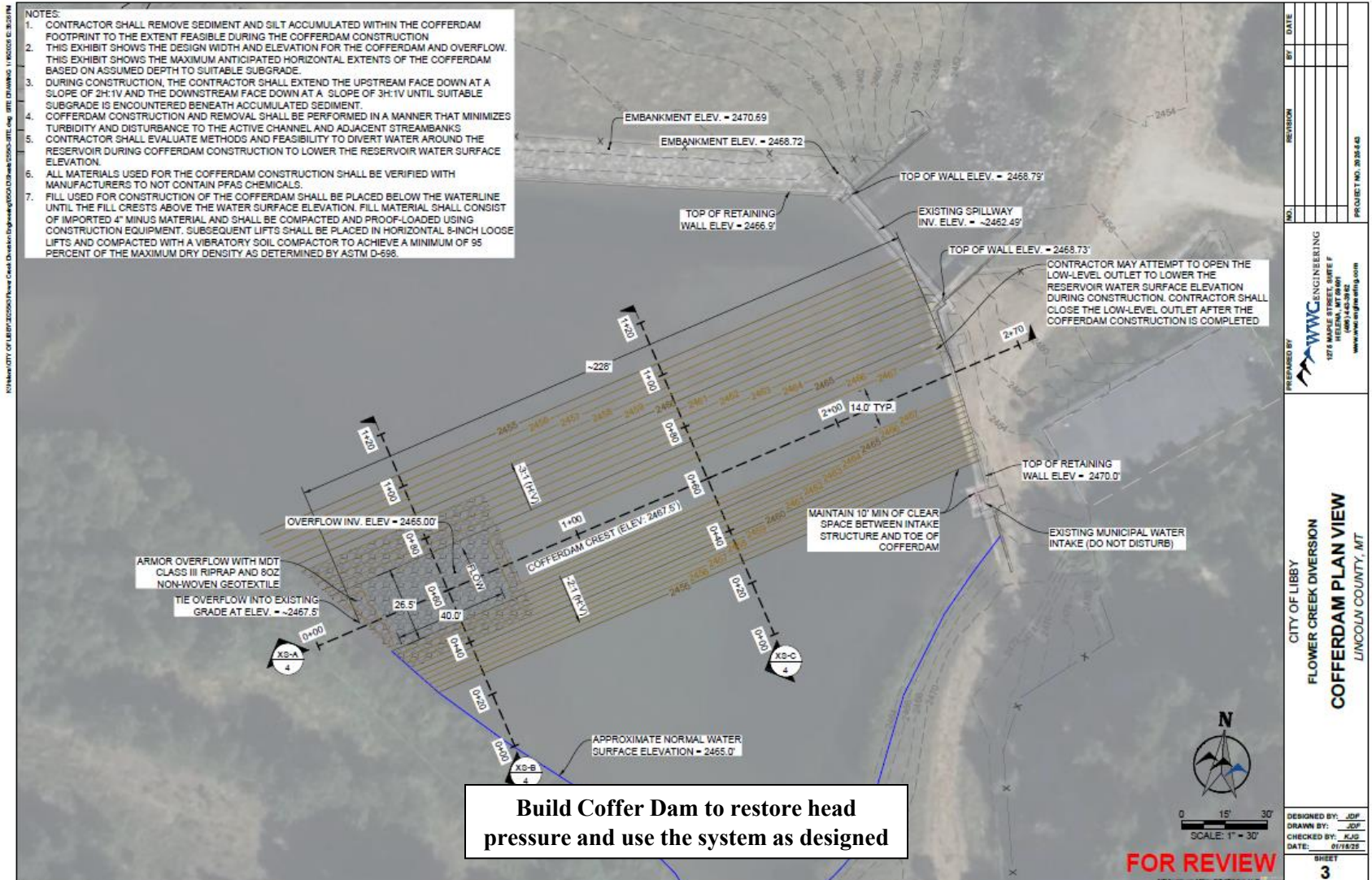
Emergency Protective Measures Solutions/Actions



Emergency Protective Measures Solutions/Actions



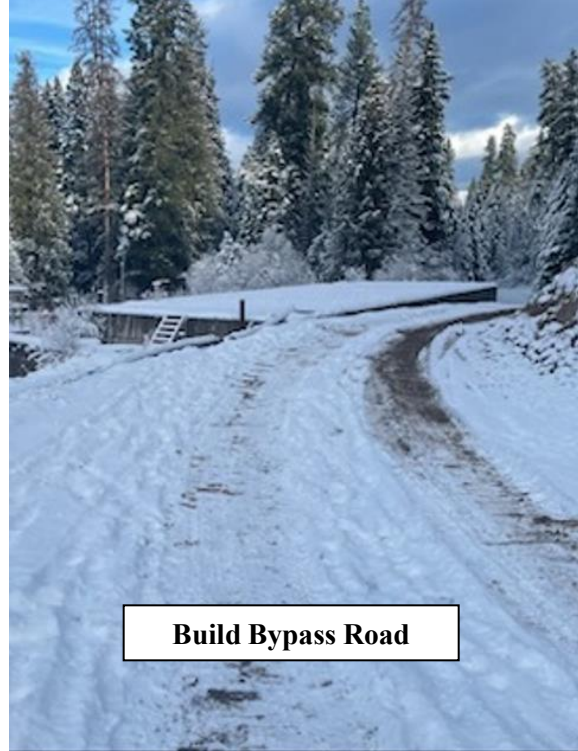
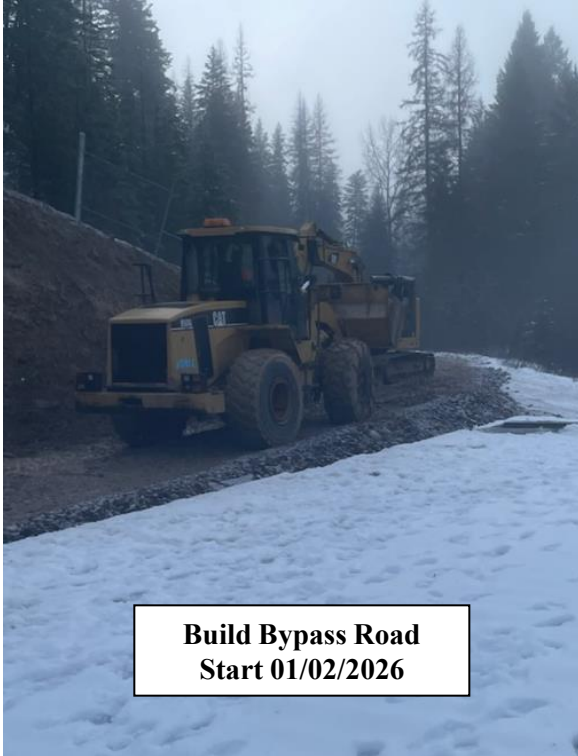
Emergency Protective Measures Solutions/Actions



Emergency Protective Measures Solutions/Actions



Emergency Protective Measures Solutions/Actions



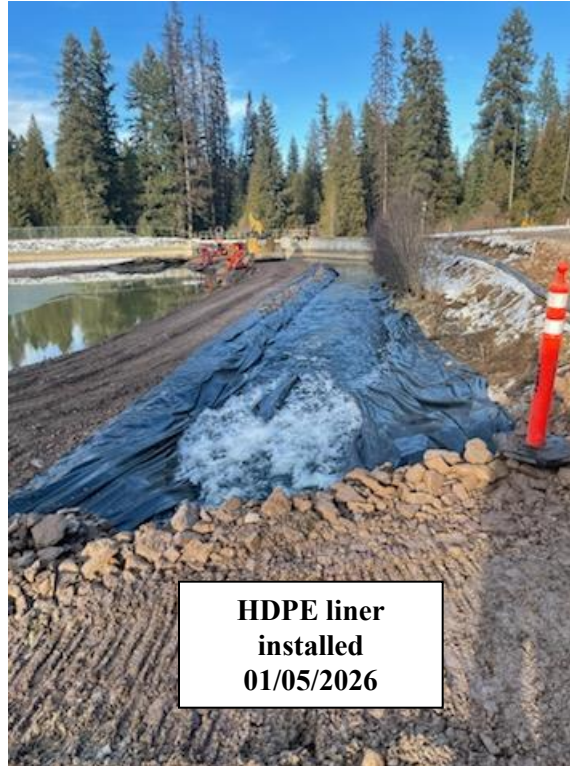
Emergency Protective Measures Solutions/Actions



Emergency Protective Measures Solutions/Actions



Emergency Protective Measures Solutions/Actions



Emergency Protective Measures Solutions/Actions



Emergency Protective Measures Solutions/Actions



Emergency Protective Measures Solutions/Actions



Still removing
sedimentation
01/23/2026

Sediment removed

Emergency Protective Measures Solutions/Actions

Upcoming Actions

Build coffer dam

**Inspect
Northern wall**

Remove Bypass