



CERTIFICATE OF SURVEY
BOUNDARY LINE ADJUSTMENT

MINERAL SURVEYS 6710, 6711, 6712, 6713, 6714, 6715, 6717, & 6718
in UNSURVEYED SECTIONS 1 & 12, T.26N., R.31W., P.M.MT.
FOR: TUNGSTEN HOLDINGS DATE: DECEMBER, 2025



LEGAL DESCRIPTION: PARCEL A

A tract of land, lying south from Libby, Montana, Lincoln County, within unsurveyed Section 1, T.26N., R.31W., P.M.MT. and more particularly described as follows:
Commencing at Corner 2, MS 6718, a 3.25 inch diameter USFS aluminum monument, and the TRUE POINT OF BEGINNING; Thence along the west boundary of MS 6718, S22°37'11"E, 647.63 feet to Corner 3, MS 6718, a 3.25 inch diameter USFS aluminum monument; Thence along the south boundary of MS 6718, S86°39'41"E, 398.43 feet to a 5/8 inch diameter rebar with blue plastic cap marked SANDERSON, 70400LS; Thence N23°04'43"W, 782.24 feet to a 5/8 inch diameter rebar with blue plastic cap marked SANDERSON, 70400LS lying on the north boundary of MS 6718; Thence along said north boundary S73°50'00"W, 354.21 feet to Corner 2, MS 6718, a 3.25 inch diameter USFS aluminum monument, and the TRUE POINT OF BEGINNING, containing 5.82 acres. Subject to a 60 foot wide access easement, and together with all other appurtenant easements of record.

LEGAL DESCRIPTION: PARCEL B

A tract of land, lying south from Libby, Montana, Lincoln County, within unsurveyed Section 1, T.26N., R.31W., P.M.MT. and more particularly described as follows:
Commencing at Corner 3, MS 6717, a 3.25 inch diameter USFS aluminum monument lying on the east boundary of MS 6718, and the TRUE POINT OF BEGINNING; Thence along the east boundary of MS 6718, N23°24'00"W, 49.99 feet to Corner 1, MS 6718, a 16 inch diameter larch tree; Thence along the north boundary of MS 6718, S73°50'00"W, 354.21 feet to a 5/8 inch diameter rebar with blue plastic cap marked SANDERSON, 70400LS; Thence S23°04'43"E, 782.24 feet to a 5/8 inch diameter rebar with blue plastic cap marked SANDERSON, 70400LS lying on the south boundary of MS 6718; Thence along said south boundary S86°39'41"W, 398.43 feet to Corner 4, MS 6717, a PK nail set in stone; Thence along the west boundary of MS 6717, N23°24'11"W, 866.90 feet to Corner 3, MS 6717, a 3.25 inch diameter USFS aluminum monument, and the TRUE POINT OF BEGINNING, containing 6.90 acres. Subject to a 60 foot wide access easement, and together with all other appurtenant easements of record.

LEGAL DESCRIPTION: PARCEL C

A tract of land, lying south from Libby, Montana, Lincoln County, within unsurveyed Section 1, T.26N., R.31W., P.M.MT. and more particularly described as follows:
Commencing at Corner 3, MS 6717, a 3.25 inch diameter USFS aluminum monument lying on the east boundary of MS 6718, and the TRUE POINT OF BEGINNING; Thence along the west boundary of MS 6717, S23°24'11"E, 866.90 feet to Corner 2, MS 6710, a PK nail set in stone; Thence along the northwest boundary of MS 6710, N39°55'50"E, 410.28 feet to a 5/8 inch diameter rebar with blue plastic cap marked SANDERSON, 70400LS; Thence N32°10'54"W, 740.75 feet to a 5/8 inch diameter rebar with blue plastic cap marked SANDERSON, 70400LS lying on the north boundary of MS 6717; Thence along said north boundary, S55°35'41"W, 258.33 feet to Corner 3, MS 6717, a 3.25 inch diameter USFS aluminum monument, and the TRUE POINT OF BEGINNING, containing 5.84 acres. Subject to a 60 foot wide access easement, and together with all other appurtenant easements of record.

LEGAL DESCRIPTION: PARCEL D

A tract of land, lying south from Libby, Montana, Lincoln County, within unsurveyed Section 1, T.26N., R.31W., P.M.MT. and more particularly described as follows:
Commencing at Corner 2, MS 6717, a 3.25 inch diameter USFS aluminum monument; Thence along the north boundary of MS 6717, S55°35'41"W, 404.56 feet to a 5/8 inch diameter rebar with blue plastic cap marked SANDERSON, 70400LS, and the TRUE POINT OF BEGINNING; Thence continuing along said north boundary S55°35'41"W, 258.33 feet to a 5/8 inch diameter rebar with blue plastic cap marked SANDERSON, 70400LS; Thence S32°10'54"E, 740.75 feet to a 5/8 inch diameter rebar with blue plastic cap marked SANDERSON, 70400LS lying on the northwest boundary of MS 6710; Thence along said northwest boundary, N39°55'50"E, 410.28 feet to a 5/8 inch diameter rebar with blue plastic cap marked SANDERSON, 70400LS; Thence N44°08'18"W, 638.61 feet to a 5/8 inch diameter rebar with blue plastic cap marked SANDERSON, 70400LS lying on the north boundary of MS 6717, and the TRUE POINT OF BEGINNING, containing 5.19 acres. Subject to a 60 foot wide access easement, and together with all other appurtenant easements of record.

LEGAL DESCRIPTION: PARCEL E

A tract of land, lying south from Libby, Montana, Lincoln County, within unsurveyed Section 1, T.26N., R.31W., P.M.MT. and more particularly described as follows:
Commencing at Corner 2, MS 6717, a 3.25 inch diameter USFS aluminum monument; Thence along the north boundary of MS 6717, S55°35'41"W, 404.56 feet to a 5/8 inch diameter rebar with blue plastic cap marked SANDERSON, 70400LS, and the TRUE POINT OF BEGINNING; Thence S44°08'18"E, 638.61 feet to a 5/8 inch diameter rebar with blue plastic cap marked SANDERSON, 70400LS lying on the northwest boundary of MS 6710; Thence along said northwest boundary, N39°55'50"E, 410.28 feet to a 5/8 inch diameter rebar with blue plastic cap marked SANDERSON, 70400LS; Thence N59°39'38"W, 573.46 feet to a 5/8 inch diameter rebar with blue plastic cap marked SANDERSON, 70400LS lying on the north boundary of MS 6717; Thence along said north boundary of MS 6717, S55°35'41"W, 258.33 feet to a 5/8 inch diameter rebar with blue plastic cap marked SANDERSON, 70400LS, and the TRUE POINT OF BEGINNING, containing 4.53 acres. Subject to a 60 foot wide access easement, and together with all other appurtenant easements of record.

LEGAL DESCRIPTION: PARCEL F

A tract of land, lying south from Libby, Montana, Lincoln County, within unsurveyed Section 1, T.26N., R.31W., P.M.MT. and more particularly described as follows:
Commencing at Corner 1, MS 6710, a 3.25 inch diameter USFS aluminum monument, and the TRUE POINT OF BEGINNING; Thence along the east boundary of MS 6717, N22°11'57"E, 254.63 feet to Corner 1, MS 6717, a 3.25 inch diameter USFS aluminum monument; Thence along the north boundary of MS 6717, S85°00'12"W, 633.35 feet to Corner 2, MS 6717, a 3.25 inch diameter USFS aluminum monument; Thence continuing along said north boundary, S55°35'41"W, 146.23 feet to a 5/8 inch diameter rebar with blue plastic cap marked SANDERSON, 70400LS; Thence S59°39'38"E, 573.46 feet to a 5/8 inch diameter rebar with blue plastic cap marked SANDERSON, 70400LS lying on the northwest boundary of MS 6710; Thence along said northwest boundary of MS 6710, N39°55'50"E, 250.00 feet to Corner 1, MS 6710, a 3.25 inch diameter USFS aluminum monument, and the TRUE POINT OF BEGINNING, containing 4.03 acres. Subject to a 60 foot wide access easement, and together with all other appurtenant easements of record.

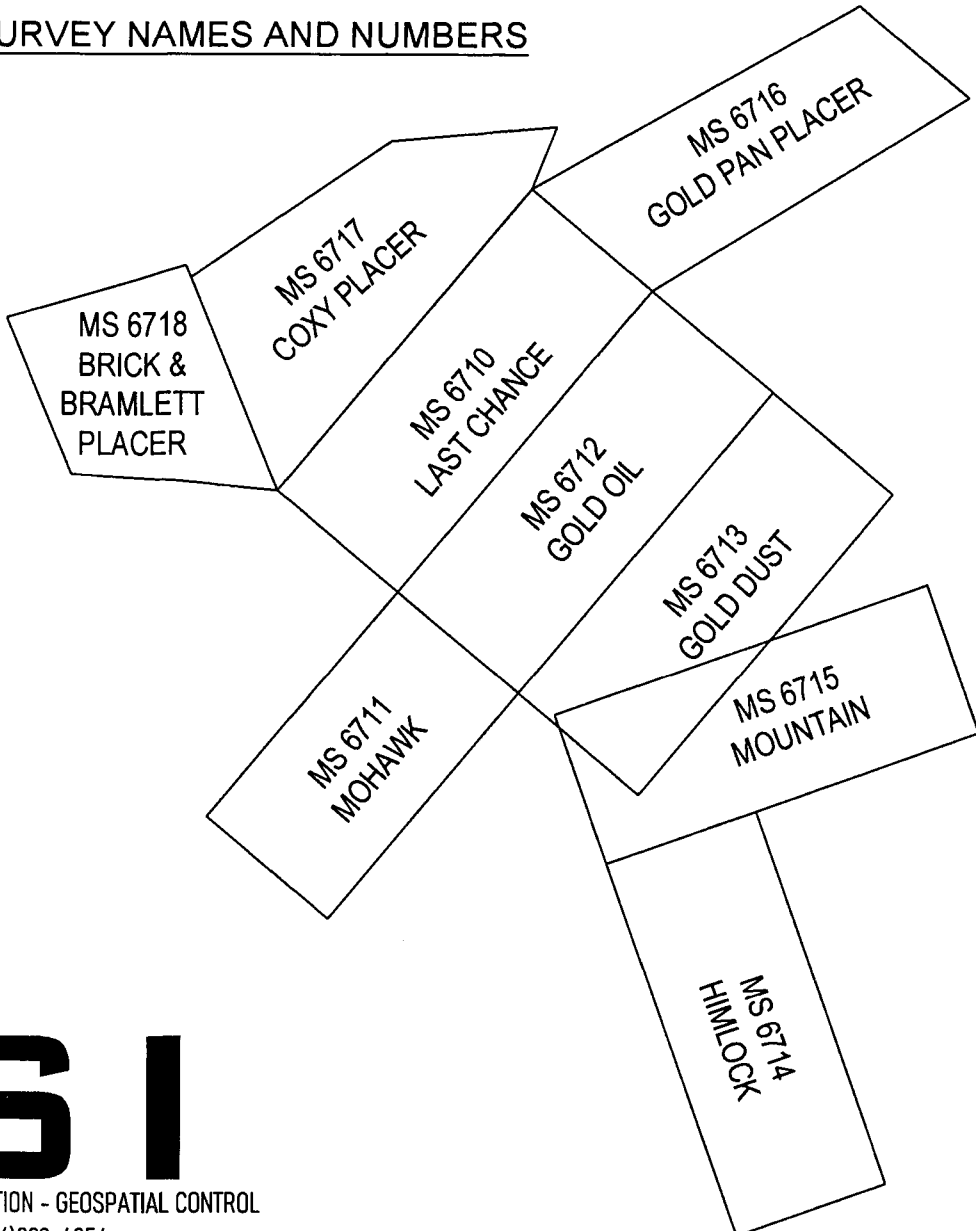
LEGAL DESCRIPTION: PARCEL G

A tract of land, lying south from Libby, Montana, Lincoln County, within unsurveyed Sections 1 & 12, T.26N., R.31W., P.M.MT. and more particularly described as follows:
Commencing at Corner 5, MS 6717, a 3.25 inch diameter USFS aluminum monument, and the TRUE POINT OF BEGINNING; Thence along the southeast boundary of MS 6717, S39°55'50"W, 1480.83 feet to Corner 4, MS 6717, a PK nail set in stone; Thence along the southwest boundary of MS 6710, S48°10'09"E, 596.28 feet to Corner 2, MS 6712, a 2 inch diameter aluminum cap marked SANDERSON 70400LS; Thence along the northwest boundary of MS 6712, N40°03'17"E, 1496.82 feet to Corner 1, MS 6712, a 2 inch diameter aluminum cap marked SANDERSON 70400LS; Thence along the northeast boundary of MS 6710, N49°42'29"W, 599.21 feet to Corner 5, MS 6717, a 3.25 inch diameter USFS aluminum monument, and the TRUE POINT OF BEGINNING, containing 20.42 acres. Subject to a 60 foot wide access easement, and together with all other appurtenant easements of record.

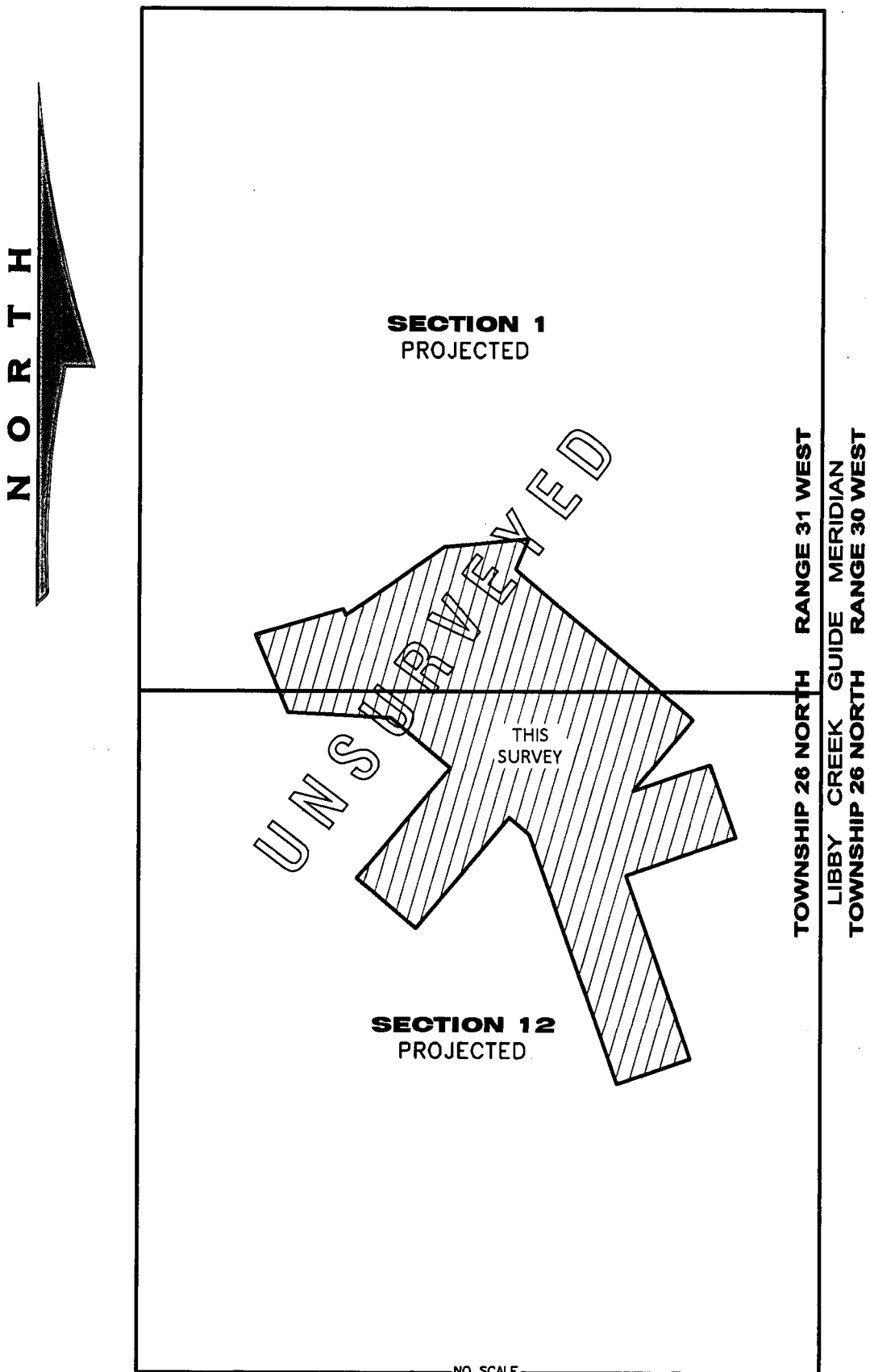
LEGAL DESCRIPTION: PARCEL H

A tract of land, lying south from Libby, Montana, Lincoln County, within unsurveyed Sections 1 & 12, T.26N., R.31W., P.M.MT. and more particularly described as follows:
Commencing at Corner 1, MS 6712, a 2 inch diameter aluminum cap marked SANDERSON 70400LS, and the TRUE POINT OF BEGINNING; Thence along the northwest boundary of MS 6712, S40°03'17"W, 1496.82 feet to Corner 1, MS 6711, a 2 inch diameter aluminum cap marked SANDERSON, 70400LS; Thence along the northwest boundary of MS 6711, S40°03'17"W, 1119.62 feet to Corner 2, MS 6711, an unmarked computed point; Thence along the southwest boundary of MS 6711, S49°56'43"E, 598.73 feet to Corner 3, MS 6711, an unmarked computed point; Thence along the southeast boundary of MS 6711, N40°03'17"E, 1119.62 feet to Corner 2, MS 6713, an unmarked computed point; Thence along the southwest boundary of MS 6713, S49°56'43"E, 205.96 feet to an unmarked computed point lying at the intersection of said southwest boundary of MS 6713 and the west boundary of MS 6715; Thence along said west boundary of MS 6715, S19°26'43"E, 544.84 feet to Corner 2, MS 6714, an unmarked computed point; Thence along the west boundary of MS 6714, S19°26'43"E, 1496.82 feet to Corner 3, MS 6714, an unmarked computed point; Thence along the south boundary of MS 6714, N70°33'17"E, 598.73 feet to Corner 4, MS 6714, an unmarked computed point; Thence along the east boundary of MS 6715, N19°26'43"W, 598.73 feet to Corner 1, MS 6715, an unmarked computed point; Thence along the north boundary of MS 6715, S70°33'17"W, 631.48 feet to an unmarked computed point lying at the intersection of said north boundary of MS 6715 and the southeast boundary of MS 6713; Thence along said southeast boundary of MS 6713, N40°03'17"E, 723.87 feet to Corner 4, MS 6713, an unmarked computed point; Thence along the northeast boundary of MS 6713, N49°56'43"W, 598.73 feet to corner 4, MS 6712, an unmarked computed point; Thence along the northeast boundary of MS 6712, N49°56'43"W, 598.73 feet to Corner 1, MS 6712, a 2 inch diameter aluminum cap marked SANDERSON 70400LS, and the TRUE POINT OF BEGINNING, containing ±93.66 acres. Subject to and together with all other appurtenant easements of record.

1902 MINERAL SURVEY NAMES AND NUMBERS



VICINITY MAP



CERTIFICATE OF SURVEY No. S195R3