



LINCOLN COUNTY MONTANA

317553 BOOK: PF PERM/FILES PAGE: 15446 Pages: 5

STATE OF MONTANA LINCOLN COUNTY

RECORDED: 09/24/2025 11:20 KOI: RESOLUTION

CORRINA BROWN CLERK AND RECORDER

FEE: \$0.00 BY: Deisha Starkson deputy

FOR: LINCOLN COUNTY BOARD OF COMMISSIONERS 512 CALIFORNIA AVE,

RESOLUTION 2025-33

A Resolution Altering the Boundaries of the Eureka Fire Service Area

THE BOARD OF COUNTY COMMISSIONERS FOR LINCOLN COUNTY, MONTANA FINDS:

WHEREAS, the Lincoln County Board of Commissioners is authorized under § 7-33-2401, Montana Code Annotated (MCA), to establish, alter, and dissolve fire service areas for the purpose of providing fire protection services in unincorporated areas of the county not part of a rural fire district; and

WHEREAS, the Eureka Fire Service Area (EFSA) was duly established by Resolution 207 on August 1, 1990, to provide fire protection services to designated properties within Lincoln County; and

WHEREAS, based on updated mapping, property access routes and recommendations from fire officials and the EFSA Board, it has been determined that certain properties should be added to the EFSA to enhance emergency response coverage and align boundaries with logical service areas; and

WHEREAS, on July 23, 2025, the Board of County Commissioners passed a Resolution of Intent (Resolution 2025-27) to alter the EFSA boundaries, as required under § 7-33-2401(2), MCA; and

WHEREAS, notice was published in accordance with § 7-1-2121, MCA, in local newspapers of record, and was also posted on the county bulletin boards and website, stating the purpose, location, and schedule of the public hearings; and

WHEREAS, public hearings were held on **August 20, 2025**, and **September 17, 2025**, at the North County Annex in Eureka, Montana, to receive written and oral public comment regarding the proposed boundary alterations; and

WHEREAS, the statutory protest period has expired and written protests were not received from owners of more than 50% of the properties within the proposed boundary addition, allowing the Board to proceed with the alteration.

NOW, THEREFORE, BE IT RESOLVED:

The boundaries of the Eureka Fire Service Area (EFSA) are hereby altered to include the parcels defined within this resolution. These parcels are depicted on the boundary maps included on pages 3–5 of this resolution as Upper Pinkham Creek Area, Douglas Hill Road Area and Phils Lake Area.



LINCOLN COUNTY MONTANA

The boundary change shall be effective immediately upon adoption of this resolution and shall be reflected in all administrative, assessment, and emergency service records maintained by the Eureka Fire Service Area and Lincoln County.

THE BOARD FURTHER RESOLVES:

1. If a provision of this resolution conflicts with a provision of a previously adopted resolution, this resolution will prevail.
2. This resolution and its various sections, clauses and paragraphs are severable. If any part, sentence, clause, or phrase is adjudged to be unconstitutional or invalid, the remainder of the resolution will not be affected.
3. This resolution will be effective immediately upon adoption, in accordance with § 7-5-123, MCA.
4. This Board directs that this resolution be entered into the minutes and signed by the Chair of the Board in accordance with § 7-5-121, MCA.

END OF RESOLUTION

Approved as to Form:

A handwritten signature in blue ink, appearing to read "Marcia Boris".

Marcia Boris, County Attorney

Date presented to the Board September 24, 2025 Approved ☒ Disapproved ☐ Amended ☐

Adopted this 24th day of September, 2025.

LINCOLN COUNTY BOARD OF COMMISSIONERS

A handwritten signature in blue ink, appearing to read "Brent Teske".

Brent Teske, Chair

ATTEST:

A handwritten signature in blue ink, appearing to read "Corrina Brown".

Corrina Brown, Clerk of the Board

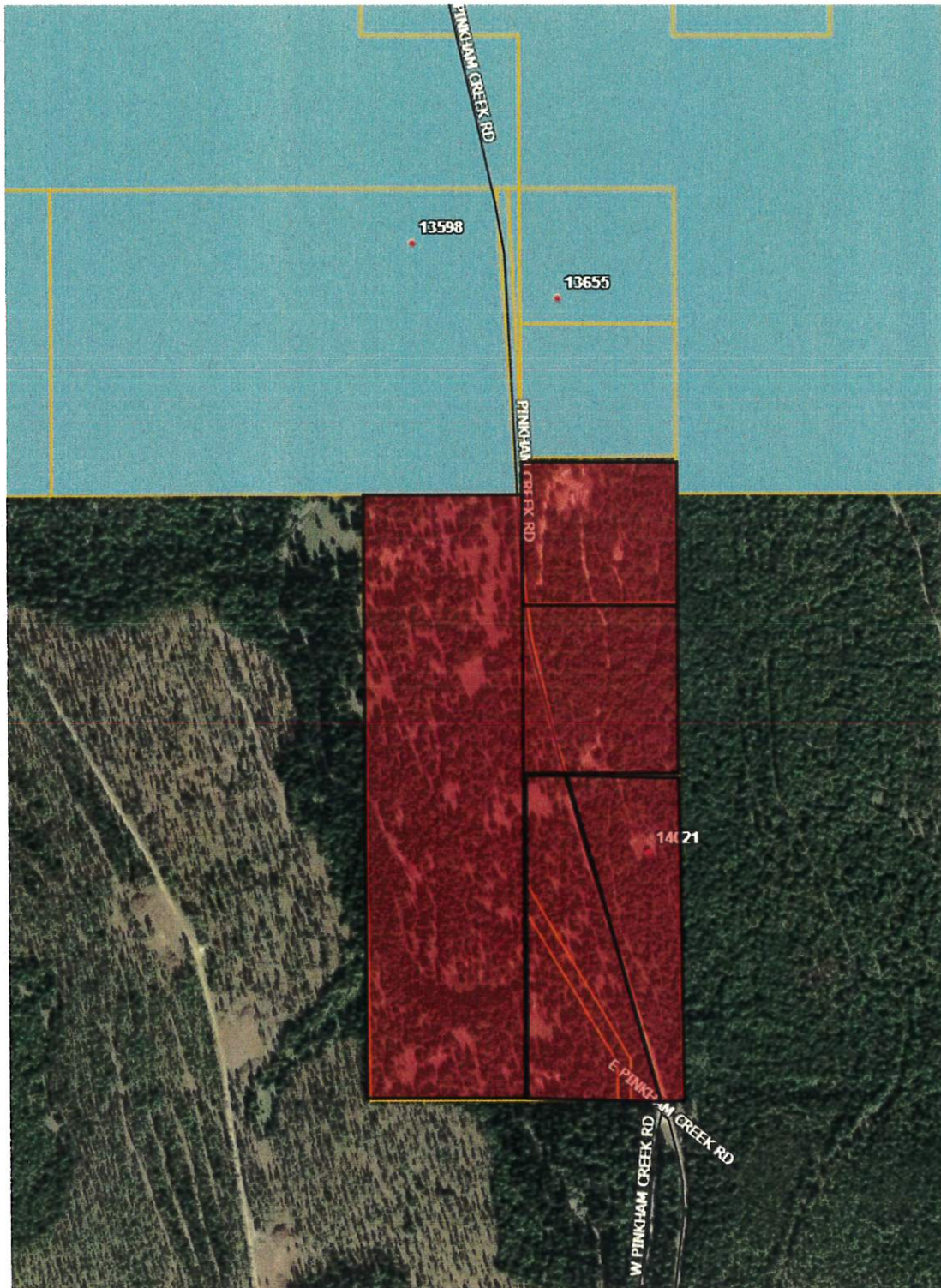


LINCOLN COUNTY MONTANA

UPPER PINKHAM CREEK AREA



Proposed EFSA
addition areas (5)



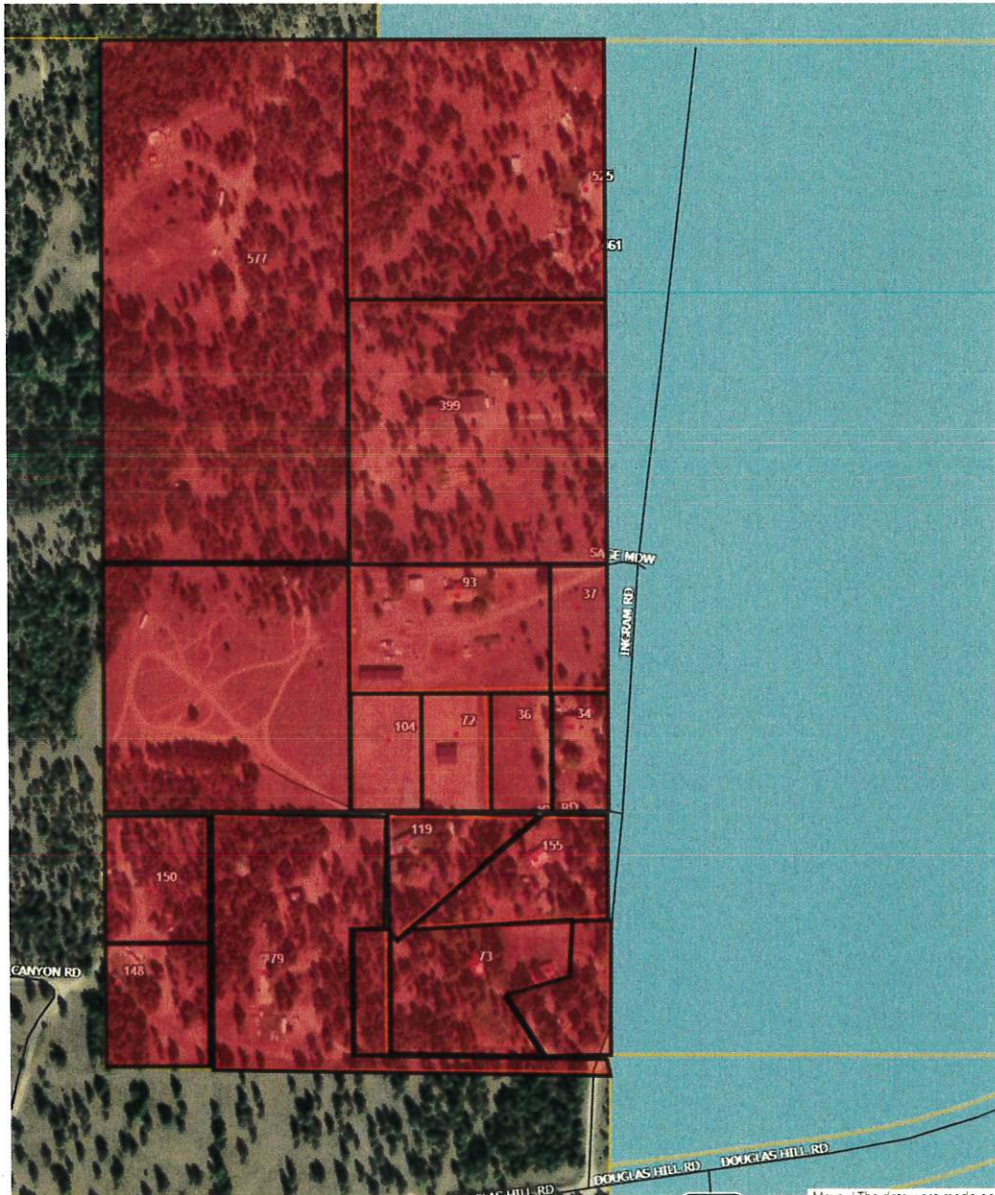


LINCOLN COUNTY MONTANA

DOUGLAS HILL ROAD AREA



Proposed EFSA
addition areas (18)





LINCOLN COUNTY MONTANA

PHILS LAKE AREA



Proposed EFSA
addition areas (7)

