



LINCOLN COUNTY MONTANA

316580 BOOK: PF PERM/FILES PAGE: 15424 Pages: 5

STATE OF MONTANA LINCOLN COUNTY

RECORDED: 07/23/2025 11:49 KOI: RESOLUTION

CORRINA BROWN CLERK AND RECORDER

FEE: \$0.00 BY: Debra Storkson deputy

FOR: LINCOLN COUNTY BOARD OF COMMISSIONERS 512 CALIFORNIA AVE,

RESOLUTION 2025-27

A Resolution of Intent to Alter the Boundaries of the Eureka Fire Service Area

THE BOARD OF COUNTY COMMISSIONERS FOR LINCOLN COUNTY, MONTANA FINDS:

WHEREAS, the Lincoln County Board of Commissioners is authorized under § 7-33-2401, Montana Code Annotated (MCA), to establish, alter, and dissolve fire service areas for the purpose of providing fire protection services in unincorporated areas of the county not part of a rural fire district; and

WHEREAS, the Eureka Fire Service Area (EFSA) was previously established to provide fire protection services to designated properties within Lincoln County; and

WHEREAS, based on updated mapping, property access routes, and recommendations from fire officials and the Eureka Fire Service Area Board, it has been determined that certain properties should be added to the EFSA to enhance emergency response coverage and improve logical service boundaries; and

WHEREAS, pursuant to § 7-33-2401(2), MCA, the Board of County Commissioners is required to pass a Resolution of Intent, provide public notice, and hold at least one public hearing no sooner than 30 days and no later than 90 days after passage of this resolution before finalizing any changes to fire service area boundaries; and

WHEREAS, public hearings will be held to receive input from affected property owners and members of the public concerning the proposed boundary alteration.

NOW, THEREFORE, BE IT RESOLVED:

by the Board of County Commissioners of Lincoln County, Montana, as follows:

The Board hereby declares its intent to alter the boundaries of the Eureka Fire Service Area by including additional parcels as identified in the proposed boundary map and documentation below.

Two public hearings will be held to allow for public comment on the proposed alterations:

First Hearing:

Date: August 20, 2025

Time: 11:00 AM

Location: North County Annex, 66121 Hwy 37, Eureka, MT 59917

Second Hearing:

Date: September 17, 2025

Time: 11:00 AM



LINCOLN COUNTY MONTANA

Notice of these hearings shall be published and posted in accordance with § 7-1-2121, MCA, and shall include the date, time, location, and purpose of the hearings, along with a summary of the proposed boundary changes.

At the public hearings, the Board will receive written and oral comments, including protests, as required by law. The Board may adopt a final resolution altering the EFSA boundaries no sooner than 30 days and no later than 90 days after the adoption of this Resolution of Intent. If written protests are received from the owners of more than 50% of the properties within the proposed service area, the proposed alteration will be void.

THE BOARD FURTHER RESOLVES:

1. If a provision of this resolution conflicts with a provision of a previously adopted resolution, this resolution will prevail.
2. This resolution and its various sections, clauses and paragraphs are severable. If any part, sentence, clause, or phrase is adjudged to be unconstitutional or invalid, the remainder of the resolution will not be affected.
3. This resolution will be effective immediately upon adoption, in accordance with § 7-5-123, MCA.
4. This Board directs that this resolution be entered into the minutes and signed by the Chair of the Board in accordance with § 7-5-121, MCA.

END OF RESOLUTION

Approved as to Form:

Marcia Boris, County Attorney

Date presented to the Board July 23, 2025 Approved [☒] Disapproved [☐] Amended [☐]

Adopted this 23rd day of July, 2025.

LINCOLN COUNTY BOARD OF COMMISSIONERS

Brent Teske, Chair


ATTEST:

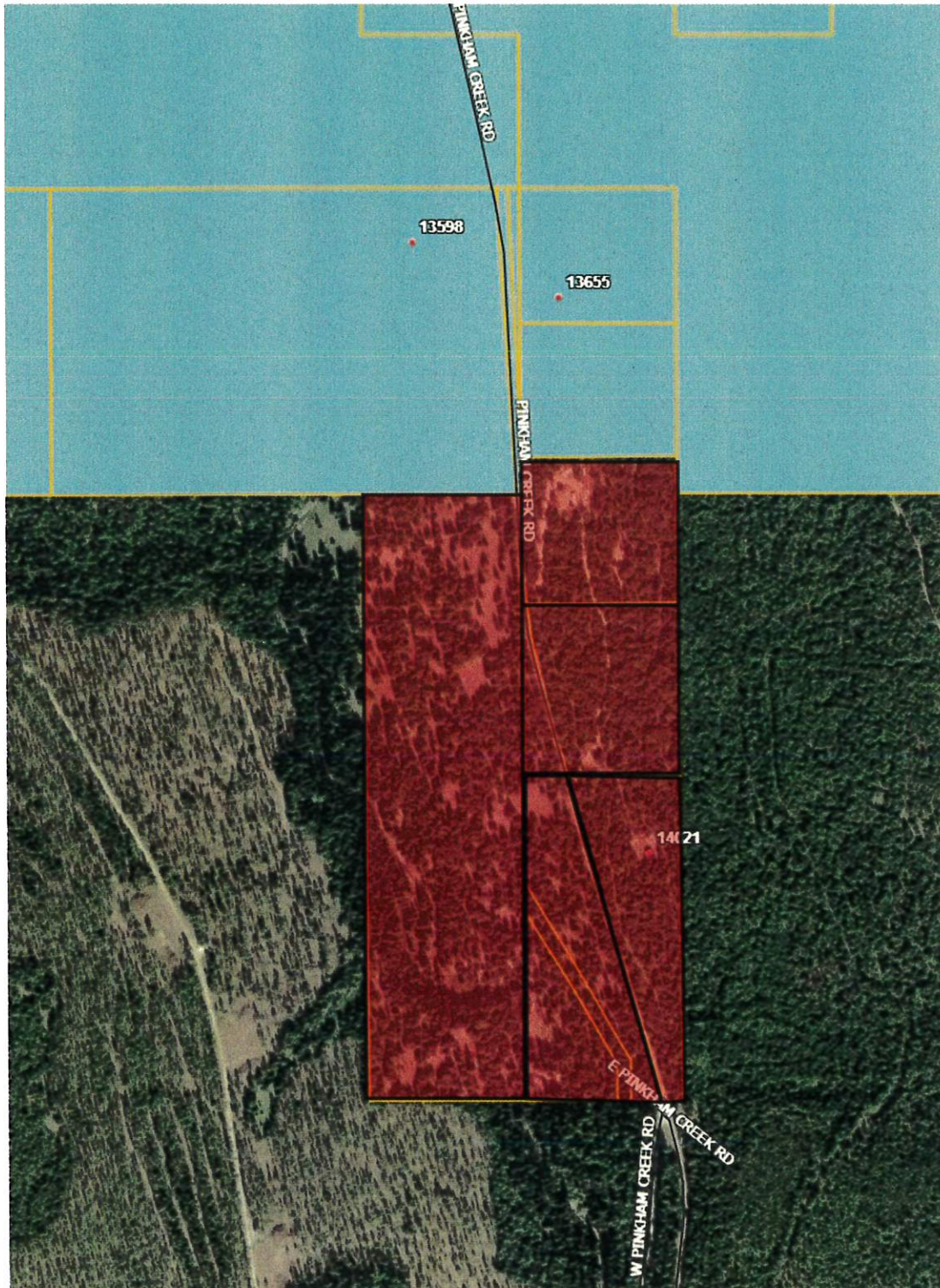
Corrina Brown, Clerk of the Board



LINCOLN COUNTY MONTANA

UPPER PINKHAM CREEK AREA

 Proposed EFSA
addition areas (5)



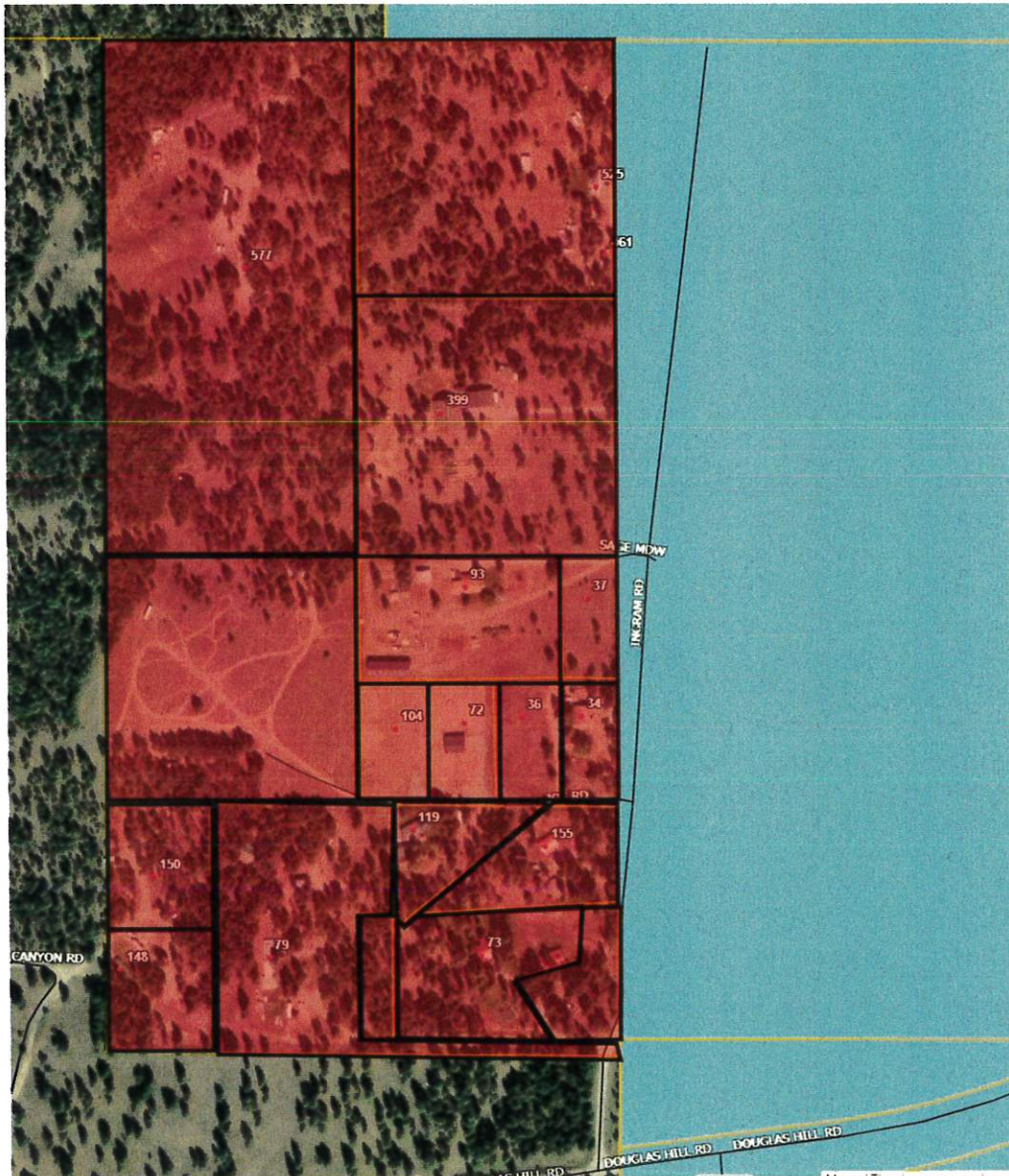


LINCOLN COUNTY MONTANA

DOUGLAS HILL ROAD AREA



Proposed EFSA
addition areas (17)





LINCOLN COUNTY MONTANA

PHILS LAKE AREA



Proposed EFSA
addition areas (7)

