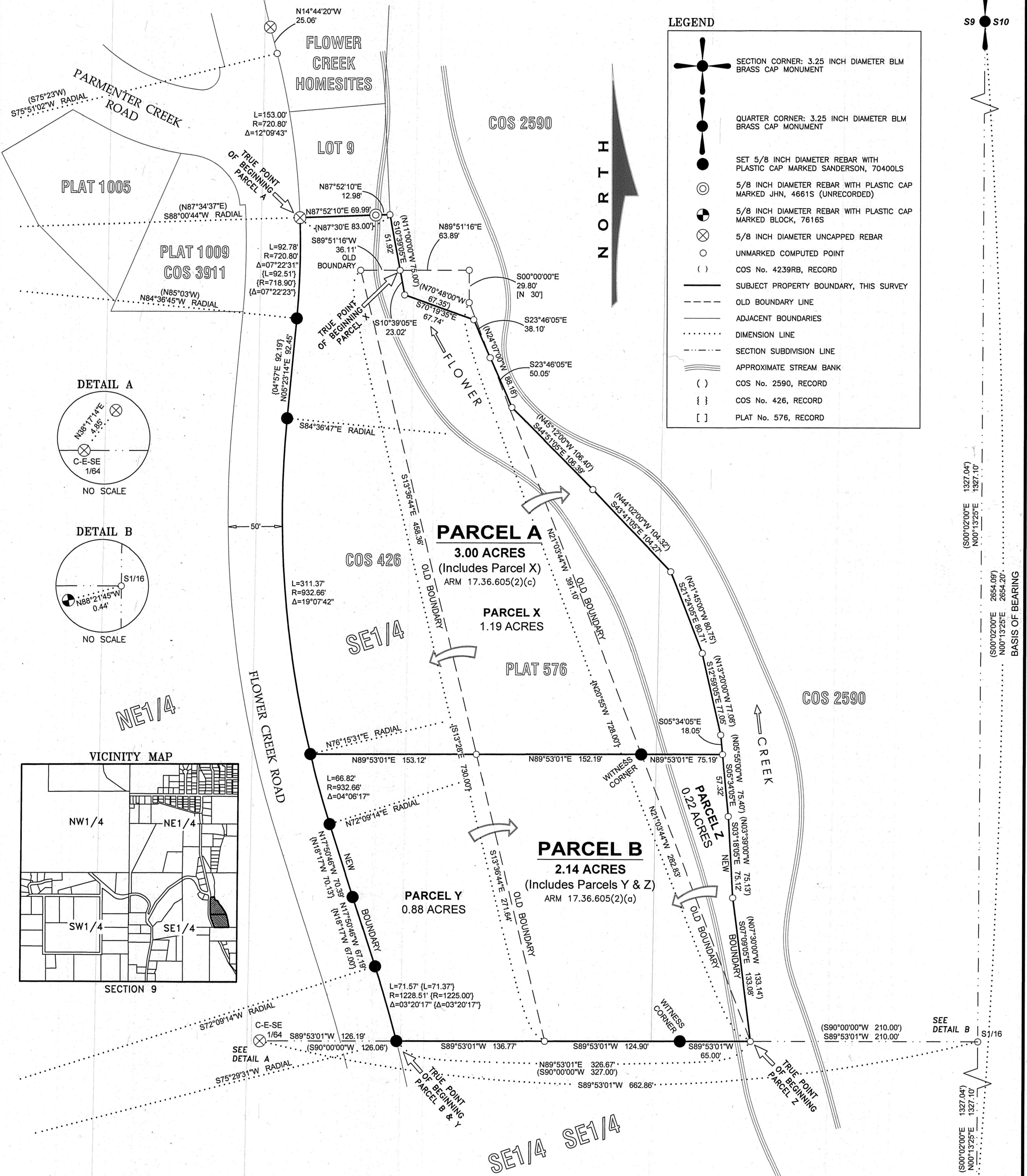


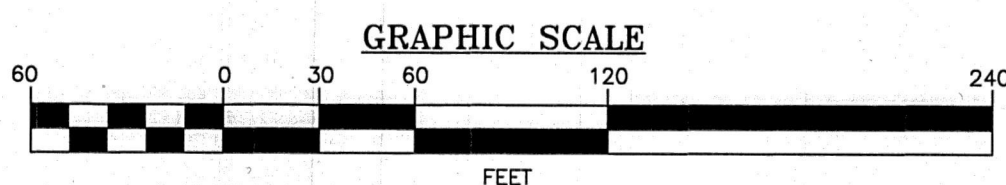
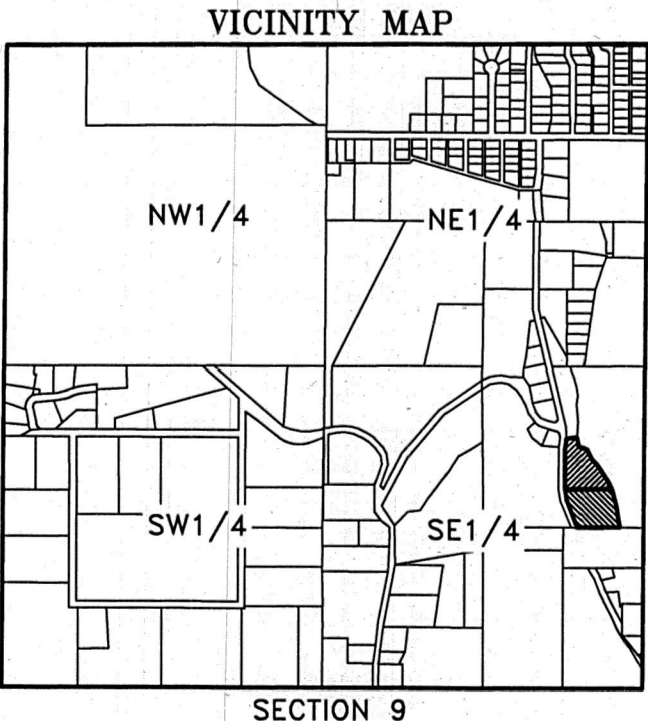
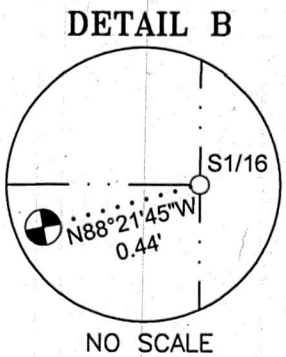
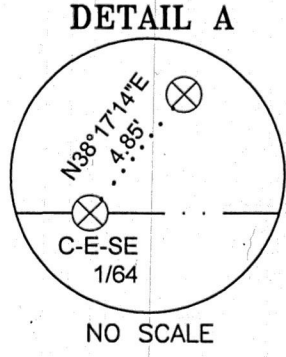
CERTIFICATE OF SURVEY

BOUNDARY LINE ADJUSTMENT

IRREGULAR PLAT No. 576 & COS No. 426
 NE1/4 SE1/4, SECTION 9, T.30N., R.31W., P.M.MT., LINCOLN COUNTY, MONTANA
 FOR: LAFATA DATE: JULY, 2024



LEGEND	
	SECTION CORNER: 3.25 INCH DIAMETER BLM BRASS CAP MONUMENT
	QUARTER CORNER: 3.25 INCH DIAMETER BLM BRASS CAP MONUMENT
	SET 5/8 INCH DIAMETER REBAR WITH PLASTIC CAP MARKED SANDERSON, 70400LS
	5/8 INCH DIAMETER REBAR WITH PLASTIC CAP MARKED JHN, 4661S (UNRECORDED)
	5/8 INCH DIAMETER REBAR WITH PLASTIC CAP MARKED BLOCK, 7616S
	5/8 INCH DIAMETER UNCAPPED REBAR
	UNMARKED COMPUTED POINT
	COS No. 4239RB, RECORD
	SUBJECT PROPERTY BOUNDARY, THIS SURVEY
	OLD BOUNDARY LINE
	ADJACENT BOUNDARIES
	DIMENSION LINE
	SECTION SUBDIVISION LINE
	APPROXIMATE STREAM BANK
	COS No. 2590, RECORD
	COS No. 426, RECORD
	PLAT No. 576, RECORD



KSI
 LAND SURVEYING - AERIAL DATA COLLECTION - GEOSPATIAL CONTROL
 LIBBY, MONTANA (406)293-4354