

COS No. 4993RB CORRECTION CERTIFICATE OF SURVEY

BOUNDARY LINE ADJUSTMENT & AGGREGATION OF PARCELS
SW1/4 SW1/4, SECTION 2 & SE1/4 SE1/4, SECTION 3, & E1/2 SECTION 10 &
W1/2 W1/2, SECTION 11, T.30N., R.31W., P.M., MT., LINCOLN COUNTY, MONTANA
FOR: LINCOLN COUNTY PORT AUTHORITY DATE: AUGUST, 2024

NOTE:
5TH STREET EXTENSION RIGHT-OF-WAY WITHIN
SECTION 3 IS ASSUMED 40' IN WIDTH BASED ON
DEED CALLS AND ADJACENT SURVEY DEPICTIONS, NO
RECORD DOCUMENTS SPECIFICALLY DEDICATING THIS
PORTION OF ROAD TO THE PUBLIC COULD BE FOUND.

CORRECTION NOTE:
THE PURPOSE OF THIS MAP IS TO CORRECT AN ERROR DISCOVERED IN THE
LEGAL DESCRIPTION FOR PARCEL C, COS No. 4993RB ON SHEET 1, WHEREAS
THE GENERAL DESCRIPTION INCORRECTLY CITED THE PARCEL AS LYING
WITHIN THE WRONG SECTION. THIS DESCRIPTION HAS BEEN MODIFIED TO CITE
THE CORRECT LOCATION AS THE NE1/4 NE1/4, SECTION 10.

SYMBOL LEGEND

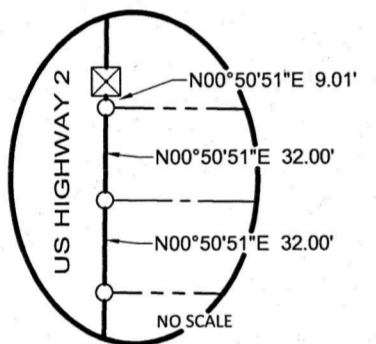
- SECTION CORNER - AS NOTED
- 5/8 INCH DIAMETER UNCAPPED REBAR
- 5/8 INCH DIAMETER REBAR WITH PLASTIC CAP MARKED HUGHES 7322LS
- 5/8 INCH DIAMETER REBAR WITH PLASTIC CAP MARKED JRS 9956S
- SET 5/8 INCH DIAMETER REBAR WITH PLASTIC CAP MARKED SANDERSON 70400LS
- UNMARKED COMPUTED POINT
- 5/8 INCH DIAMETER REBAR WITH PLASTIC CAP MARKED LC HANSON 2523ES
- 5/8 INCH DIAMETER REBAR WITH BLUE PLASTIC CAP MARKED SANDERSON 70400LS
- 5/8 INCH DIAMETER REBAR WITH PLASTIC CAP MARKED KED 4375S
- 5/8 INCH DIAMETER REBAR WITH PLASTIC CAP MARKED MARQUARDT 7328S
- 1/2 INCH DIAMETER UNCAPPED REBAR (UNLESS OTHERWISE NOTED)
- 1 INCH STEEL T-BAR IN CONCRETE
- 1/16 INCH CORNER - BLM BRASS CAP MONUMENT

RECORD DATA LEGEND

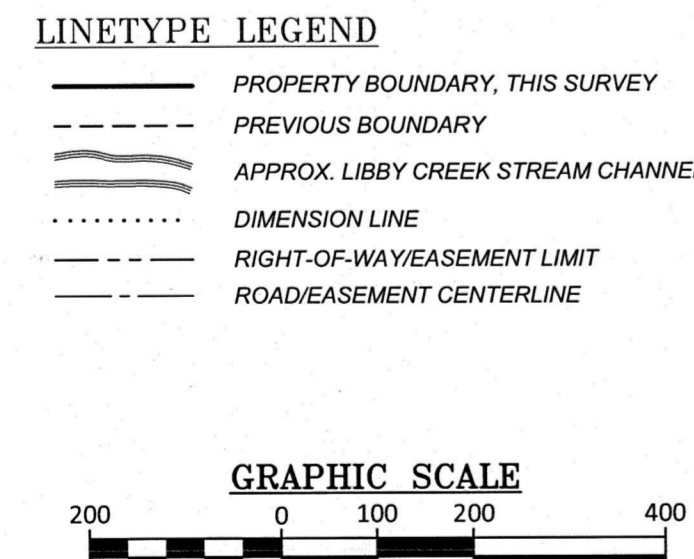
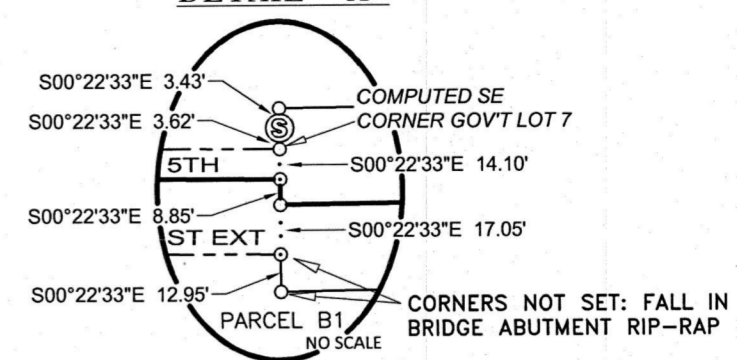
- RECORD, COS No. 4616RB
- RECORD, COS No. 1696
- RECORD, COS No. 3771RB
- RECORD, COS No. 4033
- RECORD, COS No. 2665
- RECORD, COS No. 4090RB
- RECORD, COS No. 4993RB
- RECORD, COS No. 4985RB
- RECORD, COS No. 4959RB
- RECORD, COS No. 4916RB
- RECORD, COS No. 4917RB
- RECORD, COS No. 4918RB
- RECORD, COS No. 4919RB
- RECORD, COS No. 4920RB
- RECORD, COS No. 4921RB
- RECORD, COS No. 4922RB
- RECORD, COS No. 4923RB
- RECORD, COS No. 4924RB
- RECORD, COS No. 4925RB
- RECORD, COS No. 4926RB
- RECORD, COS No. 4927RB
- RECORD, COS No. 4928RB
- RECORD, COS No. 4929RB
- RECORD, COS No. 4930RB
- RECORD, COS No. 4931RB
- RECORD, COS No. 4932RB
- RECORD, COS No. 4933RB
- RECORD, COS No. 4934RB
- RECORD, COS No. 4935RB
- RECORD, COS No. 4936RB
- RECORD, COS No. 4937RB
- RECORD, COS No. 4938RB
- RECORD, COS No. 4939RB
- RECORD, COS No. 4940RB
- RECORD, COS No. 4941RB
- RECORD, COS No. 4942RB
- RECORD, COS No. 4943RB
- RECORD, COS No. 4944RB
- RECORD, COS No. 4945RB
- RECORD, COS No. 4946RB
- RECORD, COS No. 4947RB
- RECORD, COS No. 4948RB
- RECORD, COS No. 4949RB
- RECORD, COS No. 4950RB
- RECORD, COS No. 4951RB
- RECORD, COS No. 4952RB
- RECORD, COS No. 4953RB
- RECORD, COS No. 4954RB
- RECORD, COS No. 4955RB
- RECORD, COS No. 4956RB
- RECORD, COS No. 4957RB
- RECORD, COS No. 4958RB
- RECORD, COS No. 4959RB
- RECORD, COS No. 4960RB
- RECORD, COS No. 4961RB
- RECORD, COS No. 4962RB
- RECORD, COS No. 4963RB
- RECORD, COS No. 4964RB
- RECORD, COS No. 4965RB
- RECORD, COS No. 4966RB
- RECORD, COS No. 4967RB
- RECORD, COS No. 4968RB
- RECORD, COS No. 4969RB
- RECORD, COS No. 4970RB
- RECORD, COS No. 4971RB
- RECORD, COS No. 4972RB
- RECORD, COS No. 4973RB
- RECORD, COS No. 4974RB
- RECORD, COS No. 4975RB
- RECORD, COS No. 4976RB
- RECORD, COS No. 4977RB
- RECORD, COS No. 4978RB
- RECORD, COS No. 4979RB
- RECORD, COS No. 4980RB
- RECORD, COS No. 4981RB
- RECORD, COS No. 4982RB
- RECORD, COS No. 4983RB
- RECORD, COS No. 4984RB
- RECORD, COS No. 4985RB
- RECORD, COS No. 4986RB
- RECORD, COS No. 4987RB
- RECORD, COS No. 4988RB
- RECORD, COS No. 4989RB
- RECORD, COS No. 4990RB
- RECORD, COS No. 4991RB
- RECORD, COS No. 4992RB
- RECORD, COS No. 4993RB

NOTE:
CORNER COULD NOT BE ESTABLISHED
ALONG 64 FOOT WIDE ACCESS AND
UTILITIES EASEMENT AS NECESSARY SITE
IMPROVEMENTS MUST BE COMPLETED
BEFORE MONUMENTS CAN BE SET.

DETAIL "B"



DETAIL "A"



KSI
LAND SURVEYING - AERIAL DATA COLLECTION - GEOSPATIAL CONTROL
LIBBY, MONTANA (406)293-4354