

INSTRUCTIONS

1. Original and/or subsequent record used to evaluate the corner position.
2. Description of evidence found, note discrepancies in the record, state method of establishing lost or obliterated corners.
3. Description of monument and accessories set to perpetuate the corner position.
4. Sketch of corner, show all pertinent data which can best be shown in a sketch example, corner marking, topography ties, position of accessories, etc.
5. Certification must be signed and sealed by Land Surveyor registered in the State of Montana.
6. Fill in Cross Index & Section Diagram at bottom of sheet.

CERTIFIED CORNER RECORDATION

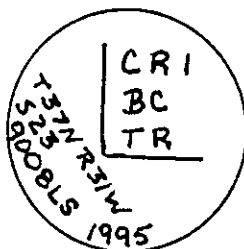
Corner CORNER 1 BOYD HILL CEMETARY (Sec.23) T. 37 N. R. 31 W. P.M.M. Lincoln County

I. 1954 U. S. F. S. Survey record by G. Shultz and J. Francis: As per drawing attached to U. S. F. S. Special Use Permit dated 8/18/54.

II. Found a 1 1/4 in. diam. iron pipe, 40 ins. long, 12 ins. above ground, with stone collar, from which:

A larch 22 ins. diam., bears N 35° E, 14.3 ft. dist., marked C 1 BC BT.

III. At the position of the found iron pipe, I set in its place a 2 1/2 in. diam by 30 ins. long aluminum pipe, 24 ins. in the ground in a collar of stone, with a 3 1/4 in. diam. aluminum cap mkd. as shown.



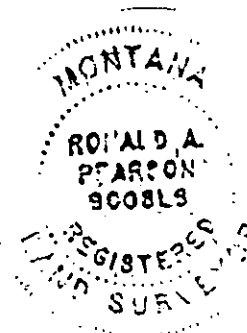
Establish one new bearing tree:

A fir, 15 ins. diam., bears N 77° W, 22.5 ft. dist., mkd. X BT.

Painted a red band around bearing trees and attached Land Survey Monument and Bearing Tree signs.

Set a 6 ft. galvanized steel guard post with Property Boundary and Land Survey Monument decals attached, nearby.

Magnetic Declination: 20° East.



CERTIFICATION

Jeff Hintz

I, Jeff Hintz certify the information shown herein is true and correct.

Signature Ground Party Chief

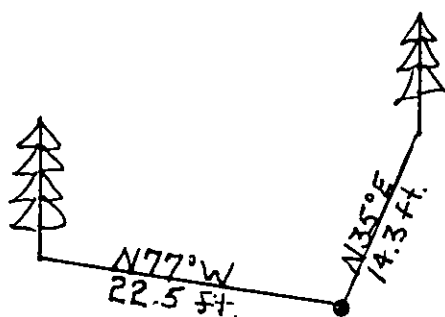
Ronald A. Pearson

I, Ronald A. Pearson certify that this Corner Record correctly represents work performed by me or under my direction in compliance with the "Corner Recordation Act" (70-22-101, et seq., M.C.A.)

Signature of Surveyor & Seal

Date: 12/4/95 Reg. No. 9008LS

Employer: U. S. FOREST SERVICE



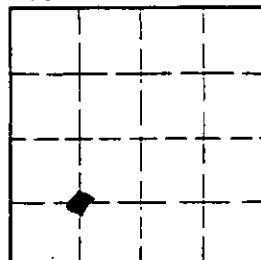
SKETCH OF CORNER

Office of Clerk and Recorder, County of LINCOLN. This "corner record" was filed for record on AUG 21, 1997

was noted on the cross-index plat and is assigned page No. 9924 in book No. CORAL M. CUMMINGS County Official By DGB

Cross Index No. P-18 T. 37 N R. 31 W PMM

Sec. 23



• - corner this sheet