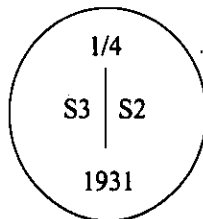


CERTIFIED CORNER RECORDATION

Corner 1/4 Sec. 2/3 T. 36N R. 31W P.M., MT Lincoln County

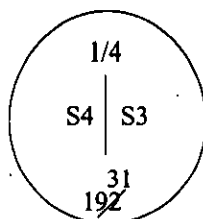
- I. 1931 original G.L.O. record by Ranney Y. Lyman: Set an iron post, 3 ft. long, 1 in. diam., 28 ins. in the ground, with a brass cap mkd:



from which:

A spruce, 12 ins. diam., bears S75° 45'E, 79 lks. dist., mkd. "1/4 S2 BT".
A spruce, 6 ins. diam., bears S85° 30'W, 84 lks. dist., mkd. "1/4 S3 BT".

- II. Found an iron pipe, 1 in. diam, firmly set, with a brass cap, 2 1/2 ins. diam, 3 ins. above the ground, mkd. incorrectly:



from which:

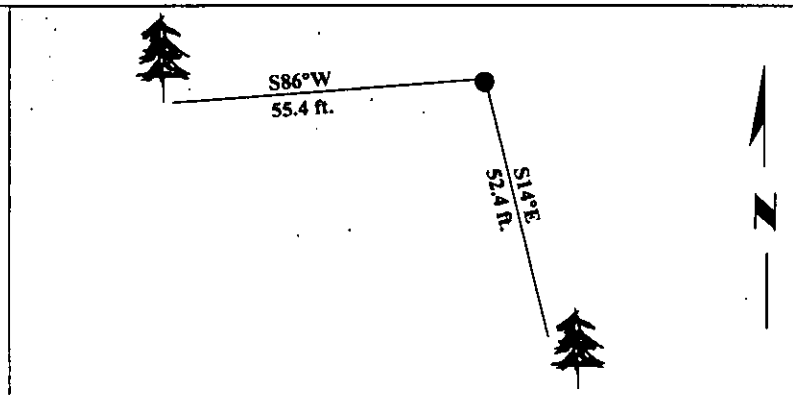
A spruce, 12 ins. diam., bears S86°W, 55.4 ft. (84 lks.) dist., with healed face.

- III. Established 1 new bearing tree:

A spruce, 13 ins. diam., bears S14°E, 52.4 ft. dist., mkd. "1/4 S2 BT".

Painted bearing trees and attached Land Survey Monument and Bearing Tree signs.

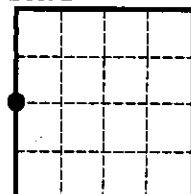
Magnetic Declination: 20° East.



SKETCH OF CORNER

CERTIFICATION	
i. <u>Mark A. Federman</u>	certify the information shown herein is true and correct.
<i>Mark A. Federman</i>	
ii. <u>Alvah F. Hughes</u>	certify that this Corner Record correctly represents work performed by me or under my direction in compliance with the "Corner Recordation Act" (70-22-701, et seq., M.C.A.)
<i>Alvah F. Hughes</i>	
Date: <u>1/24/96</u>	Signature of Surveyor & Seal
Reg. No.: <u>7322LS</u>	
Employer: <u>U.S. FOREST SERVICE</u>	

Office of Clerk and Recorder, County of LINCOLN. This "corner record" was filed for record on JULY 25, 1997 was noted on the cross-index plat and is assigned page No. 9701 in book No. CORAL M. CUMMINGS By DLB



• - corner this sheet