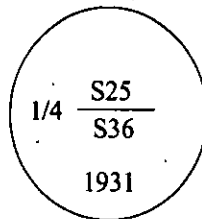


# CERTIFIED CORNER RECORDATION

Corner 1/4 Sec. 25/36 T. 37N R. 31W P.M., MT Lincoln County

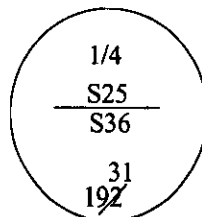
- I. 1931 original G.L.O. record by Ranney Y. Lyman: Set an iron post, 3 ft. long, 1 in. diam., 28 ins. in the ground, with a brass cap mkd:



from which:

- A pine, 4 ins. diam., bears S27 1/2°E, 45 lks. dist., mkd. "1/4 36 BT".
- A pine, 4 ins. diam., bears N26 1/2°W, 30 lks. dist., mkd. "1/4 S25 BT".

- II. Found an iron pipe, 1 in. diam, firmly set, with a brass cap, 2 1/2 ins. diam, 8 ins. above the ground, mkd.:



from which:

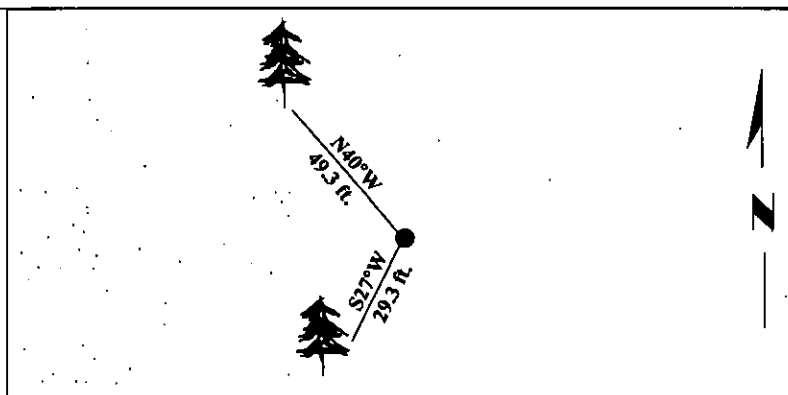
- A pine, 8 ins. diam., bears S27°W, 29.3 ft. (44 lks.) dist., with visible scribing. (G.L.O. rec. 45 lks.)

- III. Established 1 new bearing tree:

- A larch, 9 ins. diam., bears N40°W, 49.3 ft. dist., mkd. "1/4 S25 BT".

Painted bearing trees and attached Land Survey Monument and Bearing Tree signs.

Magnetic Declination: 20° East.



SKETCH OF CORNER

<p>CERTIFICATION</p> <p>I, <u>Mark A. Federman</u>  <small>certify the information shown herein is true and correct.</small></p> <p><i>Mark A. Federman</i></p>	
<p>II, <u>Alvah F. Hughes</u>  <small>certify that this Corner Record correctly represents work performed by me or under my direction in compliance with the "Corner Recordation Act" 70-22-101, et seq., M.C.A.)</small></p> <p><i>Alvah F. Hughes</i>  <small>Signature of Surveyor &amp; Seal</small></p> <p>Date: <u>1/23/96</u></p> <p>Reg. No.: <u>7322LS</u></p> <p>Employer: <u>U.S. FOREST SERVICE</u></p>	
<p>MONTANA  ALVAH F. HUGHES  7322LS  REGISTERED  PROFESSIONAL LAND SURVEYOR</p>	

Office of Clerk and Recorder, County of LINCOLN. This "corner record" was filed for record on JULY 25, 1997 was noted on the cross-index plat and is assigned page No. 9699 in book No. CORAL M. CUMMINGS By RLB  
County Official

