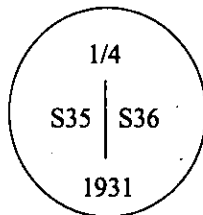


CERTIFIED CORNER RECORDATION

Corner 1/4 Sec. 35/36 T. 37N R. 31W P.M., MT Lincoln County

- I. 1931 original G.L.O. record by Ranney Y. Lyman: Set an iron post, 3 ft. long, 1 in. diam., 28 ins. in the ground, with a brass cap mkd:



from which:

A spruce, 10 ins. diam., bears S62°E, 26 lks. dist., mkd. "1/4 S36 BT".
A spruce, 9 ins. diam., bears N80 1/2°W, 34 lks. dist., mkd. "1/4 S35 BT".

- II. Found an iron pipe, 1 in. diam, firmly set, with a brass cap, 2 1/2 ins. diam, 9 ins. above the ground, mkd. as shown above,

from which:

A broken-off spruce, 20 ins. diam., bears S62°E, 17.2 ft. (26 lks.) dist., with healed face.
A spruce, 16 ins. diam., bears N80°W, 22.4 ft. (34 lks.) dist., with illegible marks.

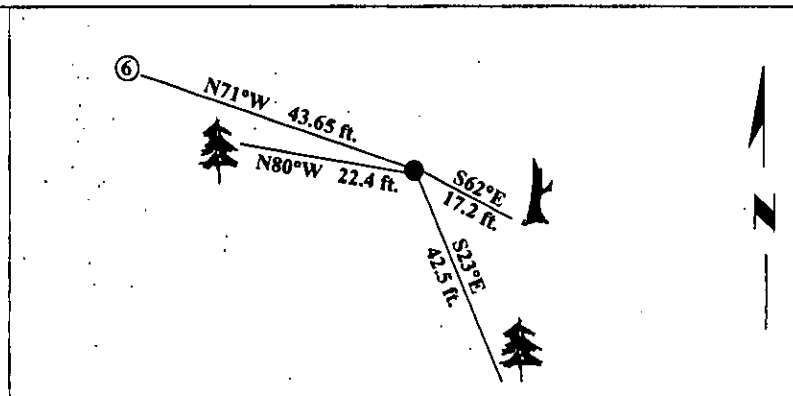
Corner 6 of H.E.S. 283, a 3 1/4 ins. diam. U.S.F.S. alum. cap, bears N71°W, 43.65 ft. dist.

- III. Established 1 new bearing tree:

A larch, 25 ins. diam., bears S23°E, 42.5 ft. dist., mkd. "1/4 S36 BT".

Painted bearing trees and attached Land Survey Monument and Bearing Tree signs.

Magnetic Declination: 20° East.



SKETCH OF CORNER

CERTIFICATION	
I. <u>Ken Kern</u>	certify the information shown herein is true and correct.
<i>Ken Kern</i>	
II. <u>Alvah F. Hughes</u>	certify that this Corner Record correctly represents work performed by me or under my direction in compliance with the "Corner Recordation Act" (70-22-101, et seq., M.C.A.)
<i>Alvah F. Hughes</i>	
Date: <u>1/24/96</u>	Signature of Surveyor & Seal
Reg. No.: <u>7322LS</u>	
Employer: <u>U.S. FOREST SERVICE</u>	

Office of Clerk and Recorder, County of LINCOLN. This "corner record" was filed for record on JULY 25, 1997 was noted on the cross-index plat and is assigned page No. 9698 in book No. CORAL M. CUMMINGS

County Official *By DeB*

Sec. 35

• - corner this sheet