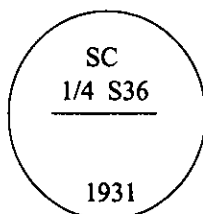


CERTIFIED CORNER RECORDATION

Corner SC 1/4 Sec. 36 T. 37N R. 31W P.M., MT Lincoln County

- I. 1931 original G.L.O. record by Ranney Y. Lyman: Set an iron post, 3 ft. long, 1 in. diam., 28 ins. in the ground, for 1/4 cor. of sec. 36 only, with a brass cap mkd:



from which:

A tamarack, 20 ins. diam., bears N 48°E, 43 lks. dist., mkd. "1/4 S36 SC BT".
A fir, 6 ins. diam., bears N 81 1/2°W, 56 lks. dist., mkd. "1/4 S36 SC BT".

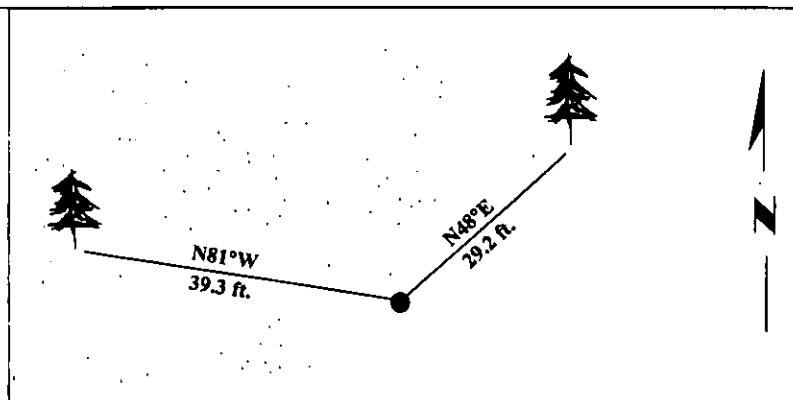
- II. Found an iron pipe, 1 in. diam, firmly set, with a brass cap, 2 1/2 ins. diam, 4 ins. above the ground, mkd. as shown above,

from which:

A larch, 26 ins. diam., bears N 48°E, 29.2 ft. (44 lks.) dist. (G.L.O. rec. 43 lks.)
A fir, 10 ins. diam., bears N 81°W, 39.3 ft. (60 lks.) dist. (G.L.O. rec. 56 lks.)

- III. Painted bearing trees and attached Land Survey Monument and Bearing Tree signs.

Magnetic Declination: 20° East.



SKETCH OF CORNER

CERTIFICATION

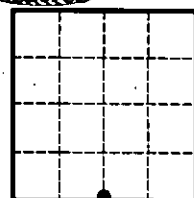
I. Mark A. Federman
certify the information shown herein is true and correct.

II. Alvah F. Hughes
certify that this Corner Record correctly represents work performed by me and under my direction in compliance with the "Corner Recordation Act" (MCA 22-101, et seq., MCA.)

Signature of Surveyor & Seal: Alvah F. Hughes
Date: 1/23/96
Reg. No.: 7322LS
Employer: U.S. FOREST SERVICE

ALVAH F. HUGHES
7322LS
REGISTERED
PROFESSIONAL LAND SURVEYOR
Sec 36

Office of Clerk and Recorder, County of LINCOLN. This "corner record" was filed for record on JULY 25, 1997 was noted on the cross-index plat and is assigned page No. 9697 in book No. CORAL M. CUMMINGS County Official By DKB



• - corner this sheet

Cross Index No. Z-23 T. 37N R. 31W P.M., MT