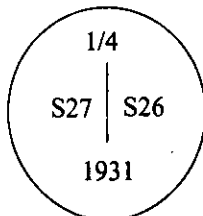


CERTIFIED CORNER RECORDATION

Corner 1/4 Sec. 27 / 26 T. 36N R. 31W P.M., MT Lincoln County

- I. 1931 original G.L.O. record by Ranney Y. Lyman: Set an iron post, 3 ft. long, 1 in. diam., 28 ins. in the ground, with a brass cap mkd:



from which:

A tamarack, 14 ins. diam., bears S 35°E, 5 lks. dist., mkd. "1/4 S26 BT".  
A hemlock, 6 ins. diam., bears N 63°W, 13 lks. dist., mkd. "1/4 S27 BT".

- II. Found an iron pipe, 1 in. diam, firmly set, 6 ins. above the ground, with a 2 1/2 ins. diam. brass cap, mkd. as shown above,

from which:

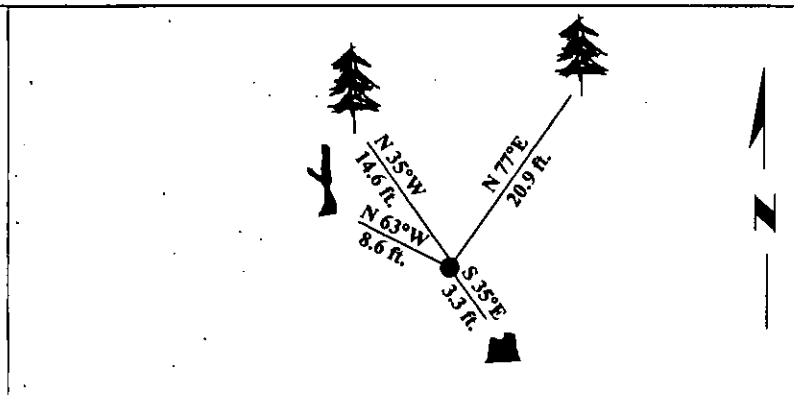
A larch stump, 16 ins. diam., bears S 35°E, 3.3 ft. (5 lks.) dist., mkd. with a healed face.  
A hemlock snag, 9 ins. diam., bears N 63°W, 8.6 ft. (13 lks.) dist., mkd. "1/4 S27 BT".

- III. Established 2 new bearing trees:

A larch, 6 ins. diam., bears N 77°E, 20.9 ft. dist., mkd. "1/4 S26 BT".  
A larch, 4 ins. diam., bears N 35°W, 14.6 ft. dist., mkd. "1/4 S27 BT".

Painted bearing trees and attached Land Survey Monument and Bearing Tree signs.

Magnetic Declination: 20° East.

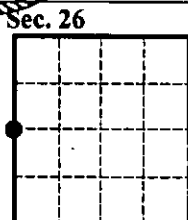


SKETCH OF CORNER

CERTIFICATION	
I, <u>Mark A. Federman</u>	certify the information shown herein is true and correct.
<u>Mark A. Federman</u>	
II, <u>Alvah F. Hughes</u>	
certify that this Corner Record correctly represents work performed by me or under my direction in compliance with the "Corner Recordation Act" (70-22-101, et seq., M.C.A.)	
<u>Alvah F. Hughes</u>	
Date: <u>1/26/96</u>	Signature of Surveyor & Bear
Reg. No.: <u>7322LS</u>	HUGHES 7322LS
Employer: <u>U.S. FOREST SERVICE</u>	REGISTERED PROFESSIONAL LAND SURVEYOR

Office of Clerk and Recorder, County of LINCOLN. This "corner record" was filed for record on JULY 25, 1997 was noted on the cross-index plat and is assigned page No. 9689 in book No. CORAL M. CUMMINGS By ALB

County Official



• - corner this sheet