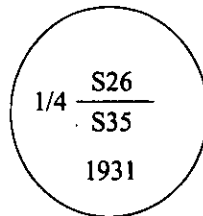


# CERTIFIED CORNER RECORDATION

Corner 1/4 Sec. 26/35 T. 37N R. 31W P.M., MT Lincoln County

- I. 1931 original G.L.O. record by Ranney Y. Lyman: Set an iron post, 3 ft. long, 1 in. diam., 28 ins. in the ground, with a brass cap mkd:



from which:

A fir, 6 ins. diam., bears N 19 1/2°E, 18 lks. dist., mkd. "1/4 S26 BT".  
A fir, 6 ins. diam., bears S 15 1/2°W, 23 lks. dist., mkd. "1/4 S35 BT".

- II. Found an iron pipe, 1 in. diam, firmly set, 12 ins. above the ground, with a 2 1/2 ins. diam. brass cap, mkd. as shown above.

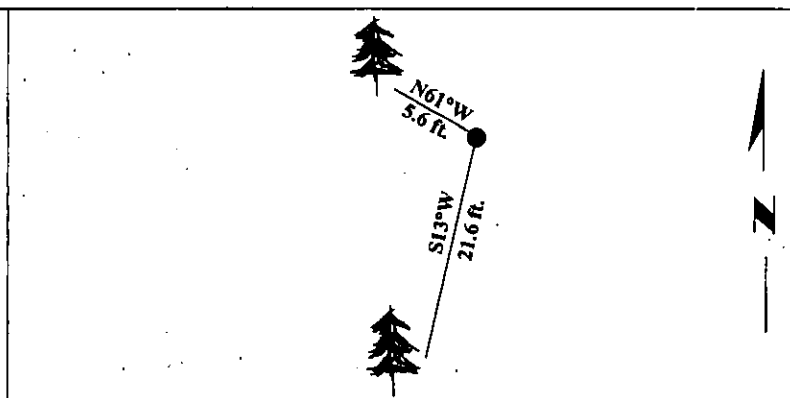
No evidence of original bearing trees found.

- III. Established 2 new bearing trees:

A fir, 12 ins. diam., bears S 13°W, 21.6 ft. dist., mkd. "1/4 S35 BT".  
A fir, 26 ins. diam., bears N 61°W, 5.6 ft. dist., mkd. "1/4 S26 BT".

Painted bearing trees and attached Land Survey Monument and Bearing Tree signs.

Magnetic Declination: 20° East.



SKETCH OF CORNER

CERTIFICATION

I. Mark A. Federman  
certify the information shown herein is true and correct.

II. Alvah F. Hughes  
certify that this Corner Record correctly represents work performed by me or under my direction in compliance with the "Corner Recordation Act" (70-22101, et seq., M.C.A.)

Signature of Surveyor: Alvah F. Hughes

Date: 1/26/96

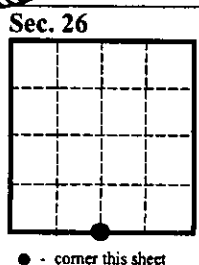
Reg. No.: 7322LS

Employer: U.S. FOREST SERVICE

Professional Land Surveyor Seal: MONTANA, ALVAH F. HUGHES, 7322LS, REGISTERED, PROFESSIONAL LAND SURVEYOR

Office of Clerk and Recorder, County of LINCOLN. This "corner record" was filed for record on JULY 25, 1997 was noted on the cross-index plat and is assigned page No. 9688 in book No. CORAL M. CUMMINGS

County Official



• - corner this sheet