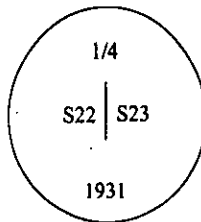


CERTIFIED CORNER RECORDATION

Corner E 1/4 Sec. 22 T. 37N R. 31W P.M., MT Lincoln County

- I. 1931 B.L.M. record by Ranney Y. Lyman: At the corner point, set an iron post, 3 ft. long, 1 in. diam., 20 ins. in the ground, with brass cap mkd. as shown.



Established two bearing trees:

- A spruce, 8 ins. diam., bears N74 1/2°E, 21 lks. dist., mkd. "1/4 S23 BT".
A spruce, 6 ins. diam., bears N59 1/2°W, 38 lks. dist., mkd. "1/4 S22 BT".

- II. Found an iron post, 1 in. diam., 4 ins. above ground, firmly set, with a B.L.M. brass cap mkd. as shown above. A 2 in. square, 4 ft. tall wooden post is set next to the monument. No evidence of orig. BT's exists.

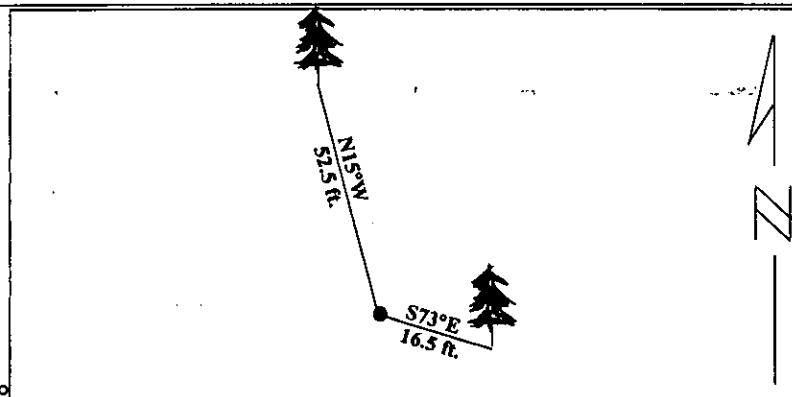
- III. Established two new bearing trees:

- A spruce, 10 ins. diam., bears S73°E, 16.5 ft. dist., mkd. "1/4 S23 BT".
A fir, 11 ins. diam., bears N15°W, 52.5 ft. dist., mkd. "1/4 S22 BT".

Painted red bands around the bearing trees and attached Land Survey Monument and Bearing Tree signs.



Magnetic Declination: 20° East

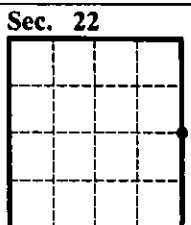


SKETCH OF CORNER

CERTIFICATION	
I, <u>Rex O. Rice</u> certify the information shown herein is true and correct.	
<u>Rex O. Rice</u> Signature Ground Party Chief	
I, <u>Ronald A. Pearson</u> certify that this Corner Record correctly represents work performed by me or under my direction in compliance with the "Corner Recordation Act" (70-22-101, et seq., M.C.A.)	
<u>Ronald A. Pearson</u> Signature of Surveyor & Seal	
Date:	<u>02/01/96</u>
Reg. No.:	<u>9008LS</u>
Employer:	<u>U.S. FOREST SERVICE</u>

Office of Clerk and Recorder, County of LINCOLN. This "corner record" was filed for record on FEB 20, 1997 was noted on the cross-index plat and is assigned page No. 9232 in book No. CORAL M. CUMMINGS By RLB

County Official



• - corner this sheet