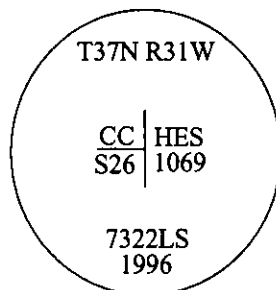


# CERTIFIED CORNER RECORDATION

Corner CC Sec. HES 1069 T. 37N R. 31 W P.M., MT Lincoln County

- I. No previous history.
- II. No evidence found.
- III. At the position determined by survey, set a 30 in. long, 3/4 in. diam. alum. rod, 27 ins. in the ground, with a 3 1/4 in. diam. alum. cap mkd. as shown:



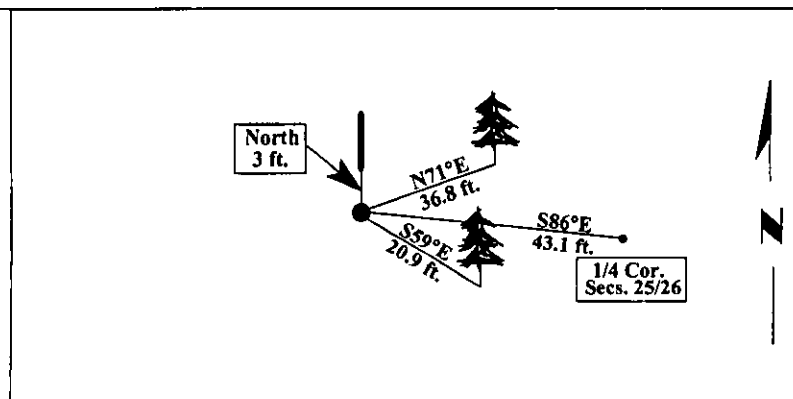
from which:

A spruce, 13 ins. diam., bears N71°E, 36.8 ft. dist., mkd. "CC HES 1069 BT".  
A larch, 12 ins. diam., bears S59°E, 20.9 ft. dist., mkd. "CC HES 1069 BT".  
The 1/4 Cor. of Sec's 25 & 26, bears N88°E, 43.1 ft. dist. from monument.

Painted bearing trees and attached Land Survey Monument and Bearing Tree signs.

Set a 6 ft. steel guard post, North, 3 ft., with Land Survey Monument and Property Boundary decals.

Magnetic Declination: 20° East.

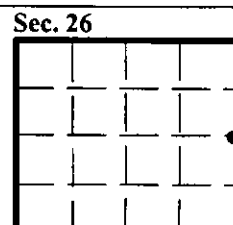


SKETCH OF CORNER

CERTIFICATION	
I. <u>Mark Federman</u>	certify the Information shown herein is true and correct.
II. <u>Alvah F. Hughes</u>	certify that this Corner Record correctly represents work performed by me or under direction in compliance with the "Corner Recordation Act" (70-22-101 et seq., M.C.A.)
Date: <u>12/27/96</u>	Signature of Surveyor & Seal
Reg. No.: <u>7322LS</u>	
Employer: <u>U.S. FOREST SERVICE</u>	

Office of Clerk and Recorder, County of LINCOLN. This "corner record" was filed for record on FEB 3, 1997 was noted on the cross-index plat and is assigned page No. 9166, in book No. \_\_\_\_\_

CORAL M. CUMMINGS County Official



● - corner this sheet

Cross Index No. T 20.95 T. 37N R. 31W P.M., MT