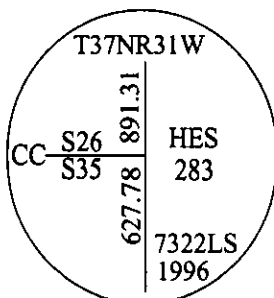


# CERTIFIED CORNER RECORDATION

Corner CC Sec. HES 283 T. 37 N R. 31 W P.M., MT Lincoln County

- I. No previous history.
- II. Found a 1/2 in. diam. rebar. No record found in Lincoln County Clerk and Recorder's office.
- III. At the position determined by survey, set a 30 in. long, 3/4 in. diam. alum. rod, 28 ins. in the ground, with a 3 1/4 in. diam. alum. cap mkd. as shown:



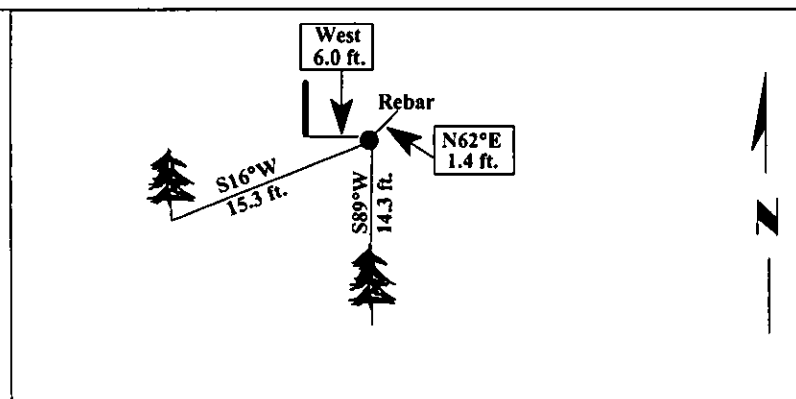
from which:

- A fir, 5 ins. diam., bears S89°W, 14.3 ft. dist., mkd. "X BT".
- A spruce, 7 ins. diam., bears S16°W, 15.3 ft. dist., mkd. "CC HES 283 BT".
- A rebar, 1/2 in. diam., bears N62°E, 1.4 ft. dist., from monument.

Painted bearing trees and attached Land Survey Monument and Bearing Tree signs.

Set a 6 ft. steel guard post, West, 6.0 ft., with Land Survey Monument and Property Boundary decals.

Magnetic Declination: 20° East.



SKETCH OF CORNER

**CERTIFICATION**

I, Mark Federman  
certify the information shown herein is true and correct.

Alvah F. Hughes  
certify that this Corner Record correctly represents work performed by me or under my direction in compliance with the "Corner Recordation Act" (70-22-101, et seq., M.C.A.)

Signature of Surveyor & Seal: Alvah F. Hughes

Date: 12/27/96

Reg. No.: 7322LS

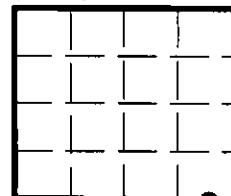
Employer: U.S. FOREST SERVICE

**REGISTERED**  
ALVAH F. HUGHES  
7322 LS

Office of Clerk and Recorder, County of LINCOLN. This "corner record" was filed for record on FEB 3, 1997 was noted on the cross-index plat and is assigned page No. 9165, in book No. CORAL M. CUMMINGS By JB

County Official

Sec. 26



• - corner this sheet