

# CERTIFIED CORNER RECORDATION

Corner 3 HES 833 Sec. 14 / 23 T. 37N R. 31W P.M., MT Lincoln County  
4 HES 843

- I. 1919 U.S. Forest Service original record by W. P. Stephenson: Set a small stone, marked with a cross (x), under an iron post, 2 ins. daim., 36 ins. long, 24 ins. in the ground with a brass cap marked 1919 3 H E S 833, and a point on top for the exact corner point, from which:

A cross (x) on a pine tree, 5 ins. diam., bears S 9° 26'E, 37 lks. dist.

A cross (x) on a pine tree, 6 ins. diam., bears S 77° 19'W, 11 lks. dist., each blazed and scribed 3 H.E.S. 833 BT.

Raised a mound of earth, 4 ft. base, 2 ft. high, SW of corner.

1919 U.S. Forest Service original record by W. P. Stephenson: Intersect Cor. No. 3 of H.E.S. 833, as set by me July 2, 1919, which is an iron post, 2 ins. daim., 12 ins. above the ground with a brass cap marked 1919 3 H E S 833, and a point on top for the exact corner point, identical in point with Cor. No. 3 of the listing survey. The listing Cor. and its accessories were destroyed in the survey of HES 833. I adopt this corner for corner No. 4 of this survey, mark it 4 HES 843 on top. From the point for exact corner point:

A cross (x) on a pine tree, 6 ins. diam., bears N 6° 42'W, 55 lks. dist. (New BT.)

A cross (x) on a pine tree, 5 ins. diam., bears N 39° 35'W, 57 lks. dist. (New BT), each blazed and scribed 4 H.E.S. 843 BT.

Raised a mound of earth and stone, 4 ft. base, 2 ft. high, NW of corner.

1990 Certified Corner Recordation by K. E. Davis: Found the iron post as described above. No bearing trees found.

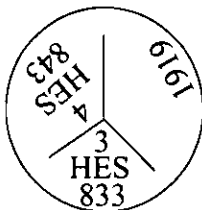
Established two new bearing trees:

A 7 1/2 inch diam. lodgepole pine bears N 15°E. 22.5 ft., scribed "4 HES 843 BT."

A 7 inch diam. lodgepole pine bears N 88° 45'E. 11.4 ft., scribed "4 HES 843 BT."

Placed BT and Land Survey Monument signs. Painted the blazes red. Painted a red band around the tree above the BT sign. Maintain stone mound NW of corner. Set a steel post with Land Survey Marker sticker 2 feet SE of corner.

- II. Found a 2 1/2 in. daim. iron pipe, firmly set, 11 ins. above the ground in a rock collar, with a USFS brass cap mkd. as shown.



from which:

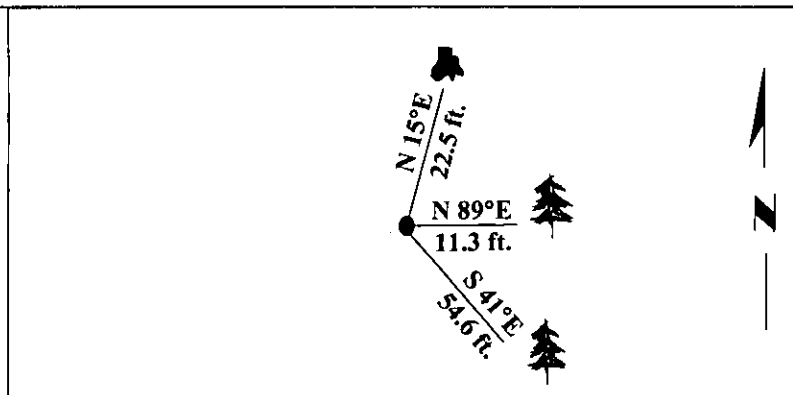
A pine stump, 7 ins. diam., bears N 15°E, 22.5 ft. dist., mkd. 4 HES 843 BT.

A pine, 8 ins. diam., bears N 89°E, 11.3 ft. dist., mkd. 4 HES 843 BT.

- III. Established one new bearing tree:

A larch, 13 ins. diam., bears S 41°E, 54.6 ft. dist., mkd. 3 HES 833 BT.

Painted bearing trees and attached Land Survey Monument and Bearing Tree signs.  
Magnetic Declination: 20° East.



SKETCH OF CORNER

## CERTIFICATION

I. Mark A. Federman

certify the information shown herein is true and correct.

II. Ronald A. Pearson

certify that this Corner Record correctly represents work performed by me or under my direction in compliance with the "Corner Recordation Act" (70-22-101, et seq., M.C.A.)

Signature of Surveyor & Seal

Date: 4/8/96

Reg. No.: 9008LS

Employer: U.S. FOREST SERVICE

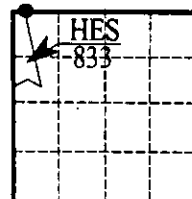
Office of Clerk and Recorder, County of Lincoln. This "corner record" was filed for record

on Apr 21, 1996 was noted on the cross-index plat and is assigned page No. 9005,

in book No. \_\_\_\_\_

Coral M. Cummins  
County Official

Sec. 23



• - corner this sheet

Cross Index No. 3 HES 833 T. 37 N R. 31 W P.M., MT