

CERTIFIED CORNER RECORDATION

Corner 5 HES 506 Sec. 29 T. 37 N R. 31 W P.M., MT Lincoln County

- I. 1915 U.S. Forest Service original record by Fred E. Thieme: Set for Cor. No. 5, a small stone marked with a cross (X) under a trap rock, 24 x 11 x 5 ins., 14 ins. in the ground, marked 5 HES 506 on SE face and a cross (X) on top for the exact corner point, from which:

A cross (x) on a larch tree, 8 ins. diam., bears N 3° 30'E, 40 lks. dist.
A cross (x) on a larch tree, 15 ins. diam., bears N 76° 57'E, 39 lks. dist., each blazed and scribed, 5 H E S 506 BT.

Raised a mound of earth, 4 ft. base, 2 ft. high, SE of corner.

- II. Found a stone, 11 x 5 ins., 9 ins. above the ground, firmly set, marked 5 HES 506 on the NW face.

from which:

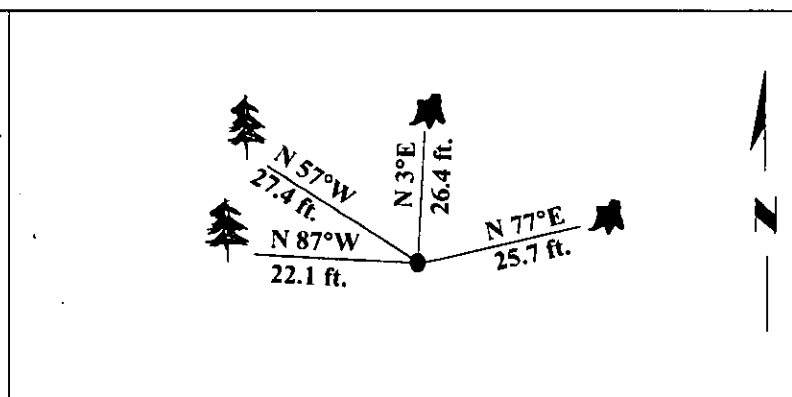
A larch stump, 18 ins. diam., bears N 3°E, 26.4 ft. (40 lks.) dist., mkd. with visible scribe.
A larch stump, 18 ins. diam., bears N 77°E, 25.7 ft. (39 lks.) dist., mkd. 5 HES 506 BT.
A mound of stone, 2' X 1', bears SE, 4.0 ft. dist.

- III. Established two new bearing trees:

A larch, 9 ins. diam., bears N 87°W, 22.1 ft. dist., mkd. 5 HES 506 BT.
A pine, 11 ins. diam., bears N 57°W, 27.4 ft. dist., mkd. 5 HES 506 BT.

Painted bearing trees and attached Land Survey Monument and Bearing Tree signs.

Magnetic Declination: 20° East.

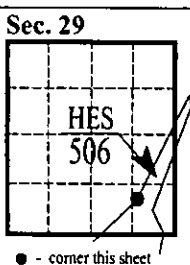


SKETCH OF CORNER

CERTIFICATION	
I. <u>Rex Owen Rice</u>	ROYAL A. PEARSON
certify the information shown herein is true and correct.	
II. <u>Ronald A. Pearson</u>	
certify that this Corner Record correctly represents work performed by me or under my direction in compliance with the "Corner Recordation Act" (70-22-101, 1st sec., M.C.A.)	
Signature of Surveyor & Seal	
Date: <u>4/8/96</u>	
Reg. No.: <u>9008LS</u>	
Employer: <u>U.S. FOREST SERVICE</u>	

Office of Clerk and Recorder, County of Lincoln. This "corner record" was filed for record on Apr 30, 1996 was noted on the cross-index plat and is assigned page No. 9001 in book No. _____

Coral M. Cummings By Debra J. Syster
County Official



Cross Index No. 5 HES 506 T. 37 N R. 31 W P.M., MT