

# CERTIFIED CORNER RECORDATION

Corner 6 HES 527 Sec. 33 T. 37 N R. 31 W P.M., MT Lincoln County

- I. 1915 U.S. Forest Service original record by Fred E. Thieme: Set for Cor. No. 6, a small stone marked with a cross (x) under a granite stone, 24 x 6 x 6 ins., 14 ins. in the ground, marked 6 HES 527 on NW face and a cross (x) on top for the exact corner point, from which:

A cross (x) on a lodgepole pine tree, 12 ins. diam., bears N 54° 55' W, 15 lks. dist.  
A cross (x) on a lodgepole pine tree, 13 ins. diam., bears S 48° 30' W, 23 lks. dist., each blazed and scribed 6 H E S 527 BT.

Raised a mound of earth, 4 ft. base, 2 ft. high, NW of corner.

- II. Found a stone, 6 x 6 ins., 6 ins. above the ground, firmly set, marked 6 HES 527 on the NW face.

from which:

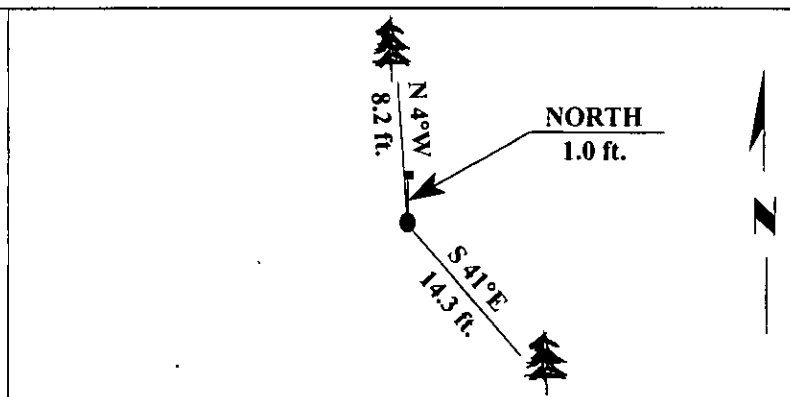
No original bearing trees were found.  
A 6 ft. steel guard post bears North, 1.0 ft. dist. with a Property Boundary decal attached.

- III. Established two new bearing trees:

A pine, 6 ins. diam., bears N 4° W, 8.2 ft. dist., mkd. 6 HES 527 BT.  
A pine, 7 ins. diam., bears S 41° E, 14.3 ft. dist., mkd. 6 HES 527 BT.

Painted bearing trees and attached Land Survey Monument and Bearing Tree signs.

Magnetic Declination: 20° East.



SKETCH OF CORNER

CERTIFICATION

I, Rex Owen Rice  
certify the information shown herein is true and correct.

II, Ronald A. Pearson  
certify that this Corner Record correctly represents work performed by me or under my direction in compliance with the "Corner Recordation Act" (70-22-101, et seq., M.C.A.)

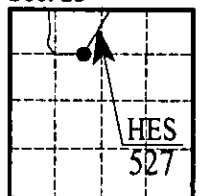
Signature of Surveyor & Seal

Date: 4/8/96

Reg. No.: 9008LS

Employer: U.S. FOREST SERVICE

Sec. 23



• - corner this sheet

Office of Clerk and Recorder, County of Lincoln. This "corner record" was filed for record on Apr 30, 1996 was noted on the cross-index plat and is assigned page No. 9000 in book No. \_\_\_\_\_

Coral M. Cummings  
County Official

Cross Index No. 6 HES 527 T. 37 N R. 31 W P.M., MT