

INSTRUCTIONS

1. Original and/or subsequent record used to evaluate the corner position.
2. Description of evidence found, note discrepancies in the record, state method of establishing lost or obliterated corners.
3. Description of monument and accessories set to perpetuate the corner position.
4. Sketch of corner, show all pertinent data which can best be shown in a sketch example, corner marking, topography ties, position of accessories, etc.
5. Certification must be signed and sealed by Land Surveyor registered in the State of Montana.
6. Fill in Cross Index & Section Diagram at bottom of sheet.

CERTIFIED CORNER RECORDATION

Corner HES 283 Cor. 5 / HES 502 Cor. 1 T. 37 N. R. 31 W. P.M.M. Lincoln County

- I. 1914 HES 283 record by Elmer R. Johnson: Set for Cor. No. 5 a sandstone, 30x12x8 ins., 20 ins. in the ground and marked 5 HES 283 on NE face and a cross (X) on top for exact corner point, from which:

A cross (X) on a quaking aspen, 8 ins. diam., bears $S60^{\circ}12'W$, 162 lks. dist.

A cross (X) on a red fir, 18 ins. diam., bears $N38^{\circ}10'W$, 185 lks. dist.

Each blazed and scribed 5 HES 283 B.T.

Raise a mound of stone, NE of corner.

1915 HES 502 record by Fred E. Thieme: "Identical with Cor. 5 of accepted HES 283, a sandstone, 10x12x8 ins. above ground, mkd. and witnessed by the Surveyor General. I mark this stone 1 HES 502 on SE face, from the cross (X) on top, from which:

A cross (X) on a spruce, 18 ins. diam., bears $N55^{\circ}10'E$, 231 lks. dist.

A cross (X) on a fir, 16 ins. diam., bears $N57^{\circ}46'W$, 169 lks. dist. Each blazed and scribed 1 HES 502 B.T.

Raise a mound of stone, SE of corner.

- II. Found a stone firmly set, 30x12x8 ins. diam., mkd. with a cross (X) on top and 1 HES 502 on SW face, and 5 HES 283 on NE face, and a mound of stone 4 ft. X 2 ft. diam. NE of Cor.

from which:

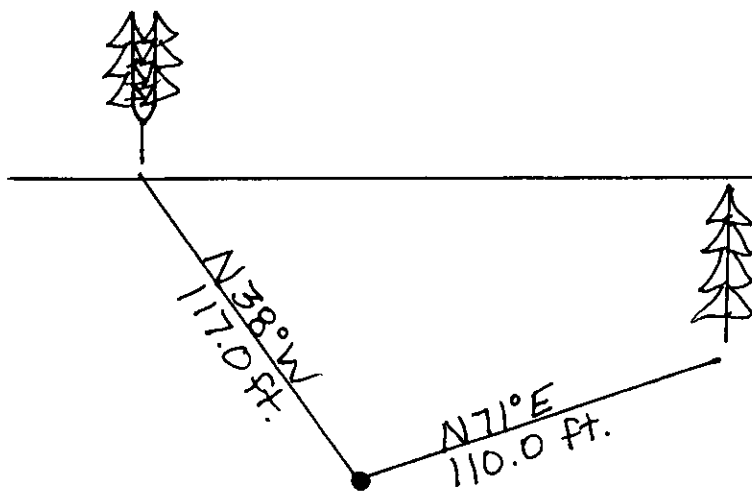
A double fir, 60 ins. diam., bears $N38^{\circ}W$, 117 ft. dist., (record 122 ft. or 185 lks) with an (X) blaze and a healed face.

- III. Establish one new bearing tree:

A larch, 23 ins. diam., bears $N71^{\circ}E$, 110.0 ft. dist., mkd. 5 HES 283 BT.

Painted red bands around the bearing trees and attached "Land Survey Monument" and "Bearing Tree" signs.

Magnetic declination: 20° East



SKETCH OF CORNER

CERTIFICATION

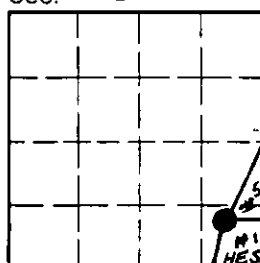
I, Kenneth R. Kern
certify the information shown herein is true and correct
Kenneth R. Kern
Signature Ground Party Chief

I, Alvah P. Hughes
certify that this Corner Record correctly represents work performed
by me or under my direction in compliance with the "Corner
Recordation Act" (70-22-101, et seq., M.C.A.)
Alvah P. Hughes
Signature of Surveyor & Seal

Date: 12/21/94 Reg. No. 7322LS
Employer: U.S. FOREST SERVICE

Office of Clerk and Recorder, County of Lincoln. This "corner
record" was filed for record on April 27, 1995
was noted on the cross-index plat and is assigned page No. 7039, in
book No. Coral M. Cummins B. 03
County Official

Sec. 35



Cross Index No. 1 HES 502 T. 37N R. 31W P.M.M.

• corner this sheet

INSTRUCTIONS TO SURVEYORS FOR COMPLETION OF CERTIFIED CORNER RECORDATION FORMS

I. ORIGINAL AND/OR SUBSEQUENT RECORD:

This item should describe or quote those portions of the original or subsequent record which were used in evaluating the corner position. The original record will usually be the General Land Office field notes. Subsequent record can come from several sources: Previously filed corner records, maps and plats, private and public records, etc. Some of the subsequent record, even though not in the public record, but known to have validity by the surveyor, may be quoted and appropriately noted.

The record data helps support the reestablished corner position because it clearly shows what history the surveyor based his corner position on. In some cases, however, the record may be unknown or not pertinent. A statement to that effect should appear on the corner record.

II. DESCRIPTION OF EVIDENCE FOUND OR METHOD OF LOCATING CORNER POSITION:

This item will describe the original or subsequent record evidence found. If portions of the found evidence cannot be reconciled with the record, then the disregarded record should be noted, and, if possible, an opinion as to its cause narrated.

If no physical evidence of the original or subsequent monuments and accessories can be found, then the method used to reestablish the lost or obliterated corner (single proportion, fence intersection, parol evidence, terrain calls, centerline of road, etc.) shall be indicated.

III. DESCRIPTION OF MONUMENTS AND ACCESSORIES SET TO PERPETUATE THE CORNER POSITION:

This item should list all details about the corner and its location which will help exclusively identify the corner position; including size and type of monument, how marked if not shown in sketch, and distinguishing topographic calls which help locate the corner. In many cases, instructions on how to find the corner should be included.

References or ties to other corners are optional and may be drawn on the face or back of the corner record form, or references to Certificate of Survey may be made. Separate drawings may be attached to the corner form.

If state plane coordinate values for the corner position are shown, then the control upon which they are based should be indicated.

IV. SKETCH OF CORNER:

This item will usually show how a found or set corner is marked and may also show topography or accessory monuments found or set and their relation to the corner. There is no stipulated format; the sketch could be transcribed field note entries.

V. CERTIFICATION:

The name and signature of the ground party chief is optional.

The Surveyor who performed or directed the field work which is depicted on the "Certified Corner Record" shall sign and affix his seal in the Certification.

The employer blank is optional but useful in tracking down original field note data or adjacent record if, in the future, questions arise about the corner.

VI.

The Cross Index at the bottom of the page should be completed by the Surveyor. Only the single Township Index where the corner is filed shall be completed.

The lower righthand corner is a corner location diagram and should have the pertinent section filled in at the top and a closed circle indicating the appropriate corner position in the section filled in. This is intended to be an aid in searching the "Record" once it has been filed.