

INSTRUCTIONS

1. Original and/or supplement record used to evaluate the corner position.
2. Description of evidence found, note discrepancies in the record, state method of establishing lost or obliterated corners.
3. Description of monument and accessories set to perpetuate the corner position.
4. Sketch or corner, show all pertinent data which can best be shown in a sketch example, corner marking, topography ties, position of accessories, etc.
5. Certification must be signed and sealed by Registered Land Surveyor in State of Montana.
6. Fill in Cross Index & Section Diagram at bottom of sheet.

CERTIFIED CORNER RECORDATION

HES 503 COR 5 SEC 21 T37N R31W LINCOLN CO.

FND OLD STONE MON W/"X" CUT 0.60' ABOVE GRD
 "SHES 503" WRITTEN ON SIDE

FND OLD BT 12" LARCH N50°E 26.73' DIST

OLD BT SIGN READS: S51°30'W 27° T37N R31 SEC 22

COR 5 HES 503 POSTED BY 4975-S

FND OLD BT 8" LODGEPOLE PINE S44°E 25.95' DIST ^{10/90}

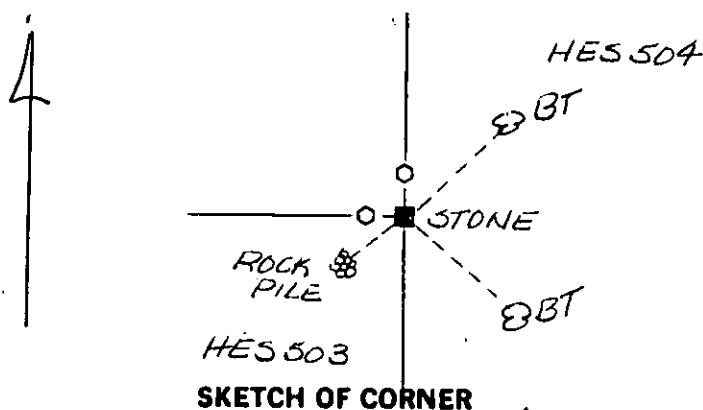
OLD BT SIGN READS: N41°45'W 25° POSTED BY 4975-S

FND OLD STONE PILE S50°W 4.60' DIST ^{10/90}

SET STEEL POSTS W/DECALS 52-4 & 52-9

1) WEST 1.2' DIST

2) NORTH 1.2' DIST.



SKETCH OF CORNER

CERTIFICATION

I, _____
 certify the information shown herein is true and correct.

Signature Ground Party Chief

I, Thomas E. Sands

certify that this Corner Record correctly represents work performed
 by me or under my direction in compliance with the "Corner
 Recordation Act" (70-22-101, et seq., M.D.A.)

Signature of Surveyor & Seal

Date: 7/23/93 Reg. No. 7975-S

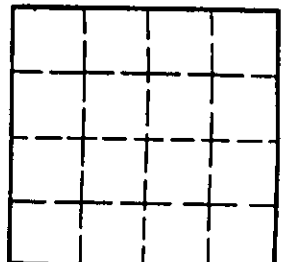
Employer: Sands Surveying, Inc.

Office of Clerk and Recorder, County of Lincoln. This "corner
 record" was filed for record on the July 27, 1993 day of 19,
 was noted on the cross-index plat and is assigned page No. 5360, in
 book No. _____

Carol M. Cummings, B.S.
 County Official

Cross Index No. HES 503-6 T 37N R 31W PMM

Sec.



• corner this sheet