

## INSTRUCTIONS

1. Original and/or subsequent record used to evaluate the corner position.
2. Description of evidence found, note discrepancies in the record, state method of establishing lost or obliterated corners.
3. Description of monument and accessories set to perpetuate the corner position.
4. Sketch of corner, show all pertinent data which can best be shown in a sketch example, corner marking, topography ties, position of accessories, etc.
5. Certification must be signed and sealed by Land Surveyor registered in the State of Montana.
6. Fill in Cross Index & Section Diagram at bottom of sheet.

## CERTIFIED CORNER RECORDATION

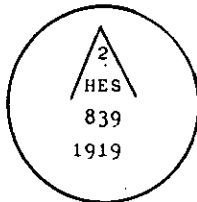
Corner 2 of HES 839 T. 37 N. R. 31 W. P.M.M. Lincoln County

- I. 1919, original record by W. P. Stephenson: Establish Cor. No. 2 of this survey as follows:  
Set a small stone marked with a cross (x), under an iron post, 2 ins. dia., 36 ins. long, 24 ins. in the ground, with a brass cap, marked 1919, 2 HES 839, and a point on top for the exact corner point, from which

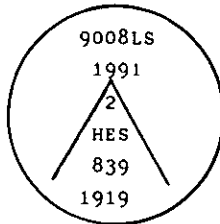
A cross (x) on a pine tree, 8 ins. dia., bears  $S40^{\circ}03'E$ , 34 lks. dist.  
A cross (x) on a pine tree, 5 ins. dia., bears  $S79^{\circ}12'E$ , 26 lks. dist.  
Each blazed and scribed 2 HES 839 BT.

Raise a mound of earth and stone, 4 ft. base, 2 ft. high SE of corner.

- II. Found a 2 in. diam. by 36 in. long iron post with a brass cap mkd. as shown below. Monument was found laying horizontal and partially buried in a dozer pile. Also found a 7 in. diam. tree, with a cross (x), that had been moved from an unknown position. No evidence of other accessories was found.



- III. Corner 2 of HES 839 was considered lost and therefore reestablished by the Grant Boundary adjustment between corners 1 and 3 of HES 839. Corner positions shown are based upon a closed traverse, performed with a total station instrument. At the computed position I set the original monument 30 ins. in the ground with the brass cap mkd. as shown.



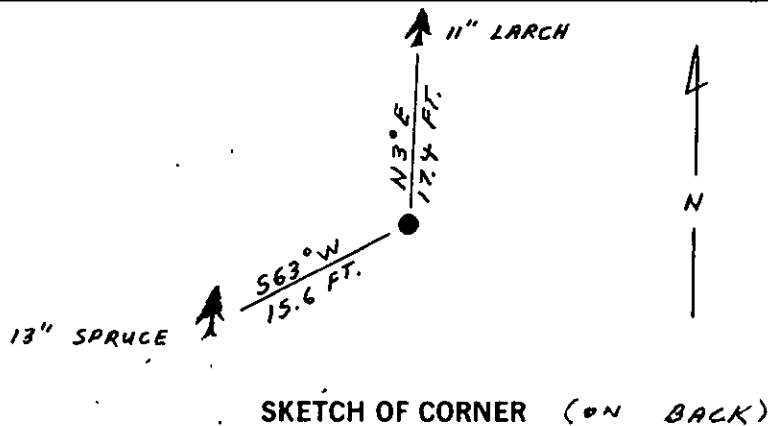
From which

A larch, 11 ins. diam., bears  $N3^{\circ}E$ , 17.4 ft. dist., mkd. 2 HES 839 BT.  
A spruce, 13 ins. diam., bears  $S63^{\circ}W$ , 15.6 ft. dist., mkd. 2 HES 839 BT.

Painted red bands around the bearing trees and attached Land Survey Monument and Bearing Tree signs.  
Set a 6 ft. galvanized steel guard post with Land Survey Marker and Property Boundary decals, South 3 ft.

Magnetic Declination:  $20^{\circ}$  East.

SEE REVERSE SIDE FOR GRANTS BOUNDARY ADJUSTMENT



CERTIFICATION

I, Kevin A. Todd  
certify the information shown herein is true and correct.

Kevin A. Todd  
Signature Ground Party Chief

I, Ronald A. Pearson  
certify that this Corner Record correctly represents work performed by me or under my direction in compliance with the "Corner Recordation Act" (70-22-101, et seq., M.C.A.)

Ronald A. Pearson  
Signature of Surveyor & Seal

Date: 6/20/91 Reg. No. 9008LS

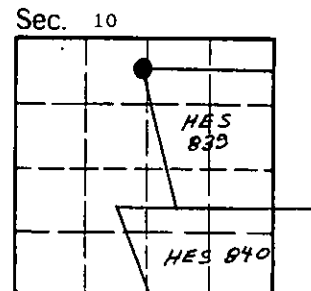
Employer: U.S. FOREST SERVICE



Office of Clerk and Recorder, County of Lincoln. This "corner record" was filed for record on Aug 13, 1991 was noted on the cross-index plat and is assigned page No. 4554, in book No. \_\_\_\_\_

Carol M. Cummings by Bill Bruch  
County Official

Cross Index No. 2 HES 839 T. 37 N R. 31 W P.M.M.



Sec. 10  
• - corner this sheet

COR. 2  
HES 839  
SET ALUMINUM  
MONUMENT

RECORD: N 89° 55' E, 2699.4 FT.  
MEASURE: N 89° 56' 13" E, 2700.94 FT.

COR. 3  
HES 839  
FOUND ORIGINAL  
IRON PIPE & BRASS  
CAP MONUMENT

HES 839

RECORD: N 14° 03' W,  
MEASURE: N 14° 01' 47" E,  
3047.88 FT.  
3049.62 FT.

COR. 1  
HES 839  
SET ALUMINUM  
MONUMENT

