

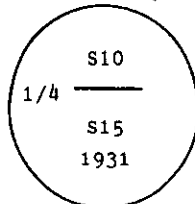
INSTRUCTIONS

1. Original and/or subsequent record used to evaluate the corner position.
2. Description of evidence found, note discrepancies in the record, state method of establishing lost or obliterated corners.
3. Description of monument and accessories set to perpetuate the corner position.
4. Sketch of corner, show all pertinent data which can best be shown in a sketch example, corner marking, topography ties, position of accessories, etc.
5. Certification must be signed and sealed by Land Surveyor registered in the State of Montana.
6. Fill in Cross Index & Section Diagram at bottom of sheet.

CERTIFIED CORNER RECORDATION

Corner 1/4 Cor. of Secs. 10 & 15 T. 37 N. R. 31 W. P.M.M. Lincoln County

- I. 1931, original G.L.O. record by Ranney Y. Lyman: "Set an iron post, 3 ft. long, 1 in. diam., 6 ins. in the ground to bedrock, and in a mound of stone to top, for 1/4 sec. cor., with brass cap marked



from which

A fir, 4 ins. diam., bears N5 1/2° E, 9 lks. dist., marked 1/4 S10 BT.

A fir, 4 ins. diam., bears S24 1/2° W, 8 lks. dist., marked 1/4 S15 BT."

- II. Found, a 1 in. diam. iron pipe, 20 ins. out of the ground, leaning with a 2 ins. diam. G.L.O. brass cap marked as shown above, from which

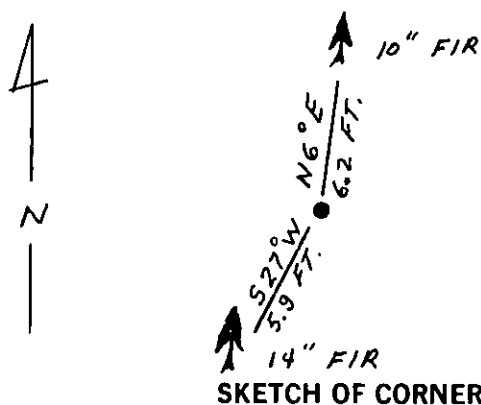
A douglas fir, 10 ins. diam., bears N6° E, 6.2 ft. (9.4 lks.) dist., mkd. 4 S10.

A douglas fir, 14 ins. diam., bears S27° W, 5.9 ft. (8.9 lks.) dist., partial scribe visible.

- III. Straighten pipe monument to upright position and rebuild a 3 ft. diam. mound of stone around the base of the monument.

Painted a red band around each bearing tree and attached Land Survey Monument and Bearing Tree signs.

Magnetic Declination: 20° East



SKETCH OF CORNER

CERTIFICATION

I, Gary C. Crismon
certify the information shown herein is true and correct.

Gary C. Crismon
Signature Ground Party Chief

I, Alvah F. Hughes
certify that this Corner Record correctly represents work performed by me or under my direction in compliance with the "Corner Recordation Act" (70-22-101, et seq., M.C.A.)

Alvah F. Hughes
Signature of Surveyor & Seal

Date: 1/8/91 Reg. No. 7322

Employer: U.S. FOREST SERVICE

Office of Clerk and Recorder, County of Lincoln. This "corner

record" was filed for record on 1-18-91

was noted on the cross-index plat and is assigned page No. 4515, in

book No. _____

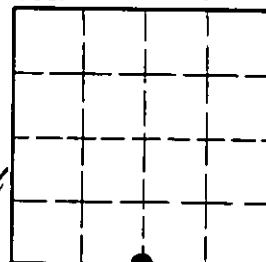
Coral M. Cummings by Bill Brink
County Official

J-15

37 N 31 W

Cross Index No. _____ T. _____ R. _____ P.M.M.

Sec. 10



• - corner this sheet