

## INSTRUCTIONS

1. Original and/or subsequent record used to evaluate the corner position.
2. Description of evidence found, note discrepancies in the record, state method of establishing lost or obliterated corners.
3. Description of monument and accessories set to perpetuate the corner position.
4. Sketch of corner, show all pertinent data which can best be shown in a sketch example, corner marking, topography ties, position of accessories, etc.
5. Certification must be signed and sealed by Land Surveyor registered in the State of Montana.
6. Fill in Cross Index & Section Diagram at bottom of sheet.

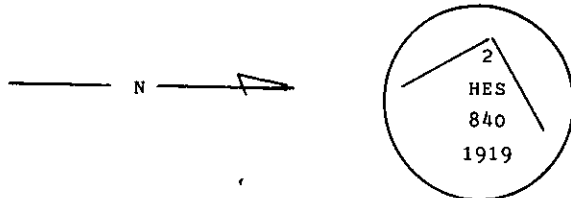
## CERTIFIED CORNER RECORDATION

Corner 2 of HES 840 T. 37 N. R. 31 W. P.M.M. Lincoln County

- I. 1919, original record by W. P. Stephenson: "Establish Cor. No. 2 of this survey as follows:  
Set a small stone marked with a cross (x), under an iron post, 2 ins. dia., 36 ins. long, 24 ins. in the ground, with a brass cap marked 1919, 2 HES 840, and a point on top for the exact corner point, from which

A cross (x) on a pine tree, 7 ins. dia., bears  $S71^{\circ}28'E$ , 37 lks. dist.  
A cross (x) on a pine tree, 8 ins. dia., bears  $S17^{\circ}39'W$ , 28 lks. dist.  
each blazed and scribed 2 HES 840 BT.  
Raise a mound of earth, 4 ft. base, 2 ft. high SE of corner."

- II. Found a 2 ins. dia. iron pipe, 11 ins. out of the ground, with a 2 1/2 ins. dia. U.S.D.A. Forest Service brass cap, marked as shown:



from which

A pine, 12 ins. dia., bears  $S74^{\circ}E$ , 24.5 ft. (37.1 lks.) dist., mkd. 2 HES 840 BT.  
Rotten roots, bears  $S14^{\circ}W$ , 19.0 ft. (28.8 lks.) dist., visible X and 840 BT found on remains of tree alongside.  
Mound of Earth, 3 ft. dia. by 1 1/2 ft. high, SE of corner.

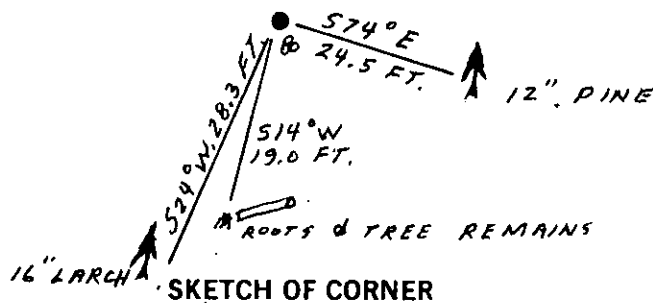
- III. Established one new bearing tree:

A larch, 16 ins. dia., bears  $S24^{\circ}W$ , 28.3 ft., mkd. 2 HES 840 BT.

Painted a red band around each bearing tree and attached Land Survey Monument and Bearing Tree signs.

Set a 6 ft. galvanized steel guard post with Property Boundary and Survey Marker decals attached, 3 ft. East from corner.

Magnetic Declination:  $20^{\circ}$  East.



SKETCH OF CORNER

## CERTIFICATION

I, Gary C. Crismon  
certify the information shown herein is true and correct.

Gary C. Crismon  
Signature Ground Party Chief

I, Alvah F. Hughes  
certify that this Corner Record correctly represents work performed by me or under my direction in compliance with the "Corner Recordation Act" (70-22-101, et seq., M.C.A.)

Alvah F. Hughes  
Signature of Surveyor & Seal

Date: 1/8/91 Reg. No. 7322 7322 LS

Employer: U.S. FOREST SERVICE

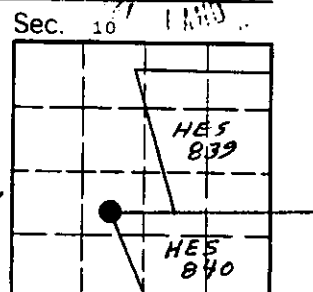
Office of Clerk and Recorder, County of Lincoln. This "corner record" was filed for record on 1-18-91 was noted on the cross-index plat and is assigned page No. 4513, in book No. Coral M Cummings by Bill Buckhoff

County Official

2 HES 840

37 N 31 W

Cross Index No. \_\_\_\_\_ T. \_\_\_\_\_ R. \_\_\_\_\_ PMM



• - corner this sheet