

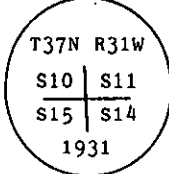
INSTRUCTIONS

1. Original and/or subsequent record used to evaluate the corner position.
2. Description of evidence found, note discrepancies in the record, state method of establishing lost or obliterated corners.
3. Description of monument and accessories set to perpetuate the corner position.
4. Sketch of corner, show all pertinent data which can best be shown in a sketch example, corner marking, topography ties, position of accessories, etc.
5. Certification must be signed and sealed by Land Surveyor registered in the State of Montana.
6. Fill in Cross Index & Section Diagram at bottom of sheet.

CERTIFIED CORNER RECORDATION

Corner of Secs. 10, 11, 14 & 15 T. 37 N. R. 31 W. P.M.M. Lincoln County

- I. 1931. original G.L.O. record by Ranney Y. Lyman: "Set an iron post, 3 ft. long, 2 ins. diam., 28 ins. in the ground, for cor. of secs. 10, 11, 14 and 15, with brass cap marked



from which

- A pine, 9 ins. diam., bears N50 1/2° E. 15 lks. dist., marked T37N R31W S11 BT.
A tamarack, 10 ins. diam., bears S43 1/4° E. 47 lks. dist., marked T37N R31W S14 BT.
A tamarack, 8 ins. diam., bears S31 1/4° W. 14 lks. dist., marked T37N R31W S15 BT.
A pine, 8 ins. diam., bears N46 1/2° W. 48 lks. dist., marked T37N R31W S10 BT.

- II. Found, a 2 in. diam. iron pipe, 6 ins. out of the ground, with a 2 1/2 ins. diam. G.L.O. brass cap marked as shown above, from which

- A log with roots, 8 ins. diam. x 5 ft. length, bears N50° E. 10.0 ft. (15.1 lks.) dist., mkd. T37N R31W S11 BT.
A larch, 17 ins. diam., bears S43° E. 30.5 ft. (46.2 lks.) dist., scribe overgrown.
A larch, 10 ins. diam., bears S32° W. 9.2 ft. (13.9 lks.) dist., mkd. T37N R31W S15 BT.
A snag, 9 ins. diam., bears N48° W. 33.1 ft. (50.1 lks.) dist., mkd. T37N R31W S10 BT.

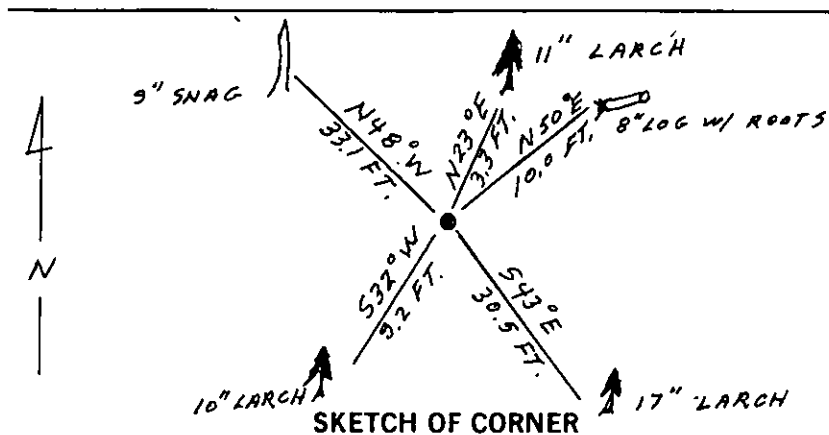
- III. Established one new bearing tree:

- A larch, 11 ins. diam., bears N23° E. 3.3 ft. dist., mkd. T37N R31W S11 BT.
Unable to establish bearing tree in NW quadrant, as it falls in a clearcut.

Painted a red band around each bearing tree and attached Land Survey Monument and Bearing Tree signs.

Set a 6 ft. galvanized steel guard post with Survey Marker and Property Boundary decals attached, 3 ft. East from corner.

Magnetic Declination: 20° East



CERTIFICATION

I, Gary C. Crismon
certify the information shown herein is true and correct.

Gary C. Crismon
Signature Ground Party Chief

I, Alvah F. Hughes
certify that this Corner Record correctly represents work performed by me or under my direction in compliance with the "Corner Recordation Act" (70-22-10), et seq., M.C.A.

Alvah F. Hughes
Signature of Surveyor

Date: 1/8/91 Reg. No. 7322LS

Employer: U.S. FOREST SERVICE

Office of Clerk and Recorder, County of Lincoln. This "corner record" was filed for record on Jan 18, 1991

was noted on the cross-index plat and is assigned page No. 4510, in

book No. _____

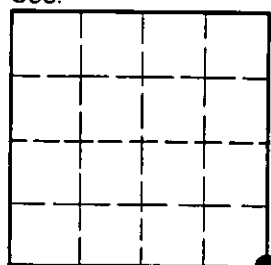
Coral Mcummings by Bill Bruch
County Official

J-17

37 N 31 W

Cross Index No. _____ T. _____ R. _____ P.M.M.

Sec. 10



• - corner this sheet