

CERTIFIED LAND CORNER RECORDATION

COR. NO. 3 OF H.E.S. NO. 499 IN UNSURVEYED TWP. 37 N., R. 31 W., M.P.M.

DESCRIPTION OF CORNER EVIDENCE FOUND, AND ORIGINAL RECORD (IF KNOWN)

The Original Notes Reported That Corner No. 3 Of H.E.S. No. 499 identical  
With Cor. No. 4 of H.E.S, No. 527

Was a Quartsite Stone 10 x 8 x 5 ins. Above Ground and was Marked- 3 H.E.S. 499 on  
NE Face

This Original Corner, Along With All Original Bearing Trees And Mound, Was Washed Out  
And Erroneously Reset.

DESCRIPTION OF MONUMENT AND ACCESSORIES ESTABLISHED  
TO PERPETUATE THE ORIGINAL LOCATION OF THIS CORNER:

Date of work: October, 1975

SEE REVERSE SIDE

SKETCH, WITH COURSE AND DISTANCE TO ADJACENT CORNERS IF DETERMINED IN THIS SURVEY.  
(MAY SKETCH OR PASTE REPRODUCTION ON REVERSE SIDE.)

SEE REVERSE SIDE

Surveyor's Seal

I, Jack H. Ninneman  
certify that the information shown herein is true and  
correct.

*Jack H. Ninneman*  
Signature of Ground Party Chief

I, Jack W. Ninneman  
certify that I have carefully performed or reviewed the  
work done on the diagrammed corner as reported on this  
recording form and approve the same.

*Jack W. Ninneman*  
Signature of Surveyor

DIAGRAM OF CORNER:

N.  
See Reverse  
Side

= Corner recorded on the sheet

534 E.S.  
Registration Number

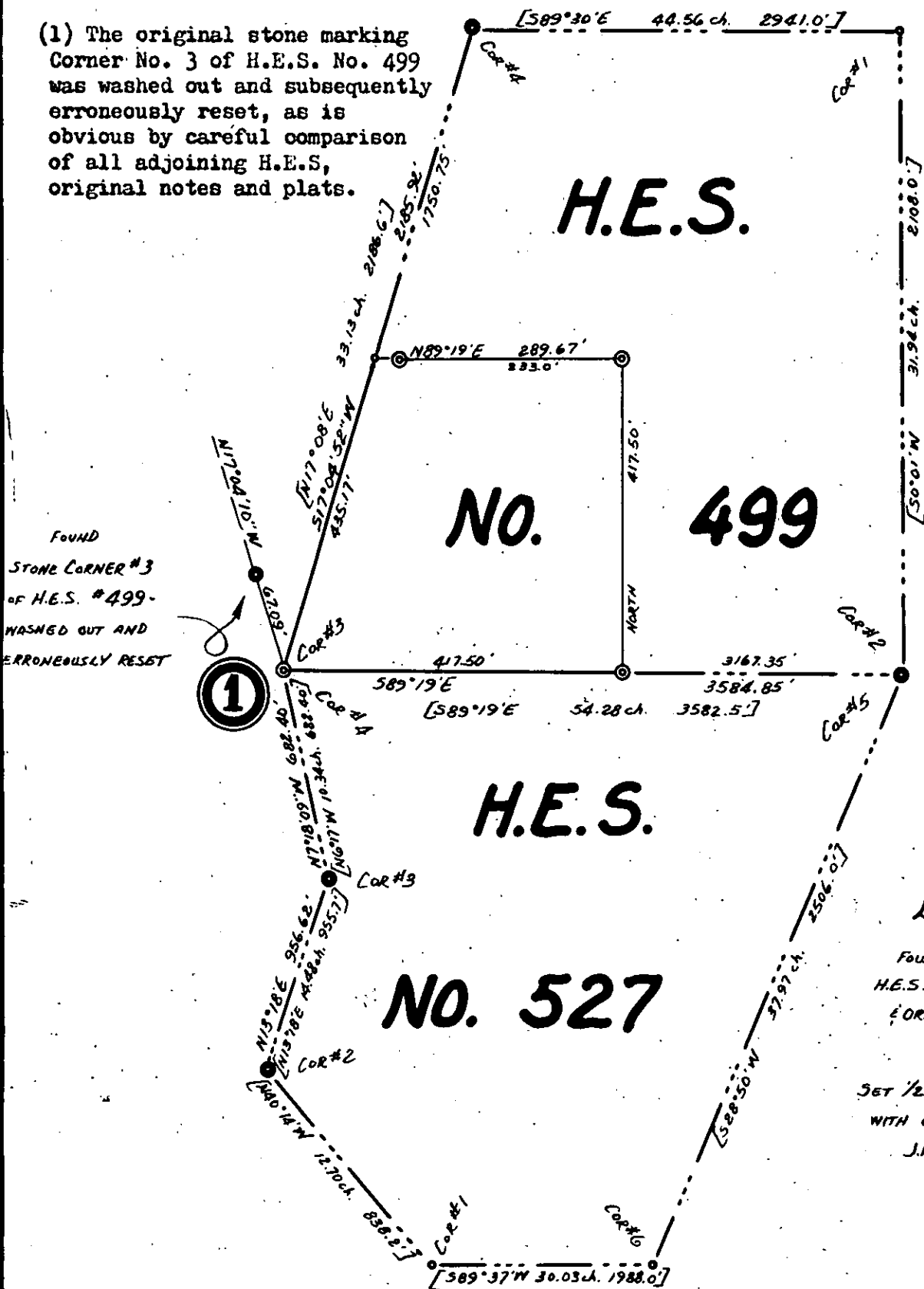
Office of Clerk and Recorder, County of Lincoln

This "corner record" was filed for record on the 19th day of January 1976, was noted on the cross-index plat and is  
assigned page No. 392, in book No. 1

*Eleanor L. Vaughn*  
County Official

**UNSURVEYED TWP. 37 N., R. 31 W.**

(1) The original stone marking Corner No. 3 of H.E.S. No. 499 was washed out and subsequently erroneously reset, as is obvious by careful comparison of all adjoining H.E.S., original notes and plats.



The West lines of H.E.S. No. 499 and H.E.S. No. 527 along with the south line of H.E.S. No. 499 were retraced and a capped steel rod was set at the recorded distance between Cor. No.'s 3 and 4 of H.E.S. No. 527 on the record bearing between Cor. No.'s 2 and 3 of H.E.S. No. 499

## LEGEND

FOUND ORIGINAL  
H.E.S. STONE CORNERS  
E ORIGINAL B.T.S

SET 1/2" X 24" STEEL RODS  
WITH CAPS STAMPED -  
J.N. 534 E.S.