

INSTRUCTIONS

1. Original and/or subsequent record used to evaluate the corner position.
2. Description of evidence found, note discrepancies in the record, state method of establishing lost or obliterated corners.
3. Description of monument and accessories set to perpetuate the corner position.
4. Sketch of corner, show all pertinent data which can best be shown in a sketch example, corner marking, topography lies, position of accessories, etc.
5. Certification must be signed and sealed by Registered Land Surveyor in State of Montana.
6. Fill in Cross Index & Section Diagram at bottom of sheet.

CERTIFIED CORNER RECORDATION

Corner No. 3 H.E.S. No. 505 T. 37 N., R. 31 W., P.M. Lincoln County

1. & 2. Found Original Stone Monument set firmly in place, marked:
3 HES 505 on Southwesterly face with "X" on top from
which:

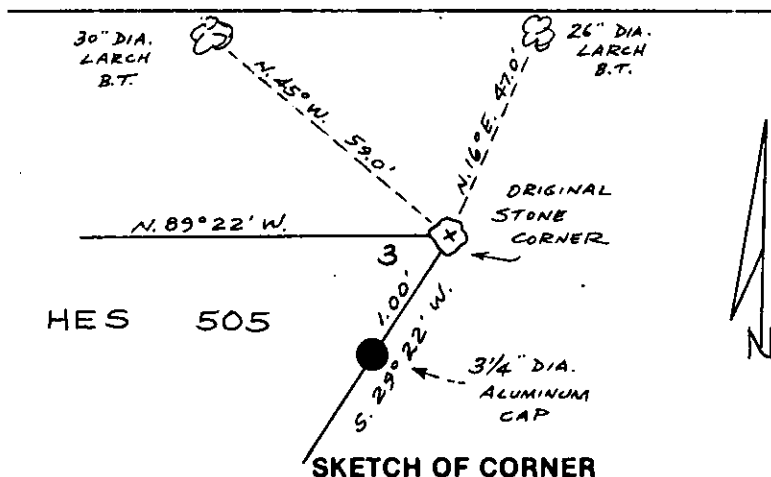
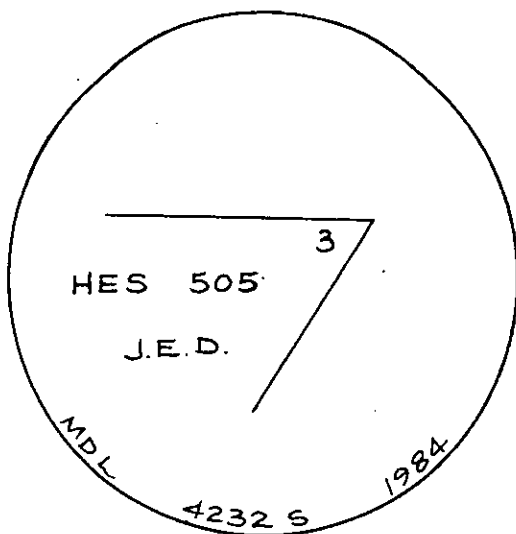
A 26 inch dia. Larch bears N. 16° E., 47.0 feet distant,
with healed over face

A 30 inch dia. Larch bears N. 45° W., 59.0 feet distant,
with partially healed over face

A mound of Stone bears South

3. Reset a fiberglass post with Forest Boundary and Attention Signs
6 inches North of Corner

Set a 2 1/4 inch dia. X 30 inch long Aluminum Pipe with 3 1/4 inch
dia. Aluminum Cap S. 29° 22' W., 1.00 foot distant from Corner
No. 3, marked as shown below:



SKETCH OF CORNER

CERTIFICATION

I, Melvin D. Lauteren

certify the information shown herein is true and correct.

Signature Ground Party Chief

I, Melvin D. Lauteren

certify that this Corner Record correctly represents work performed by me
or under my direction in compliance with the "Corner Recordation Act"
(70-22-201, M.C.A.)

Signature of Surveyor & Seal

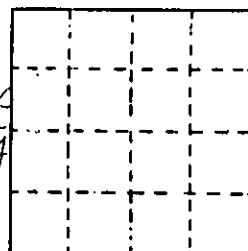
Date: 6/28/1984 Reg. No. 4232 S

Employer: Kootenai Engineering, Inc.

Office of Clerk and Recorder, County of Lincoln. This "corner record" Sec.
was filed for record on the 9th day of July 1984, was noted on the cross-index plat and
is assigned page No. 2665, in book No. Janet B.F. Siegel by Betty L. Conner

County Official deputy

Cross Index No. 37 R 31 PMM



• - corner this sheet