

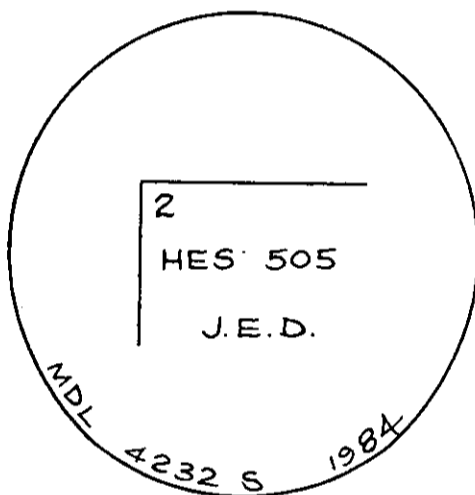
INSTRUCTIONS

1. Original and/or subsequent record used to evaluate the corner position.
2. Description of evidence found, note discrepancies in the record, state method of establishing lost or obliterated corners.
3. Description of monument and accessories set to perpetuate the corner position.
4. Sketch of corner, show all pertinent data which can best be shown in a sketch example, corner marking, topography ties, position of accessories, etc.
5. Certification must be signed and sealed by Registered Land Surveyor in State of Montana.
6. Fill in Cross Index & Section Diagram at bottom of sheet.

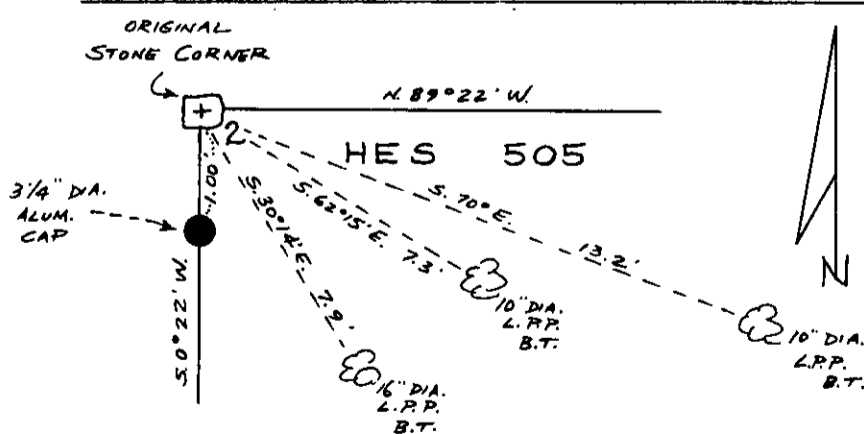
CERTIFIED CORNER RECORDATION

Corner No. 2 H.E.S. No. 505 T. 37 N. R. 31 W. P.M.M. Lincoln County

1. & 2. Found Original Stone Monument set firmly in place, marked:
 2 HES 505 on South face with "X" on top from which:
 A 16 inch dia. Lodgepole Pine bears S. $30^{\circ} 14'$ E.,
 7.9 feet distant, with partial scribing visible
 A 10 inch dia. Lodgepole Pine bears S. $62^{\circ} 15'$ E.,
 7.3 feet distant, with partial scribing visible
 {chopped out}
 A 10 inch dia. Lodgepole Pine bears S. 70° E., 13.2
 feet distant, scribing visible: 2 HES 505 BT
 A fiberglass post with Forest Boundary and Attention
 signs attached bears North 1.7 feet distant
3. Set a 2 1/4 inch dia. X 30 inch long Aluminum Pipe with 3 1/4 inch
 dia. Aluminum Cap S. $0^{\circ} 22'$ W., 1.00 feet distant from Corner
 No. 2, marked as shown below:



NOTE: Corner falls in Northwest Corner of heavily logged area.



SKETCH OF CORNER

CERTIFICATION

I, Melvin D. Lauteren

certify the information shown herein is true and correct.

Signature Ground Party Chief

I, Melvin D. Lauteren

certify that this Corner Record correctly represents work performed by me or under my direction in compliance with the "Corner Recordation Act" (70-201, et seq., M.C.A.)

Signature of Surveyor & Seal

Date: 6/28/1984 Reg. No. 4232 S

Employer: Kootenai Engineering, Inc.

Office of Clerk and Recorder, County of Lincoln. This "corner record" Sec.
 was filed for record on the 9th day of July 1984, was noted on the cross-index plat and
 is assigned page No. 2664, in book No. James B. Siegel by Betty L. Conces

County Official deputy

Cross Index No. 37 R. 31 P.M.M.