

INSTRUCTIONS

1. Original and/or subsequent record used to evaluate the corner position.
2. Description of evidence found, note discrepancies in the record, state method of establishing lost or obliterated corners.
3. Description of monument and accessories set to perpetuate the corner position.
4. Sketch of corner, show all pertinent data which can best be shown in a sketch example, corner marking, topography ties, position of accessories, etc.
5. Certification must be signed and sealed by Registered Land Surveyor in State of Montana.
6. Fill in Cross Index & Section Diagram at bottom of sheet.

CERTIFIED CORNER RECORDATION

Corner No. 1 H.E.S. No. 505 T. 37 N. R. 31 W. P.M.M. Lincoln County

1.} & 2.} Found Original Stone Monument set firmly in place, marked:

- 1 HES 505 on Northeast face, 2 HES 836 on Southeast face,
3 HES 1069 on Southwest face and 4 HES 501 on Northwest face
from which:

A 22 inch dia. Larch bears S. 62° W., 16.0 feet distant.

A 15 inch dia. Larch bears N. 52° 30' W., 13.0 feet distant.

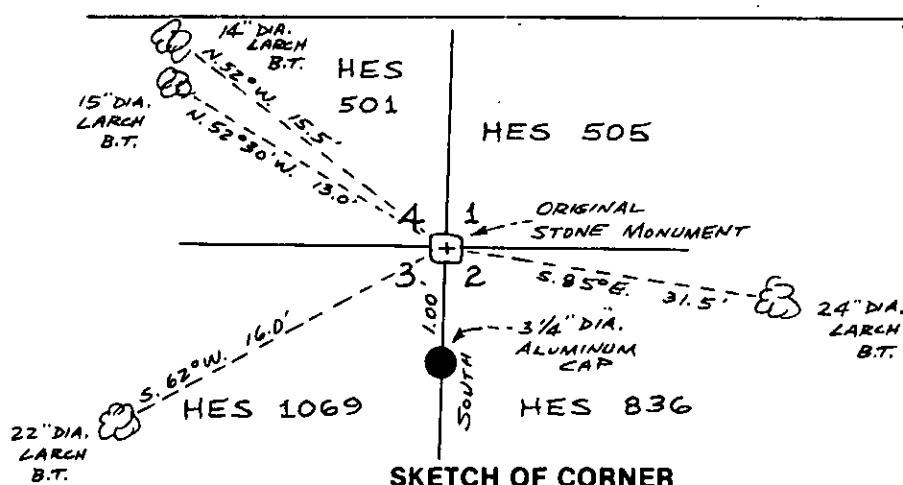
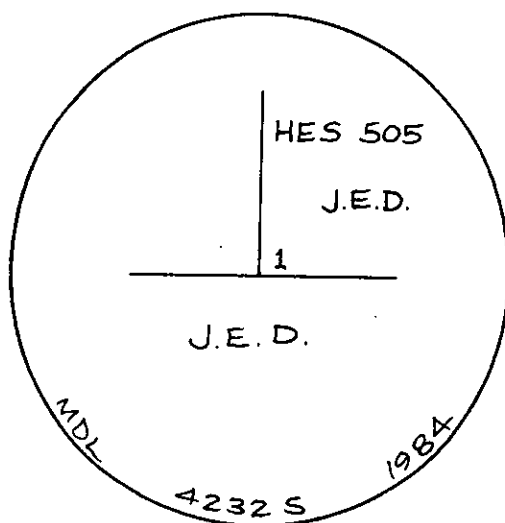
A 24 inch dia. Larch bears S. 85° E., 31.5 feet distant.

A 14 inch dia. Larch bears N. 52° W., 15.5 feet distant.

All Bearing Trees tagged and have healed over faces

Mounds of Stone in all four Quadrants.

- 3.} Set a 2 1/4 inch dia. X 30 inch long Aluminum Pipe with 3 1/4 inch dia. Aluminum Cap South, 1.00 foot distant from Corner No. 1, marked as shown below:



SKETCH OF CORNER

CERTIFICATION

I, Melvin D. Lauteren

certify the information shown herein is true and correct.

Signature Ground Party Chief

I, Melvin D. Lauteren

certify that this Corner Record correctly represents work performed by me or under my direction in compliance with the "Corner Recordation Act" (70-2210, M.C.A.)

Signature of Surveyor & Seal

Date: 6/28/1984 Reg. No. 4232 S

Employer: Kootenai Engineering, Inc.

Office of Clerk and Recorder, County of Lincoln. This "corner record" was filed for record on the 9th day of July 19 84, was noted on the cross-index plat and is assigned page No. 2663, in book No. James B. Siegel by Betty L. Concas

County Official

Cross Index No.

T. 37

R. 31

P.M.M.

• corner this sheet