

Corner Cor. 2 Boyd Mill Cemetery T. 37 N. R. 31 W. P.M.M. LINCOLN County

- I. 1954 U.S.F.S. Survey Record by G. Shultz and J. Francis: As per drawing attached to U.S.F.S. Special Use Permit dated 8/18/54. Sets 1 1/4" diam. x 40" long iron pipes, 30" in the ground for cemetery corners.

1995 Certified Corner Recordation by Ronald A. Pearson, MT Reg. No. 9008LS: Found a 1 1/2 in. diam. pipe, 36 ins. long, 12 ins. above ground.

A larch, 22 ins. diam., bears N87°E. 15.3 ft.. dist., mkd. C 2 BC BT.

At the position of the found iron pipe, I set in its place a 2 1/2 in. diam., by 30 ins. long aluminum pipe with a 3 1/4 in. diam. aluminum cap mkd. as shown.

Establish one new bearing tree:

A pine, 6 ins. diam., bears S17°W. 28.6 ft.. dist., mkd. X BT.

Painted a red band around the bearing trees and attached Land Survey Monument and Bearing Tree signs.

Set a 6 ft. galvanized steel guard post with Survey Marker and Property Boundary decals attached nearby.

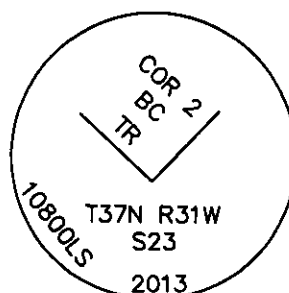
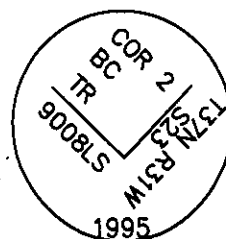
- II. Found: A 2 1/2" diam. U.S.D.A. aluminum pipe, 6" below the surface of the road, bent over with the 3 1/4" diam. aluminum cap torn off and next to pipe. Cap is marked as shown above. Pipe is still in place as determined from the found bearing trees:

A larch, 24 ins. diam., bears N87°E. 15.3 ft.. dist., with a healed face.

A pine, 7 ins. diam., bears S17°W. 28.6 ft.. dist., with a healed face.

- III. Drive a 5/8" diam. X 24" long rebar next to the found aluminum pipe with a 3 1/4" diam. aluminum cap marked as shown. Monument is buried 6" below the surface of the road.

Painted the scribed faces red and 6 in. red bands around the bearing trees. Attached Land Survey Monument and Bearing Tree signs to bearing trees.



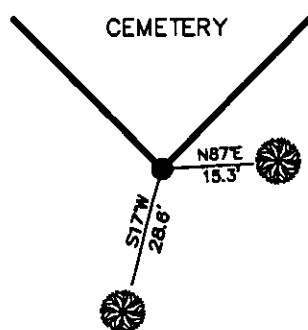
Date of Fieldwork: 6/14/2013

Survey crew: Tom Hommel

Magnetic declination: 14° East assumed

Equipment used: Hand compass and loggers tape

U.S. Forest Service, Supervisors Office, 31374 Hwy. 2, Libby, MT 59923 (406) 293-6211



NOT TO SCALE

CERTIFICATION

I, THOMAS M. HOMMEL, certify the information shown herein is true and correct.

Signature of Land Party: THOMAS M. HOMMEL

I, Thomas M. Hommel, 10800LS, certify that this Corner Record correctly represents work performed by me or under my direction in accordance with the "Corner Recordation Act" (10-25-10, et seq., M.C.A.).

Signature of Surveyor & Seal: [Signature]

Date: 12/3/13 Reg. No. 10800LS

Employer: U. S. Forest Service

Office of Clerk and Recorder, County of Lincoln

248734 BOOK: CCR CC&R'S PAGE: 12094 Pages: 1

STATE OF MONTANA LINCOLN COUNTY

RECORDED: 12/03/2013 12:25 KOI: CC&R'S

TAMMY D. LAUER CLERK AND RECORDER

FEE: \$0.00

BY: [Signature]

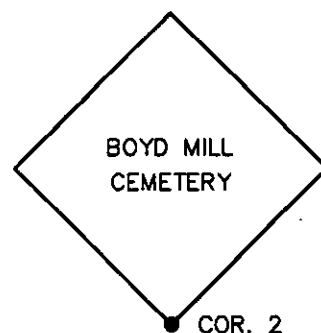
FOR: US FOREST SERVICE 31374 HWY 2, LIBBY, MONTANA 59923

COR. 2

BOYD MILL

Cross Index No. CEMETERY T. 37N. R. 31W. P.M., MT

Adopted July 1, 1981, Montana Board of Professional Engineers & Land Surveyors



● corner this sheet