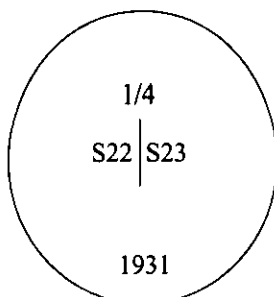


CERTIFIED CORNER RECORDATION

Corner W 1/4 Sec. 23 T. 37N R. 31W P.M., MT Lincoln County

- I. 1931 G.L.O. Original Record by Ranney Y. Lyman et. al: Set an iron post, 3.0 ft. long, 1.0 in. diam., 28 ins. in the ground, for 1/4 sec. cor., with brass cap mkd. as shown.



Established two bearing trees:

- A spruce, 8 ins. diam., bears N74 1/2°E, 21 lks. dist., mkd. "1/4 S23 BT".
A spruce, 6 ins. diam., bears N59 1/2°W, 38 lks. dist., mkd. "1/4 S22 BT".

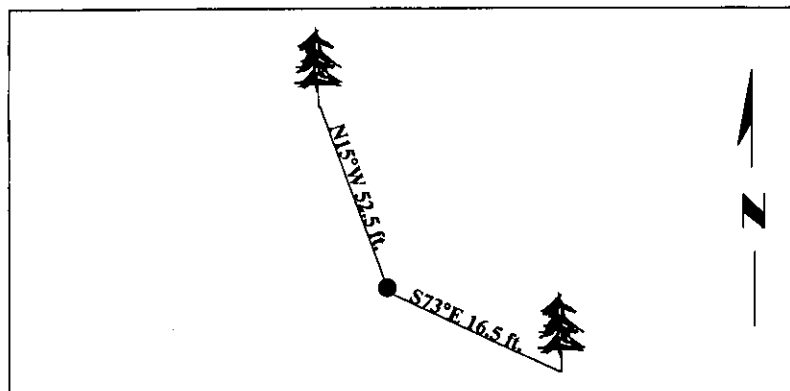
- II. Found an iron post, 1.0 in. diam., with a B.L.M. brass cap, 2 1/2 ins. diam., protruding 4 1/2 ins. above the ground, firmly set, mkd. as shown above. No other original evidence found.

- III. Established two new bearing trees:

- A spruce, 10 ins. diam., bears S73°E, 16.5 ft. dist., mkd. "1/4 S23 BT".
A fir, 11 ins. diam., bears N15°W, 52.5 ft. dist. mkd. "1/4 S22 BT".

Painted bearing trees and attached Land Survey Monument and Bearing Tree signs.
Placed a 4.0 ft. tall, 2.0 ins. square, wooden post, next to the monument.

Magnetic Declination: 20° East.



SKETCH OF CORNER

CERTIFICATION

I, Thomas Hommel
certify the information shown herein is true and correct.

I, Ronald A. Pearson
certify that this Corner Record correctly represents work performed by me or under my direction in compliance with the "Corner Recordation Act" (70-22-101, et seq., M.C.A.)

Signature of Surveyor & Seal

Date: 1/21/98

Reg. No.: 9008LS

Employer: U.S. FOREST SERVICE

RONALD A. PEARSON
9008LS
REGISTERED
LAND SURVEYOR

Office of Clerk and Recorder, County of Lincoln. This "corner record" was filed for record on 1-21-98 was noted on the cross-index plat and is assigned page No. 10069 in book No. _____

Coral M. Cunningham
County Official

Sec. 23

● - corner this sheet