

INSTRUCTIONS

1. Original and/or subsequent record used to evaluate the corner position.
2. Description of evidence, note discrepancies in the record, state method of establishing or obliterated corners.
3. Description of monument and accessories set to perpetuate the corner position.
4. Sketch or corner, show all pertinent data which can best be shown in a sketch example, corner marking, topography ties, position of accessories, etc.
5. Certification must be signed and sealed by Registered Land Surveyor in State of Montana.
6. Fill in Cross Index & Section Diagram at bottom of sheet.

CERTIFIED CORNER RECORDATION

Corner N $\frac{1}{4}$ Section 9 & 4 T. 37 N R. 28 W P.M.M. Lincoln County

Original Survey by Sizer and Jaqueth 1894

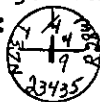
Set a Sandstone 14 x 8 x 6, 10 inches in ground.

A Fir, 4 inches in dia. bears S 7°45'E 14 links.

A Fir, 4 inches in dia., bears N 83° 22 links.

Found

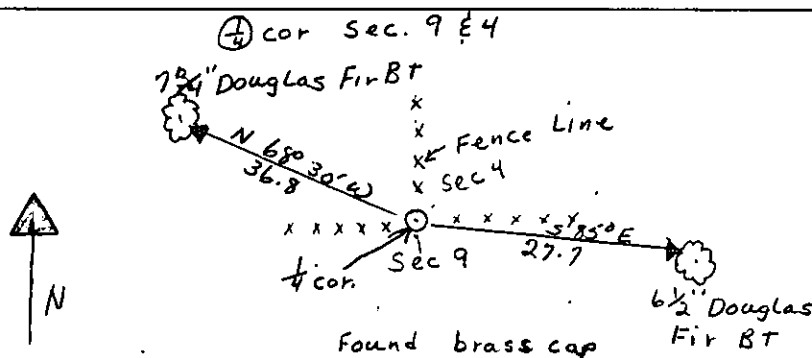
A 2 inch OD galvanized pipe with a 2 $\frac{1}{4}$ inch brass disc marked:

Remonumented

A Douglas Fir, 7 $\frac{3}{4}$ inches DBH, bears, N 68°30'W 36.8 feet from the center of tree, Scribed $\frac{1}{4}$ S4 BT.

A Douglas Fir, 6 $\frac{1}{2}$ inch DBH, bears S 85°E 27.7 feet from center of tree, Scribed $\frac{1}{4}$ S4 BT.

Painted a 6 inch wide red band around BTs with BT signs on front and warning signs #54.9 on back.



SKETCH OF CORNER

CERTIFICATION

I, Ken E. Davis
certify the information shown herein is true and correct.

John Damon, Brian Leisz, Bill Reichel
Signature Ground Party Chief

I, Ken E. Davis
certify that this Corner Record correctly represents work performed by me or under my direction in compliance with the "Corner Recordation Act" (70-22-101), (M.C.A.)

Ken E. Davis
Signature of Surveyor & Seal

Date: 8-15-91 Reg. No. 4975 S

Employer: Davis Surveying, Inc.

Office of Clerk and Recorder, County of Lincoln. This "corner record" was filed for record on the Aug 23 day of 1991 was noted on the cross-index plat and is assigned page No. 4577, in book No. _____

Coral M. Cummings by Bill Buckhoff
County Official

