

## INSTRUCTIONS

1. Original and/or subsequent record used to evaluate the corner position.
2. Description of evidence, note discrepancies in the record, state method of establishing or obliterated corners.
3. Description of monument and accessories set to perpetuate the corner position.
4. Sketch or corner, show all pertinent data which can best be shown in a sketch example, corner marking, topography ties, position of accessories, etc.
5. Certification must be signed and sealed by Registered Land Surveyor in State of Montana.
6. Fill in Cross Index & Section Diagram at bottom of sheet.

## CERTIFIED CORNER RECORDATION

Corner CE 1/16 Section 9 T. 37 N R. 28 W P.M.M. Lincoln County

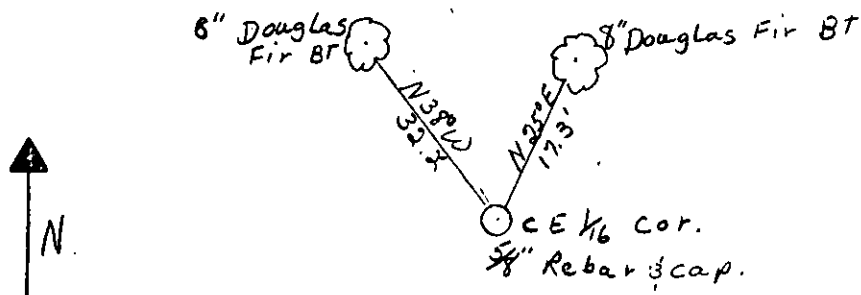
I. 1991 Davis Surveying, Inc.

I set a 5/8 inch dia. x 24 inch long rebar with yellow PVC cap Stamped: KED 4975 S from which;

A Douglas Fir, 8 inches DBH bears N 38°W 32.2 feet from the center of tree, Scribed: CE 1/16 S9 BT.

A Douglas Fir, 8 inches DBH, bears N 25°E 17.3 feet from the center of tree, Scribed: CE 1/16 S9 BT.

Painted a 6 inch wide red band around BTs with BT signs on front and warning signs #54.9 on back.



SKETCH OF CORNER

## CERTIFICATION

I, Ken E. Davis

certify the information shown herein is true and correct.

John Damon, Brian Leisz, Bill

Signature Ground Party Chief

Reichel

I, Ken E. Davis  
certify that this Corner Record correctly represents work performed by me or under my direction in compliance with the "Corner Recordation Act" (MCA 10-22-101 et seq., M.D.A.)

Signature of Surveyor & Seal  
Ken E. Davis

Date: 8/5 4975 4975 S

Employer: Davis Surveying, Inc.

Office of Clerk and Recorder, County of Lincoln This "corner

record" was filed for record on the Aug 23 day of 1991

was noted on the cross-index plat and is assigned page No. 4574 in

book No. Coral Monuments by Bill Reichel

