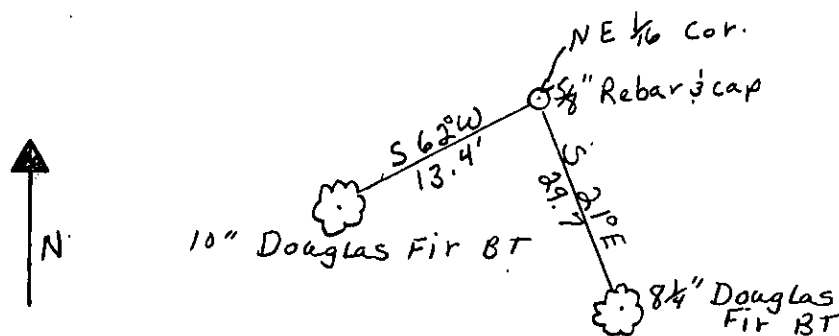


1. Original and/or subsequent record used to evaluate the corner position.
2. Description of evidence used, note discrepancies in the record, state method of establishing lost or obliterated corners.
3. Description of monument and accessories set to perpetuate the corner position.
4. Sketch or corner, show all pertinent data which can best be shown in a sketch example, corner marking, topography lies, position of accessories, etc.
5. Certification must be signed and sealed by Registered Land Surveyor in State of Montana.
6. Fill in Cross Index & Section Diagram at bottom of sheet.

Corner NE 1/16 Section 9 T. 37 N R. 28 W P.M.M. Lincoln County

Painted a 6 inch wide red band around BTs with BT signs on front and warning signs #54.9 on back.



Office of Clerk and Recorder, County of Lincoln. This "corner
record" was filed for record on the Aug 23 day of 1991
was noted on the cross-index plat and is assigned page No. 4573, in
book No. Coral M Cummings by Bill B