

INSTRUCTIONS

1. Original and/or subsequent record used to evaluate the corner position.
2. Description of evidence found, note discrepancies in the record, state method of establishing or obliterated corners.
3. Description of monument and accessories set to perpetuate the corner position.
4. Sketch or corner, show all pertinent data which can best be shown in a sketch example, corner marking, topography ties, position of accessories, etc.
5. Certification must be signed and sealed by Registered Land Surveyor in State of Montana.
6. Fill in Cross Index & Section Diagram at bottom of sheet.

CERTIFIED CORNER RECORDATION

Corner CWNE 1/64 Section 9 T. 37 N R. 28 W P.M.M. Lincoln County

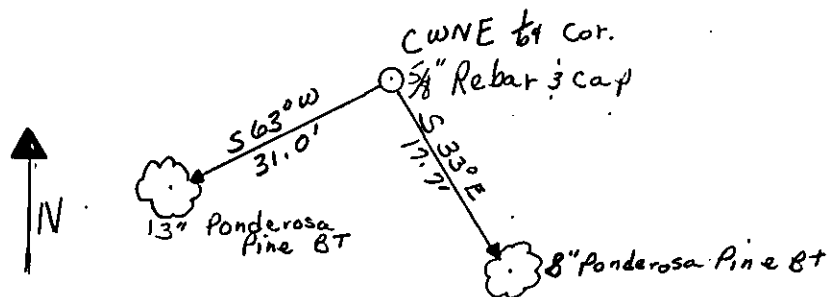
I. 1991 Davis Surveying, Inc.

I set a 5/8 inch dia. x 24 inch long rebar with yellow PVC cap Stamped: KED 4975 S from which;

A Ponderosa Pine, 13 inches DBH, bears S 63°W 31.0 feet from the center of tree, Scribed: CWNE 1/64 S9 BT.

A Ponderosa Pine, 8 inches DBH, bears S 33°E 17.7 feet from the center of tree, Scribed: CWNE 1/64 S9 BT.

Painted a 6 inch wide red band around BTs with BT signs on front and warning signs #54.9 on back.



SKETCH OF CORNER

CERTIFICATION

Ken E. Davis

I, Ken E. Davis certify the information shown herein is true and correct.

John Damon, Brian Leisz, Bill

Signature of Ground Party Chief Reichel

I, Ken E. Davis certify that this Corner Record correctly represents work performed by me or under my direction in compliance with the "Corner Recordation Act" (70-22-107, 108, 109, M.D.A.)

Signature of Surveyor & Seal
Date: 8-23-91 4975 S

Employer: Davis Surveying, Inc.

Office of Clerk and Recorder, County of Lincoln This "corner

record" was filed for record on the Aug 23 day of 1991

was noted on the cross-index plat and is assigned page No. 4572 in

book No. Carol M Cummings by Bill Reichel

Sec.

