

INSTRUCTIONS

1. Original and/or survey record used to evaluate the corner position.
2. Description of evidence found, note discrepancies in the record, state method of establishing or obliterated corners.
3. Description of monument and accessories set to perpetuate the corner position.
4. Sketch or corner, show all pertinent data which can best be shown in a sketch example, corner marking, topography ties, position of accessories, etc.
5. Certification must be signed and sealed by Registered Land Surveyor in State of Montana.
6. Fill in Cross Index & Section Diagram at bottom of sheet.

CERTIFIED CORNER RECORDATION

Corner 1/4 Corner Section 9&10 T. 37N R. 28W P.M.M. Lincoln County

Original Survey by Sizer and Jaqueth 1894

Set Limestone 16 x 8 x 4, 11 inches in ground.

A fir, 14 inches bears S 30°W 34 links

A tamarack, 22 inches bears N 34°30'E 64 links

Found

A 2 inch OD galvanized pipe with brass cap marked:

A pile of rock

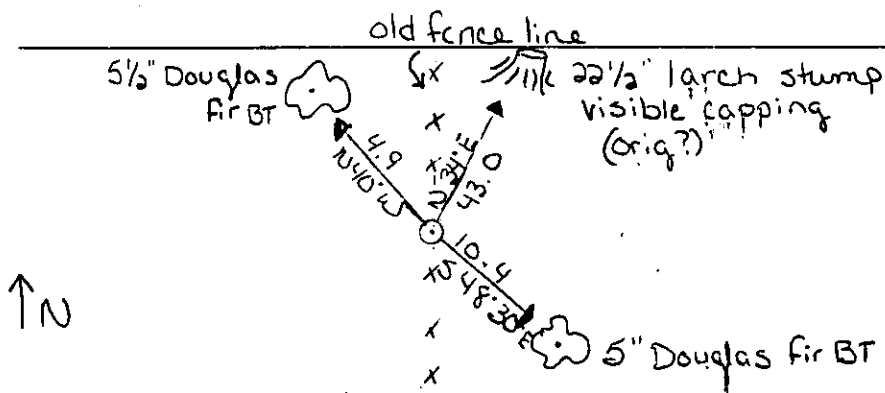
A larch stump 22½ inches visible scribing bears
N 34°E 43.0 feet

Remonumented

A Douglas fir, 5½ inches DBH bears N 40°W 4.9 feet
from the center of the tree, scribed ¼ S9 BT

A Douglas fir, 5 inches DBH bears S 48°30"E 10.4
feet from the center of the tree, scribed ¼ S9 BT

Painted a 6 inch wide red band around BTs with BT
signs on front and warning signs #54.9 on back.



SKETCH OF CORNER

CERTIFICATION

I, Ken E. Davis

certify the information shown herein is true and correct.

John Damon, Brian Leizs, Bill Reichel
Signature Ground Party Chief

I, Ken E. Davis
certify that this Corner Record correctly represents work performed
by me or under my direction in compliance with the "Corner
Recordation Act" (28-22-101, et seq., M.C.A.)

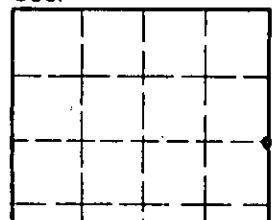
Signature of Surveyor & Seal
Ken E. Davis
REG. NO. 4975 S

Date: 8-5-98

Employer: Davis Surveying, Inc.

Office of Clerk and Recorder, County of Lincoln. This "corner
record" was filed for record on the Aug 23, 1991 day of 19 ,
was noted on the cross-index plat and is assigned page No. 4568, in
book No. _____

Sec.



Charles M. Cummings by Bill Reichel
County Official