

## INSTRUCTIONS

1. Original and/or suitable record used to evaluate the corner position.
2. Description of evidence, note discrepancies in the record, state method of establishing or obliterated corners.
3. Description of monument and accessories set to perpetuate the corner position.
4. Sketch or corner, show all pertinent data which can best be shown in a sketch example, corner marking, topography ties, position of accessories, etc.
5. Certification must be signed and sealed by Registered Land Surveyor in State of Montana.
6. Fill in Cross Index & Section Diagram at bottom of sheet.

## CERTIFIED CORNER RECORDATION

Corner Sections 3, 4, 9, & 10 T. 37N R. 28W P.M.M. Lincoln County

Original Survey by Sizer and Jaqueth 1894

Set a Sandstone 16 x 10 x 5, 11 inched in the ground marked with 5 notches on the South and 3 notches on the East from which;

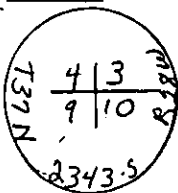
A fir, 24 inched bears N 57°30'E 64 links, marked: T37NR28W S3

A Fir, 12 inches, bears S 46°30'E 43 links, marked: T37NR28W S10.

A Fir, 12 inches, bears S 41°W 66 links, marked: T37NR28W S9.

A tamerack, 24 inches, bears N 50°W 96 links, marked: T37NR28W S4.

## Found



A 2 inch OD galvanized pipe with a 2 1/4 inch brass disc. Marked:

A 21 inch stump, no visible scribe, well rotted, original bears N 59°30'E 42.6 feet.

A 21 inch Fir stump visible scribe, bears S 46°30'E 29.5 feet.

A 23 inch Fir stump no visible scribe, bears S 38°W 41.8 feet.

A 21 inch Larch snag visible scribe, bears N 49°W 61.6 feet.

## Remonumented

I scribed the following bearing trees:

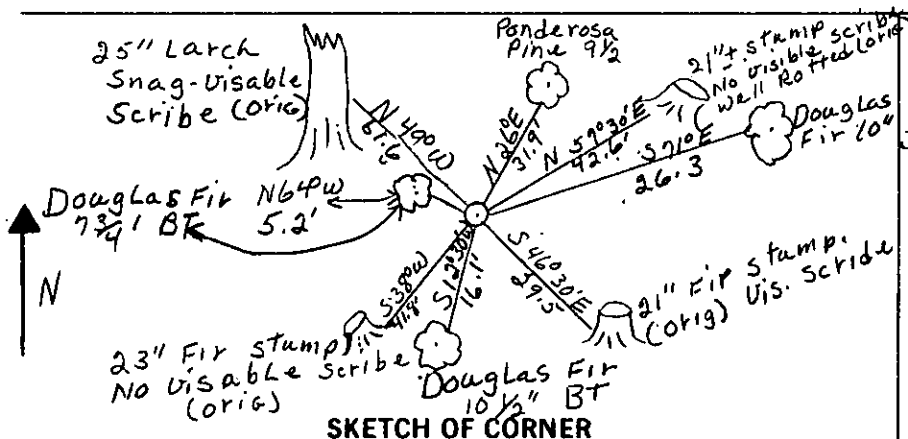
A Ponderosa Pine, 9 1/2 inches DBH, bears N 26°E 31.9 feet from the center of tree, Scribed: T37NR28W S3.

A Douglas Fir, 10 inches DBH bears S71°E 26.3 feet from the center of tree, Scribed: T37NR28W S10.

A Douglas Fir, 10 1/2 inches DBH, bears S12°30'W 16.1 feet from the center of tree, Scribed: T37NR28W S9.

A Douglas Fir, 7 3/4 inches DBH, bears N 64°W 5.2 feet from the center of tree, Scribed: T37NR28W S4.

Painted a 6 inch wide red band around BTs with BT signs on front and warning signs #54.9 on back.



## CERTIFICATION

Ken E. Davis

I, Ken E. Davis, certify the information shown herein is true and correct.

John Damon, Brian Leisz, Bill Reichel

Signature Ground Party Chief

I, Ken E. Davis, certify that this Corner Record correctly represents work performed by me or under my direction in compliance with the "Corner Recordation Act" (70-2-101, et seq., M.C.A.)

Signature of Surveyor & Seal

Date: Aug 23 1991

Employer: Davis Surveying, Inc.

Office of Clerk and Recorder, County of Lincoln. This "corner

record" was filed for record on the Aug 23 day of 1991

was noted on the cross-index plat and is assigned page No. 4567 in

book No. Coral Manning by Bill Reichel

Sec.

