

INSTRUCTIONS

1. Original and/or subsequent record used to evaluate the corner position.
2. Description of evidence found, note discrepancies in the record, state method of establishing lost or obliterated corners.
3. Description of monument and accessories set to perpetuate the corner position.
4. Sketch or corner, show all pertinent data which can best be shown in a sketch example, corner marking, topography ties, position of accessories, etc.
5. Certification must be signed and sealed by Registered Land Surveyor in State of Montana.
6. Fill in Cross Index & Section Diagram at bottom of sheet.

CERTIFIED CORNER RECORDATION

Corner NE CORNER SECTION 16 T. 37N R. 28W P.M.M. Lincoln County

Original Survey by F. Sizer & A. Jaqueth 1894

Set a post 4 feet long, 4 inches square, 24 inches into the ground for corner to sections 9,10,15 & 16 marked T37N S10 on northeast R28W S15 on southeast, S16 on southwest and S9 on northwest faces, with 4 notches on south and 2 notches on east edges; from which:

- An alder 4 ins. diam. bears N 27 E 30 lks. marked T37N R28W S10 BT
- A spruce 5 ins. diam. bears S 90 E 29 lks. marked T37N R28W S15 BT
- An alder 4 ins. diam. bears S 8½ W 50 lks. marked T37N R28W S16 BT
- A spruce 8 ins. diam. bears N 64 45 W 82 lks. marked T37N R28W S9 BT

Remonumentation

Corner set by Shaw 2343s, no recordation was filed on this corner just C.O.S. #12 on file at Lincoln Co. court house.

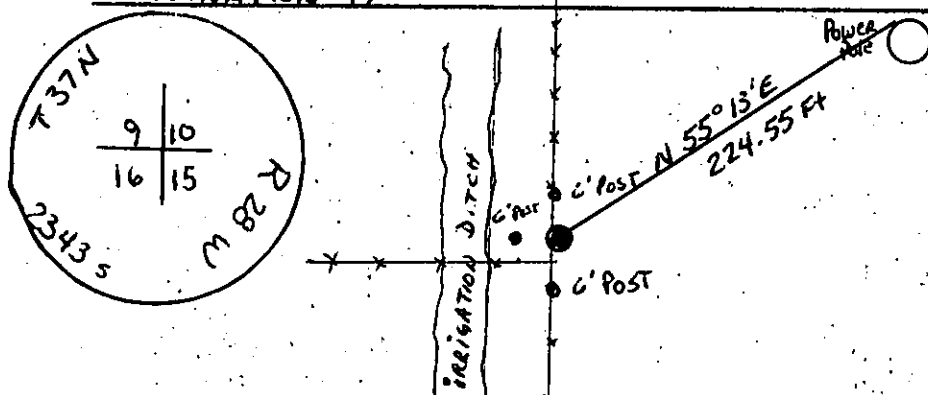
Found

Found a 1½ inch brass cap set in a 1 3/4 inch pipe 4 inches out of the ground, no evidence of original BTs remain.

New bearing objects:

- A 6 foot steel post set 20 inches into the ground bears WEST 3 feet with BT tag attached
 - A 6 foot steel post set 20 inches into the ground bears NORTH 3 feet with BT tag attached
 - A 6 foot steel post set 20 inches into the ground bears SOUTH 3 feet with BT tag attached
 - A powerpole bears N 55° 13' E 224.55 feet with a BT tag attached also painted a 6 inch band of red at D.B.H.
- Also found the remain of 4x4 inch wood post with scribing wired to steel fence post standing alongside brass cap.

DECLINATION 19°



SKETCH OF CORNER

CERTIFICATION

I, DAN CROFT

certify the information shown herein is true and correct.

Dan Croft
Signature of Registered Party Chief

I, GENE WARTEN

certify that this corner record correctly represents work performed by me or under my supervision in compliance with the "Corner Recordation Act," (70-2210, et seq., M.C.A.)

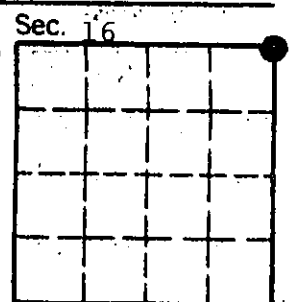
Gene Warten
Signature of Registered Party Chief

Date: 8/14/89 REG. NO. 27345

Employer: ROCKY MOUNTAIN SURVEYORS

Office of Clerk and Recorder, County of Lincoln. This "corner record" was filed for record on the Dec 8, 1989 day of 19, was noted on the cross-index plat and is assigned page No. 4153 in book No. _____

Janet B. Sugley
County Official



Cross Index No. J 13 T. 37N R. 28W P.M.M.

• corner this sheet