

INSTRUCTIONS

1. Original and/or subsequent record used to evaluate the corner position.
2. Description of evidence found, note discrepancies in the record, state method of establishing lost or obliterated corners.
3. Description of monument and accessories set to perpetuate the corner position.
4. Sketch or corner, show all pertinent data which can best be shown in a sketch example, corner marking, topography ties, position of accessories, etc.
5. Certification must be signed and sealed by Registered Land Surveyor in State of Montana.
6. Fill in Cross Index & Section Diagram at bottom of sheet.

CERTIFIED CORNER RECORDATION

Corner C E 1/16 SECTION 11 T. 37N R. 28W P.M.M. Lincoln County

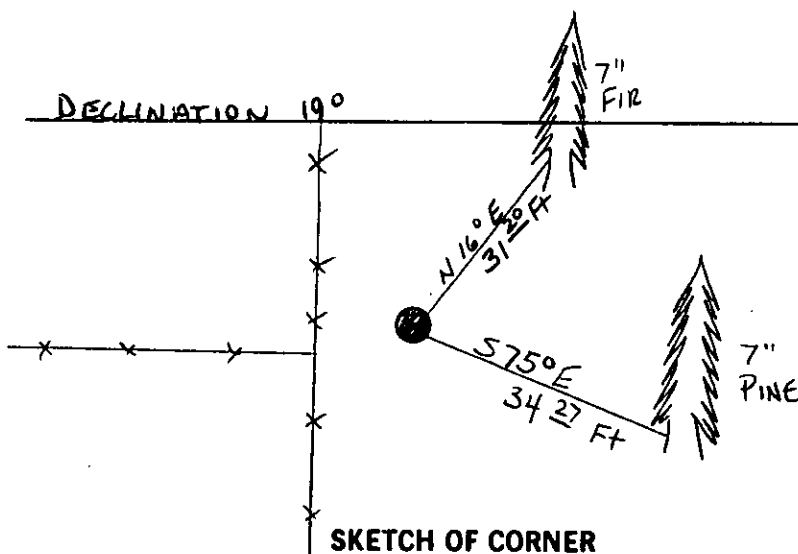
(1) No previous record or evidence.

(2) Monument and accessories set to perpetuate corner position
Set a standard Forest Service 3 1/4 inch alum. cap on 5/8 inch rod 26 inches into the ground; from which:

A 7 inch pine bears S 75 E 34.27 feet scribed C E 1/16 S11
BT

A 7 inch fir bears N 16 E 31.20 feet scribed C E 1/16 S11
BT

Set a U.S.D.A. steel post 3 feet south of corner.



CERTIFICATION

I, DAN CROFT

certify the information shown herein is true and correct.

I, GENE WARREN

certify that this Corner Record correctly represents work performed by me or under my direction in compliance with the "Corner Recordation Act" (70-22-101, et seq., M.D.A.)

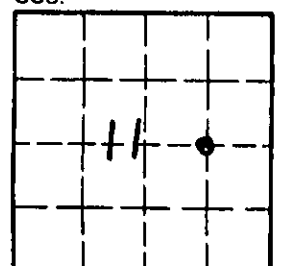
Date: 7-28-89

Employer: ROCKY MOUNTAIN SURVEYORS

Office of Clerk and Recorder, County of Lincoln. This "corner record" was filed for record on the Sept 11, 1989 day of 19 , was noted on the cross-index plat and is assigned page No. 4090, in book No. _____

Cross Index No. G-20 T. 37n R. 28W P.M.M.

Sec. 11



• corner this sheet