

## INSTRUCTIONS

1. Original and/or subsequent record used to evaluate the corner position.
2. Description of evidence found, note discrepancies in the record, state method of establishing lost or obliterated corners.
3. Description of monument and accessories set to perpetuate the corner position.
4. Sketch or corner, show all pertinent data which can best be shown in a sketch example, corner marking, topography ties, position of accessories, etc.
5. Certification must be signed and sealed by Registered Land Surveyor in State of Montana.
6. Fill in Cross Index & Section Diagram at bottom of sheet.

## CERTIFIED CORNER RECORDATION

Corner EAST 1/4 of SECTION 11 T. 37N R. 28W P.M.M. LINCOLN County

## ORIGINAL SURVEY by F. SIZER and A. JAQUETH 1894

Set a post 3 feet long 3 inches square, 24 inches into the ground for 1/4 section corner, marked 1/4 S on west face; from which:  
A 7 inch yellow pine bears S 44 1/2 E 55 lks. mkd. 1/4 S BT  
A 35 inch yellow pine bears S 60 W 33 lks. mkd. 1/4 S BT

## REMONUMENTATION by R. LYMAN 1928

Set a iron post 3 feet long 1 inch in diam., 28 ins. in the ground, for the 1/4 section corner, with brass cap.  
( no bearing tree info. was given in these notes )

## MAINTAINED by B.L.M. 1969

Found 2 inch brass cap 10 inches out of ground, added markes 1969; from which:

The original BTs:

A 18 inch pine bears S 44 1/2 E 55 lks. mkd S  
A stump bears S 60 W 33 lks. mkd. 1/4 S

The new BT:

A 6 inch pine bears S 24 W 29 lks. mkd 1/4 S11 BT

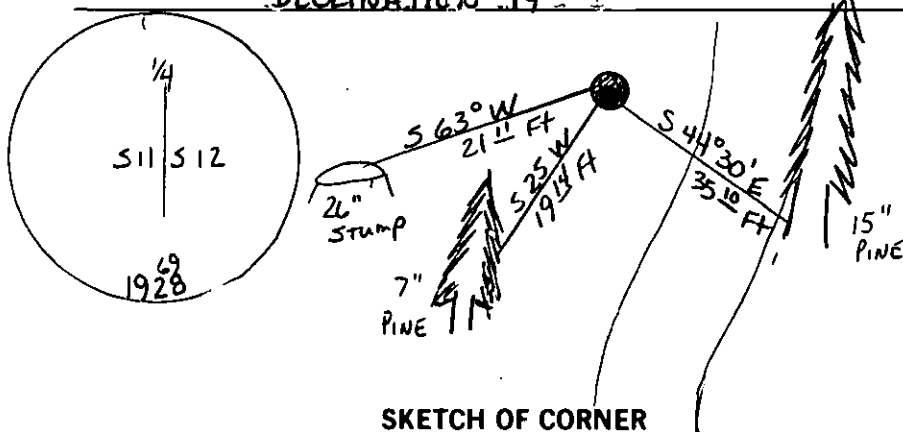
## FOUND

A 2 1/2 inch brass cap 10 inches out of ground, from which:

A 15 inch pine bears S 44 1/2 E 35.10 feet scribe overgrown  
A 7 inch pine bears S 25 W 19.14 feet scribe overgrown  
A 26 inch stump bears S 63 W 21.11 feet mkd. 1/4 S

Maintained with required signs and paint, also set a U.S.D.A. steel post 3 feet east.

DECLINATION 19°



## CERTIFICATION

DAN CROFT

I, DAN CROFT, certify the information shown herein is true and correct.

GENE WARTEN  
Signature of Registered Land Surveyor

I, GENE WARTEN, certify that this corner record correctly represents work performed by me or under my direction in compliance with the "Corner Recordation Act" (70-22-101, et seq., M.C.A.).

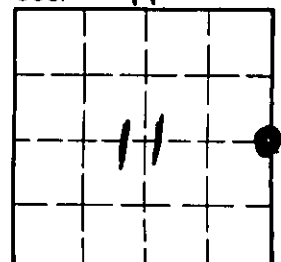
GENE WARTEN  
Signature of Registered Land Surveyor

Date: 7-28-89 GENE WARTEN  
Registered Land Surveyor

Employer: ROCKY MOUNTAIN SURVEYORS

Office of Clerk and Recorder, County of Lincoln. This "corner record" was filed for record on the Sept 11, 1989 day of 19 , was noted on the cross-index plat and is assigned page No. 4087, in book No. \_\_\_\_\_

Janet BF Sigurd  
County Official  
Dup.

Sec. 11Cross Index No. G-21 T. 37N R. 28W P.M.

• - corner this sheet