

INSTRUCTIONS

1. Original and/or subsequent record used to evaluate the corner position.
2. Description of evidence found, note discrepancies in the record, state method of establishing lost or obliterated corners.
3. Description of monument and accessories set to perpetuate the corner position.
4. Sketch of corner, show all pertinent data which can best be shown in a sketch example, corner marking, topography lies, position of accessories, etc.
5. Certification must be signed and sealed by Land Surveyor registered in the State of Montana.
6. Fill in Cross Index & Section Diagram at bottom of sheet.

CERTIFIED CORNER RECORDATION

Cor. on NW Bdy. of C.O. 3514
 Corner and 1/1024 Cor. in Sec. 35 T. 37 N. R. 28 W. P.M.M. Lincoln County

I. Plat No. 1750 by Kenneth Haskell, dated April 1971, and on file with the Lincoln County Clerk and Recorder:
 "I. P."

II. Found a 1 ins. diameter iron pipe, presumed to have been set by Haskell.

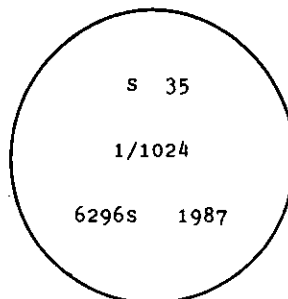
Narrative:

The Warranty Deed filed in Book 5, Pages 76 and 77, dated April 2, 1969, Records of Lincoln County, (which conveyed Tract No. 3514 to the Department Of The Army) indicates that this corner is located on the E-W Center 1/4 line of Section 35 at a distance of 165 feet from the Center East 1/16 corner of Section 35. The position of the found monument is shown as being S. 0° 01' E. 1980.0 feet, N. 89° 55' W. 330.0 feet and S. 51° 10' W. 1054.7 feet from the corner of Sections 25, 26, 35 and 36. To be consistent with the original deed I establish this corner at a proportional 165 feet (i.e. a 1/1024 corner) from the Center East 1/16 Corner of Section 35.

The unaccepted Haskell monument brs. S. 54° 56' W., 34.63 feet.

See Certificate of Survey by 6296S in 1987 for additional information.

III. Set a 3/4" diam. x 30" long aluminum rod monument 1/2 ins. above the ground with a 3 1/4" diam. aluminum Forest Service cap marked as shown below:



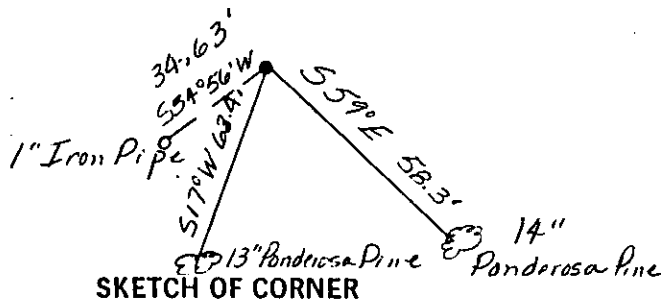
From which I established the following references:

A 14" Ponderosa Pine, brs. S. 59° E., 58.3 feet dist. scribed: 1/1024 S 35 BT.

A 13" Ponderosa Pine, brs. S. 17° W., 63.4 feet dist. scribed: X BT

Set a guard post, with a "Survey Marker" decal attached, 2 ft., N. 51° 38" E. from corner.

Painted red bands around the bearing trees and attached "Land Survey Monument" and "Bearing Tree" signs.



SKETCH OF CORNER

CERTIFICATION

I, Linda S. Smith
 certify the information shown here is true and correct.

Linda S. Smith
 Signatory Group 6296S
 I, Linda S. Smith
 certify that this Corner Record correctly represents work performed by me or under my direction and in accordance with the "Corner Recordation Act" (70-224, et seq., M.C.A.)

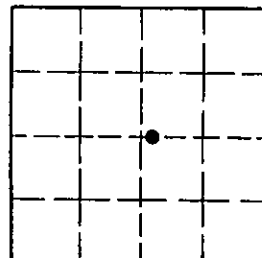
Linda S. Smith
 Signature of Surveyor & Seal
 Date: 7/87 Reg. No. 6296S
 Employer: U.S. FOREST SERVICE

Office of Clerk and Recorder, County of Lincoln. This "corner record" was filed for record on Aug 13, 1987 was noted on the cross-index plat and is assigned page No. 36 35, in book No. _____

Cross Index No. X-19.125 T. 37 N. R. 28 W. P.M.M.

Adopted July 1, 1981, Montana Board of Professional Engineers & Land Surveyors

Sec. 35



• - corner this sheet