

INSTRUCTIONS

1. Original and/or subsequent record used to evaluate the corner position.
2. Description of evidence found, note discrepancies in the record, state method of establishing lost or obliterated corners.
3. Description of monument and accessories set to perpetuate the corner position.
4. Sketch of corner, show all pertinent data which can best be shown in a sketch example, corner marking, topography ties, position of accessories, etc.
5. Certification must be signed and sealed by Land Surveyor registered in the State of Montana.
6. Fill in Cross Index & Section Diagram at bottom of sheet.

CERTIFIED CORNER RECORDATION

Corner SW Cor. C.O.E. Tr. 3518, Sec. 35 T. 37 N. R. 28 W. P.M.M. Lincoln County

I. Plat No. 1851, by Kenneth Haskell, dated July 1971, and on file with the Lincoln County Clerk and Recorder:
"I. P."

II. Found a 1 1/4" diameter hexagonal iron pipe, presumed to have been set by Haskell.

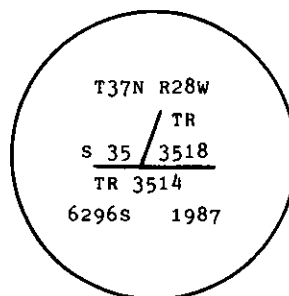
Narrative:

The Warranty Deed filed in Book 9, Pages 173 and 174, Records of Lincoln County, (which created and conveyed Tract No. 3518 to the Department Of The Army) indicates that this corner is located on the Center E-W 1/64 line of the Southeast Quarter of the Northeast Quarter of Section 35. The position of the found monument is shown as being S. 0° 01' E. 1980.0 feet and N. 89° 55' W. 250.0 feet from the corner of Sections 25, 26, 35 and 36. To be consistent with the original conveyance I establish this corner on the said 1/64 line and 250 feet from the point for the S-N 1/64 Corner between Sections 35 and 36.

The unaccepted Haskell monument brs. S. 41° 12' 12" W., 28.31 feet.

See Certificate of Survey by 6296S in 1987 for additional information.

III. Set a 3/4" diam. x 30" long aluminum rod monument 2 ins. above the ground with a 3 1/4" diam. aluminum Forest Service cap marked as shown below:



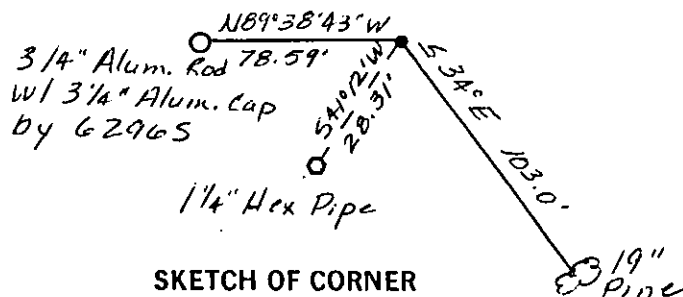
From which I established the following references:

A 19" diam. Ponderosa Pine, brs. S. 34° E. 103.0 ft. dist. scribed: TR 3514 BT.

A 3/4" diam. x 30" long aluminum rod monument with a 3 1/4" diam. aluminum Forest Service cap representing the C-E-SE-NE 1/256 corner of Section 35, brs. N. 89° 38' 43" W., 78.59 feet.

Set a guard post, with a "Survey Marker" decal attached, 2.0 ft. northeasterly from corner.

Painted red bands around the bearing tree and attached "Land Survey Monument" and "Bearing Tree" signs.



SKETCH OF CORNER

CERTIFICATION

I, Linda S. Smith,
certify the information shown herein is true and correct.

Linda S. Smith
Signature of Registered Professional Engineer

I, Linda S. Smith,
certify that this Corner Record correctly represents work performed by me or under my direction and control in accordance with the "Corner Recordation Act" (70-220, et seq., M.C.A.)

Linda S. Smith
Signature of Surveyor & Seal

Date: 7/87 Reg. No. 6296S

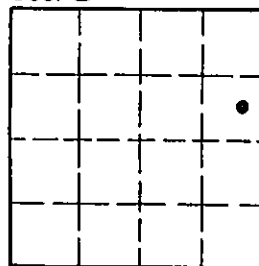
Employer: U.S. FOREST SERVICE

Office of Clerk and Recorder, County of Lincoln. This "corner record" was filed for record on Aug 13, 1987

was noted on the cross-index plat and is assigned page No. 3634, in book No. _____

Grant BF Sigel by Dix Bischoff
County Official

Sec. 35



• - corner this sheet

Cross Index No. 5W-20.8 T. 37 N. R. 28 W. P.M.M.