

INSTRUCTIONS

1. Original and/or subsequent record used to evaluate the corner position.
2. Description of evidence found, note discrepancies in the record, state method of establishing lost or obliterated corners.
3. Description of monument and accessories set to perpetuate the corner position.
4. Sketch of corner, show all pertinent data which can best be shown in a sketch example, corner marking, topography ties, position of accessories, etc.
5. Certification must be signed and sealed by Land Surveyor registered in the State of Montana.
6. Fill in Cross Index & Section Diagram at bottom of sheet.

CERTIFIED CORNER RECORDATION

Corner C-E-SE-NE 1/256, Sec. 35 T. 37 N. R. 28 W. P.M.M. Lincoln County

I. Plat No. 1750, by Kenneth Haskell, dated April 1971, and on file with the Lincoln County Clerk and Recorder:
"I. P."

II. Found a 1 1/2" diameter iron pipe 12 ins. above the ground, presumed to have been set by Haskell.

Narrative:

The Warranty Deed filed in Book 5, Pages 76 and 77, Records of Lincoln County, dated April 2, 1969 (which conveyed Tract No. 3514 to the Department Of The Army) indicates that this corner is located at a proportional 330 feet (i.e. 1/256 corner) on the Center E-W 1/64 line of the Southeast Quarter of the Northeast Quarter of Section 35. The position of the found monument is shown as being S. 0° 01' E., 1980.0 feet and N. 89° 55' W., 330.0 feet from the corner of Sections 25, 26, 35 and 36. To be consistent with the original deed, I establish this corner at the computed position for the C-E-SE-NE 1/256 corner of Section 35.

The unaccepted Haskell monument brs. S. 43° 20' 26" W., 28.84 feet.

See Certificate of Survey by 6296S in 1987 for additional information.

III. Set a 3/4" diam. x 30" long aluminum rod monument 2 ins. above the ground with a 3 1/4" diam. aluminum Forest Service cap marked as shown below:

S 35
C-E-SE-NE
1/256
6296S 1987

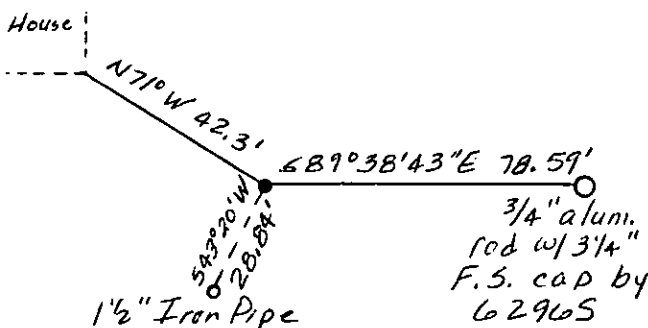
From which established the following references:

The southeast corner of a metal sided house brs. N. 71° W., 42.3 ft. dist.

A 3/4" x 30" aluminum rod monument with a 3 1/4" aluminum Forest Service cap brs. S. 89° 38' 43" E., 78.59 feet dist.

Set a guard post, with a "Survey Marker" decal attached, 2.4 ft., S. 51° 38" W. from corner.

No other accessories available as the location for this corner falls in an open field.



SKETCH OF CORNER

CERTIFICATION

I, Linda S. Smith,
certify the information shown herein to be true and correct.

I, Linda S. Smith,
certify that this Corner Record represents work performed
by me or under my direction in compliance with the "Corner
Recordation Act" (70-22-1, et seq., M.C.A.).

Date: 7/87 Reg. No. 6296S
U.S. FOREST SERVICE
Employer: _____

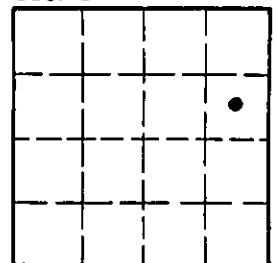
Office of Clerk and Recorder, County of Lincoln. This "corner
record" was filed for record on Aug 13, 1987

was noted on the cross-index plat and is assigned page No. 3633, in
book No. _____

County Official James BF Sigelby Deputy

Cross Index No. 5W-20.75 T. 37 N R. 28 W PMM

Sec. 35



• corner this sheet