

## INSTRUCTIONS

1. Original and/or subsequent record used to evaluate the corner position.
2. Description of evidence found, note discrepancies in the record, state method of establishing lost or obliterated corners.
3. Description of monument and accessories set to perpetuate the corner position.
4. Sketch of corner, show all pertinent data which can best be shown in a sketch example, corner marking, topography ties, position of accessories, etc.
5. Certification must be signed and sealed by Land Surveyor registered in the State of Montana.
6. Fill in Cross Index & Section Diagram at bottom of sheet.

## CERTIFIED CORNER RECORDATION

Corner SW Cor. COE Tr. 3517 & 1/1024 T. 37 N. R. 28 W. P.M.M. Lincoln County

I. No previous survey record of this corner being set.

II. No evidence found of this corner having been previously set.

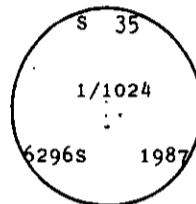
## Narrative:

Warranty Deed recorded in Book 7, Pages 214 and 215 (which created and conveyed Tract No. 3517 to the Department Of The Army) indicates the position for this corner to be 165 feet westerly from the C-N-SE 1/64 corner of Section 35. The other corner position for this parcel is shown as being midpoint. To be consistent with the original deed I therefore establish this corner at a proportional 165 feet on the East-West Center 1/64 line of the Northwest 1/4 of the Southeast 1/4 of Section 35.

See Certificate of Survey by 6296S in 1987 for additional information.

III. At corner position,

Set an aluminum rod monument 3/4 ins. diam. x 30 ins. long, 1 ins. above the ground, with a 3 1/4 ins. diam. aluminum Forest Service cap marked:



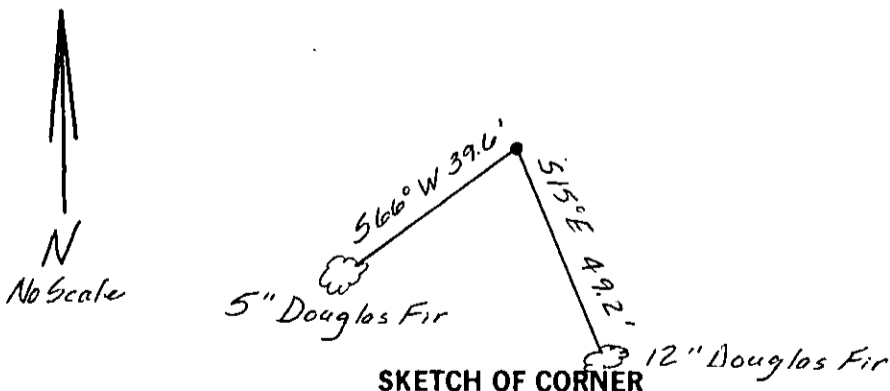
Established the following references:

A 12 ins. diam. Douglas Fir, brs S. 15° E., 49.2 ft. dist., scribed: 1/1024 S 35 BT.

A 5 ins. diam Douglas Fir, brs. S. 66° W., 39.6 ft. dist., scribed: X BT.

Set a guard post, with a "Survey Marker" decal attached, 2.0 ft. N. 20° E. from corner.

Painted red bands around the bearing trees and attached "Land Survey Monument" and "Bearing Tree" signs.



## CERTIFICATION

I, Gary Crismon  
certify the information shown herein is true and correct.

Signature of Land Surveyor

I, Linda S. Smith  
certify that this Corner Recordation was performed by me or under my direction in compliance with the "Corner Recordation Act" (70-22-101, et seq.).

Signature of Surveyor & Seal

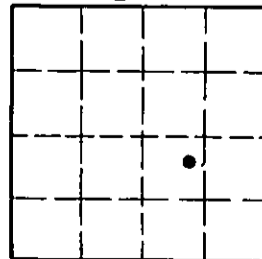
Date: 7/87 Reg. No. 6296S  
U.S. FOREST SERVICE  
Employer:

Office of Clerk and Recorder, County of Lincoln. This "corner record" was filed for record on Aug 13, 1987 was noted on the cross-index plat and is assigned page No. 3632, in book No. \_\_\_\_\_

County Official Deputy

Cross Index No. 5X-19.875 T. 37 N. R. 28 W. P.M.M.

Sec. 35



• - corner this sheet