

INSTRUCTIONS

1. Original and/or subsequent record used to evaluate the corner position.
2. Description of evidence found, note discrepancies in the record, state method of establishing lost or obliterated corners.
3. Description of monument and accessories set to perpetuate the corner position.
4. Sketch of corner, show all pertinent data which can best be shown in a sketch example, corner marking, topography ties, position of accessories, etc.
5. Certification must be signed and sealed by Land Surveyor registered in the State of Montana.
6. Fill in Cross Index & Section Diagram at bottom of sheet.

CERTIFIED CORNER RECORDATION

NW Cor. C.O.E. TR 3518, Sec. 35

Corner SW Cor. C.O.E. TR 3519, Sec. 35 T. 37 N. R. 28 W. P.M.M. Lincoln County

I. Plat No. 1839 and Plat No. 1791 by Kenneth Haskell, dated July 1971, and on file with the Lincoln County Clerk and Recorder:

"I.P."

II. Found a 1 1/4" hexagonal iron pipe, 5 ins. above ground.

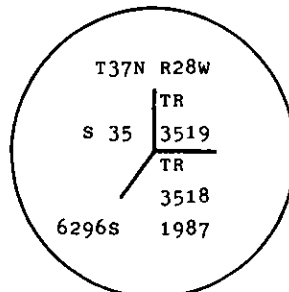
NARRATIVE:

The Warranty Deeds filed in Book 9, Pages 173, 174, 179 and 180, Records of Lincoln County, (which created and conveyed Tract Nos. 3518 and 3519 to Department Of The Army) indicate that this corner is located on the Center E-W Southerly 1/256 line of the Southeast 1/4 of the Northeast 1/4 of Section 35. The position of this corner as established by Kenneth Haskell, is shown as being S. 0° 01' E., 1650.0 feet and N. 89° 55' W., 60.0 feet from the corner of Sections 25, 26, 35 and 36. To be consistent with the original deed I establish this corner on the said 1/256 line and 60.00 feet from the position of the N-S-N 1/256 Corner between Sections 35 and 36.

The unaccepted Haskell monument brs. S. 39° 34' 16" W., 24.36 ft. dist.

See Certificate of Survey by 6296S in 1987 for additional information.

III. Set a 3/4" x 30" aluminum rod monument 2 ins. above the ground with a 3 1/4" Forest Service aluminum cap mkd:



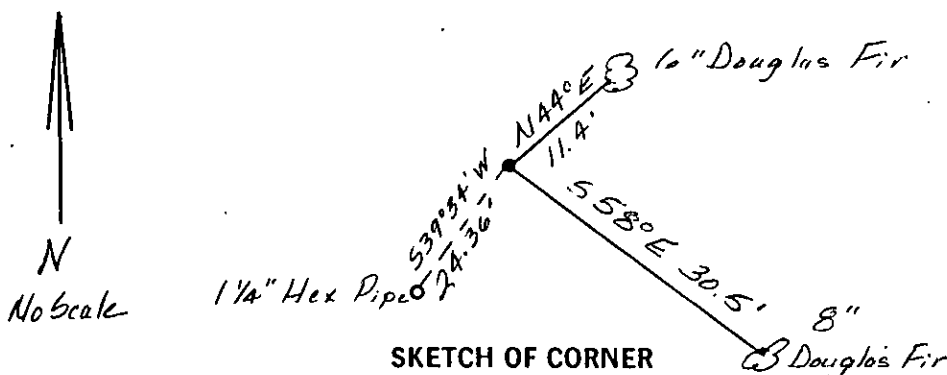
From which I established the following references:

A 6" diam. Douglas Fir, brs. N. 44° E., 11.4 ft. scribed: TR 3519 BT.

An 8" diam. Douglas Fir, brs. S. 58° E. 30.5 ft. scribed: TR 3518 BT.

Painted red bands around the bearing trees and attached "Land Survey Monument" and "Bearing Tree" signs.

Set a guard post, with a "Survey Marker" decal attached, 2.0 ft. Northerly from corner on property line.



CERTIFICATION

I, Linda S. Smith,
certify the information shown on this record is correct.

I, Linda S. Smith,
certify that this Corner Record correctly represents work performed by me or under my direction in accordance with the "Corner Recordation Act" (70-27-10, M.C.A.).

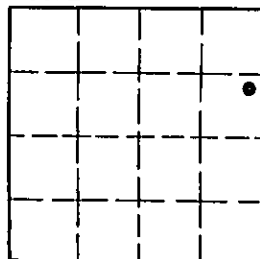
Date: 7/87 Reg. No. 6296S
Employer: U. S. FOREST SERVICE

Office of Clerk and Recorder, County of Lincoln. This "corner record" was filed for record on Aug 13, 1987

was noted on the cross-index plat and is assigned page No. 3629, in book No.

Janet E. Sugel by Sue Sugel
County Official

Sec. 35



• - corner this sheet

Cross Index No. 25W-20.9 T. 37 N R. 28 W P.M.