

## INSTRUCTIONS

1. Original and/or subsequent record used to evaluate the corner position.
2. Description of evidence found, note discrepancies in the record, state method of establishing lost or obliterated corners.
3. Description of monument and accessories set to perpetuate the corner position.
4. Sketch of corner, show all pertinent data which can best be shown in a sketch example, corner marking, topography lies, position of accessories, etc.
5. Certification must be signed and sealed by Land Surveyor registered in the State of Montana.
6. Fill in Cross Index & Section Diagram at bottom of sheet.

## CERTIFIED CORNER RECORDATION

Corner C-N-N-SE 1/256, Sec. 35 T. 37 N. R. 28 W. P.M.M. Lincoln County

I. Plat No. 1750, by Kenneth Haskell, dated April 1971, and on file with the Lincoln County Clerk and Recorder:  
"I. P."

II. Found a 1 ins. diameter iron rod, flush with the ground, presumed to have been set by Haskell.

## Narrative:

The Warranty Deed filed in Book 5, Pages 76 and 77, and Book 7, Pages 214 and 215, Records of Lincoln County, (which created and conveyed Tract Nos. 3514 and 3517 to the Department Of The Army) indicates that this corner is located on the Center N-S 1/16 line of the Southeast Quarter of Section 35. The position of the found monument is shown as being S. 0° 01' E. 1980.0 feet, N. 89° 55' W. 1320.0 feet and S. 0° 01' E., 990.0 feet from the corner of Sections 25, 26, 35 and 36. To be consistent with the original conveyance I therefore position this corner on the Center N-S 1/16 line at a proportional 330 feet (i.e. 1/256 Corner) from the C-E 1/16 Corner of Section 35.

The unaccepted Haskell monument brs. S. 63° 57' W., 36.40 feet.

See Certificate of Survey by 6296S in 1987 for additional information.

III. Set a 3/4" diam. x 30" long aluminum rod monument 1 ins. above the ground with a 3 1/4" diam. aluminum Forest Service cap marked as shown below:

S 35  
C-N-N-SE  
1/256  
6296S 1987

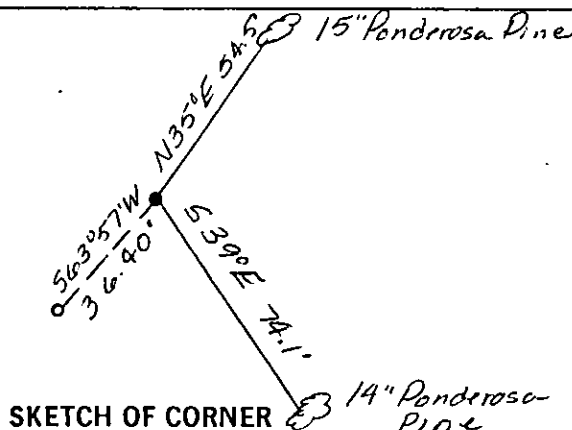
From which I established the following references:

A 15 ins. diam. Ponderosa Pine, brs. N. 35° E., 54.5 ft. dist. scribed: C-N-N-SE 1/256 S35 BT.

A 14 ins. diam. Ponderosa Pine, brs. S. 39° E., 74.1 ft. dist. scribed: X BT.

Set a guard post, with a "Survey Marker" decal attached, 2.0 ft. Northeasterly from corner.

Painted red bands around the bearing trees and attached "Land Survey Monument" and "Bearing Tree" signs.



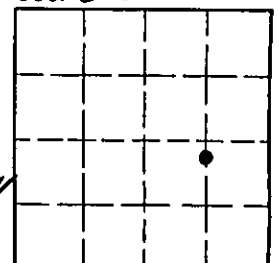
SKETCH OF CORNER

## CERTIFICATION

I, Linda S. Smith,  
certify the information shown here is true and correct.  
*Linda S. Smith*  
Signature of Surveyor  
I, Linda S. Smith,  
certify that this Corner Record correctly represents work performed  
by me or under my direction in accordance with the "Corner  
Recordation Act" (70-220, et seq., M.C.A.)  
*Linda S. Smith*  
Signature of Surveyor & Seal  
Date: 7/87 Reg. No. 6296S  
U.S. FOREST SERVICE  
Employer: \_\_\_\_\_

Office of Clerk and Recorder, County of Lincoln. This "corner  
record" was filed for record on Aug 13, 1987  
was noted on the cross-index plat and is assigned page No. 3628, in  
book No. \_\_\_\_\_  
*Janet BF Sigel by Seal Sigel*  
County Official Dep.

Sec. 35



• - corner this sheet

Cross Index No. 25X-20 T. 37 N R. 28 W P.M.M.