

INSTRUCTIONS

1. Original and/or subsequent record used to evaluate the corner position.
2. Description of evidence found, note discrepancies in the record, state method of establishing lost or obliterated corners.
3. Description of monument and accessories set to perpetuate the corner position.
4. Sketch of corner, show all pertinent data which can best be shown in a sketch example, corner marking, topography lies, position of accessories, etc.
5. Certification must be signed and sealed by Land Surveyor registered in the State of Montana.
6. Fill in Cross Index & Section Diagram at bottom of sheet.

CERTIFIED CORNER RECORDATION

Corner Cor. 2 C.O.E. Tr. 3510, Sec. 25 T. 37 N. R. 28 W. P.M.M. Lincoln County

- I. (1) Plat Nos. 1588 and 1749, by Kenneth Haskell, dated April 1969 and April 1971 respectively, and on file with the Lincoln County Clerk and Recorder:
"I.P."
- (2) Lake Koocanusa Cadastral Map by Army Corps of Engineers district file No. E 53-1-154 dated 1972:
"Standard U.S.C.E. Disc"
- (3) P. F. Plat No. 4297, by Ken Davis, dated April 1985 on file with the Lincoln County Clerk and Recorder:
"Found 3 1/4 inch dia. C. of E. Alum. Cap in Concrete"
"Found 15 inch dia. fence post for corner - treated"
- II. (1) Found 1 ins. diam. iron pipe, flush with ground and under gate pole (attached to 15" diam. fence post corner, see (3) below.).
- (2) Found 1972 U.S. Army Corps of Engineers Brass Cap 3 1/4 ins. in diam., set in concrete flush with the ground (1" iron pipe brs. S. 5° W., 11.75 feet), marked as shown below:

U.S. PROJ. BNDY.

YEAR 1972

3510-2

From which a red iron fence post Brs. NORTH 1.2 ft.

(3) Found 15 ins. diam. treated fence post.

NARRATIVE:

This corner is on a boundary first established by a legal description recorded in Book 4 Pages 292 and 293, Records of Lincoln County. (the description calls for corners to be at distances of 990 feet, 495 feet and 825 feet). The parcel was transferred on February 13, 1969 to the Department of Army by the document recorded in Book 4 Pages 673 and 674, (the attached exhibit shows corners to be at distances of 990 feet, 495 feet and 825 feet) it also shows the line between the corner of Sections 25, 26, 35 and 36 and the one-quarter corner of Sections 25 and 26 to be 2640 feet, retracement finds the distance to be 2654.98 feet. In June of 1969 Kenneth Haskell monumented the boundary as shown on Plat No. 1588, Records of Lincoln County. Haskell held the distances of 990 feet, 825 feet and 495 feet to establish his monuments (this resulted in the excess of approximately 15 feet being shifted to the northern portion of the parcel). The Army Corps of Engineers monumented the boundary in 1972. Their corner positions are based upon a Section Subdivision, which positioned corners at proportional 990 foot, 495 foot and 825 foot distances (I confirmed their corner positions and Section Subdivision using their found positions for controlling corners which are now under Lake Koocanusa). In April of 1985 Ken Davis subdivided a portion of the original parcel using a found Haskell monument and fence posts. I believe the intent of the original deed was to establish a parcel with an aliquot 15 acre (495 feet by 495 feet) parcel controlling the boundaries. Therefore I accept the monuments established by the Army Corps of Engineers. See Certificate of Survey by 6296S in 1987 for additional information.

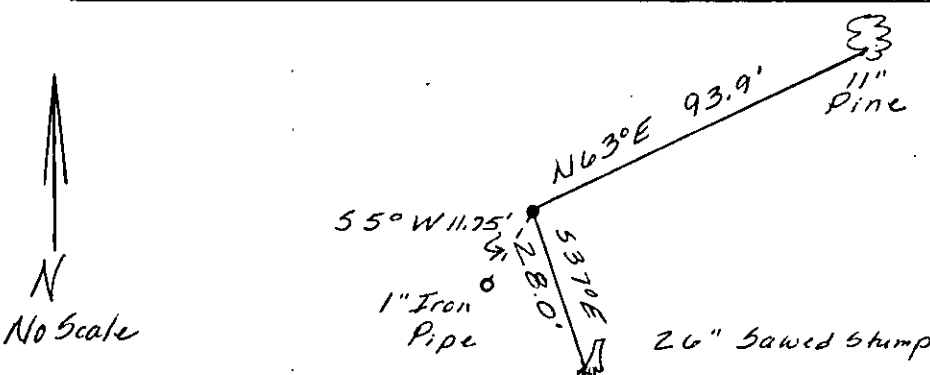
III. From the accepted C.O.E. monument I establish the following bearing trees:

A 2 1/2 ft. by 26" diam. sawed stump brs. S. 37° E., 28.0 feet, with appropriate signs.

An 11" Pine, brs. N. 63° E., 93.9 feet scribed: TR 3510-2 BT.

Set a galvanized steel post with survey marker and property boundary decals, S. 26° E. 2.0 ft.

Painted red bands around the bearing trees and attached "Land Survey Monument" and "Bearing Tree" signs.



SKETCH OF CORNER

CERTIFICATION

I, Gary Crismon

certify the information shown here is true and correct.

[Signature]
 Signature of Publicity Chief
 LINDA S. SMITH
 6296S
 REGISTERED
 LAND SURVEYOR

I, Linda S. Smith
 certify that this Corner Record correctly represents work performed by me or under my direction in accordance with the "Corner Recordation Act" (702 M.C.A., et seq., M.C.A.)

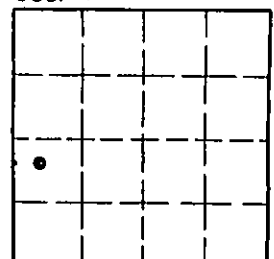
[Signature]
 Signature of Surveyor & Recorder

Date: 7/1987 Reg. No. 6296SEmployer: U.S. FOREST SERVICEOffice of Clerk and Recorder, County of Lincoln. This "cornerrecord" was filed for record on Aug. 13, 1987was noted on the cross-index plat and is assigned page No. 3627, in

book No. _____

Cross Index No. 375U-21.375 T. 37 N R. 28 W P.M.M.

Sec. 25



• corner this sheet