

# INSTRUCTIONS

1. Original and/or subsequent record used to evaluate the corner position.
2. Description of evidence found, note discrepancies in the record, state method of establishing lost or obliterated corners.
3. Description of monument and accessories set to perpetuate the corner position.
4. Sketch of corner, show all pertinent data which can best be shown in a sketch example, corner marking, topography ties, position of accessories, etc.
5. Certification must be signed and sealed by Land Surveyor registered in the State of Montana.
6. Fill in Cross Index & Section Diagram at bottom of sheet.

## CERTIFIED CORNER RECORDATION

Sec. 26, SE $\frac{1}{4}$ , NE $\frac{1}{4}$   
Corner U.S. Project Boundary T. 37N R. 28W P.M.M. Lincoln County

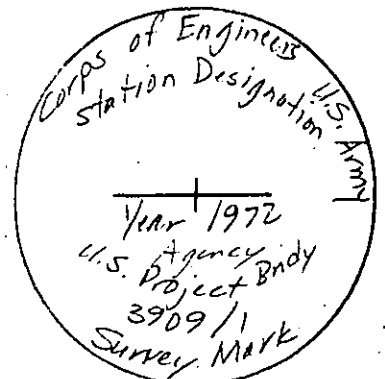
No GLO corner established at this point.

Found Corps of Engineers, U.S. Army Project Boundary marker, a 4 $\frac{1}{2}$ " square concrete monument w/ brass cap marked as noted below, no bearing trees.

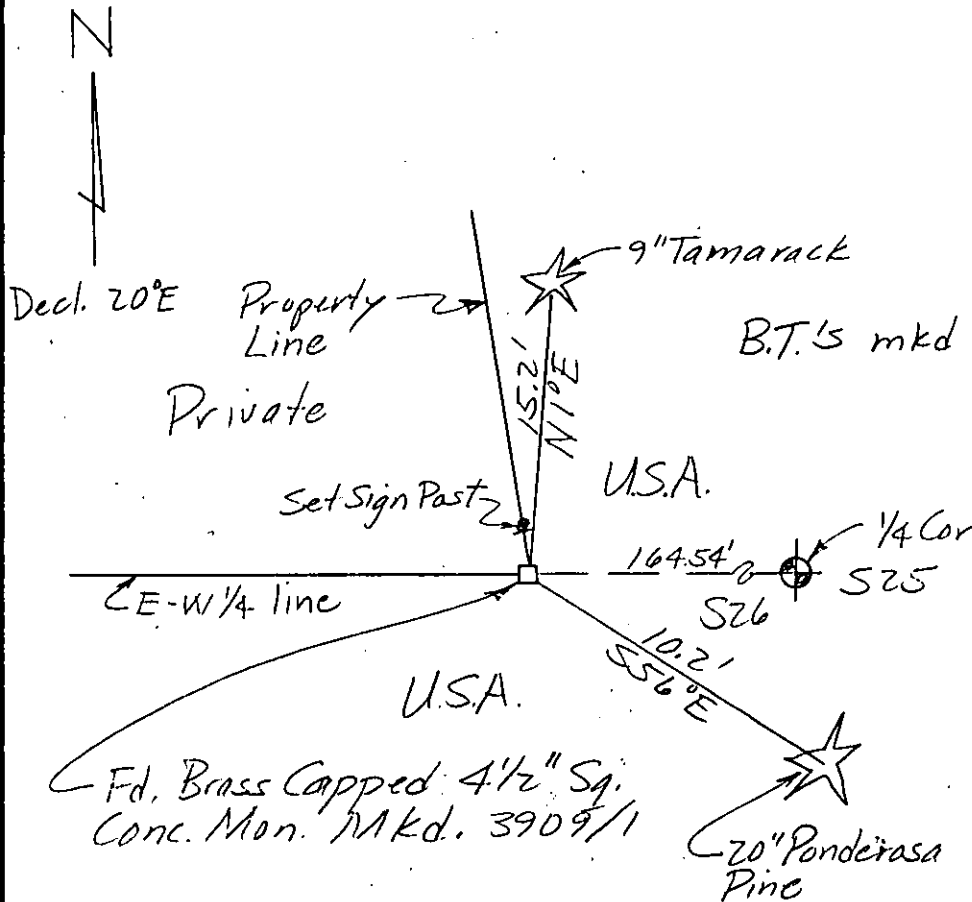
Set bearing tree witnesses: 9" Tamarack N1 $^{\circ}$ E 15.2 feet mkd. S26/3909/1 BT, signed and painted as per USFS Specs.

20" Ponderosa Pine S56 $^{\circ}$ E 10.2 feet mkd. S26/3909/1<sup>BT</sup>, signed and painted as per USFS Specs.

Set a steel sign post N. of mon.



Cap Marked



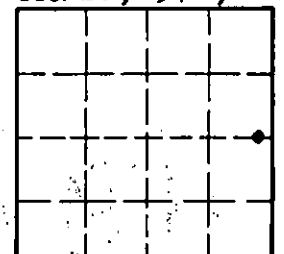
CERTIFICATION	
I, <u>Dennis D. Findorff</u>	
certify the information shown herein is true and correct.	
Signature Ground Party Chief	
I, <u>Robert E. Findorff</u>	
certify that this Corner Record correctly represents work performed by me or under my direction in compliance with the "Corner Recordation Act" (MCA 1-2-101, et seq., M.C.A.)	
Signature of Surveyor & Seal	
Date: <u>6/6/87</u>	Reg. No. <u>3976ES</u>
Employer: <u>Self</u>	

### SKETCH OF CORNER (SEE ABOVE)

Office of Clerk and Recorder, County of Lincoln. This "corner record" was filed for record on June 30, 1987 was noted on the cross-index plat and is assigned page No. 3575, in book No. \_\_\_\_\_

Janet BF Sugel by Bill Sugel  
County Official Deputy

Sec. 26, T37N, R28W



Cross Index No. T 20-21 T. 37N R. 28W PMM

Adopted July 1, 1981, Montana Board of Professional Engineers & Land Surveyors

• - corner this sheet