

# INSTRUCTIONS

1. Original and/or subsequent record used to evaluate the corner position.
2. Description of evidence found, note discrepancies in the record, state method of establishing lost or obliterated corners.
3. Description of monument and accessories set to perpetuate the corner position.
4. Sketch of corner, show all pertinent data which can best be shown in a sketch example, corner marking, topography ties, position of accessories, etc.
5. Certification must be signed and sealed by Land Surveyor registered in the State of Montana.
6. Fill in Cross Index & Section Diagram at bottom of sheet.

## CERTIFIED CORNER RECORDATION

Section 26, SE $\frac{1}{4}$ , NE $\frac{1}{4}$   
Corner U.S. Project Boundary T. 37N R. 28N P.M.M. Lincoln County

No GLO corner established at this point.

Found Corps of Engineers, U.S. Army Project Boundary marker, a 4 $\frac{1}{2}$ " square concrete monument w/ brass cap marked as noted below, at corner of NEly and SE'ly wood rail fence. No bearing trees.

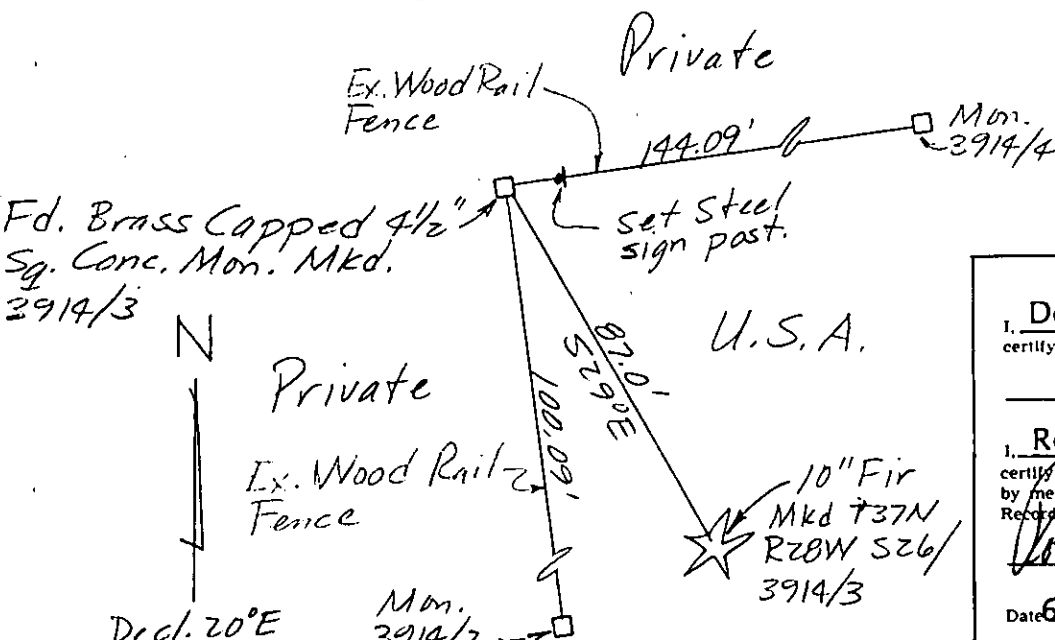
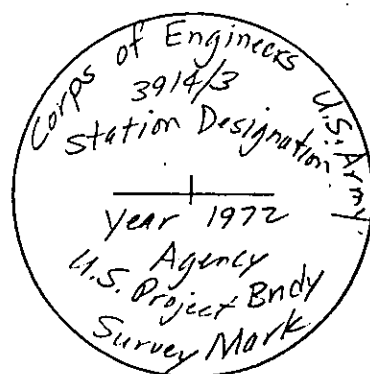
Set bearing tree witness: 10" fir S29°E 87.0 feet mkd. T37N R28W S26/3914/3 BT, signed and painted as per USFS Specs.

No other trees available on USA land.

A monument as per above description mkd. 3914/4 bears N83°E 144.09 feet at fence corner.

A monument as per above description mkd. 3914/2 bears S11°E 100.09 feet at fence corner.

Set steel sign post E. of mon.



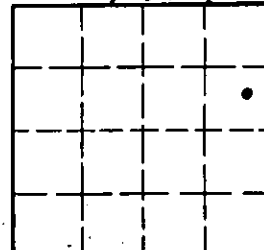
SKETCH OF CORNER (SEE ABOVE)

CERTIFICATION	
I, <u>Dennis D. Findorff</u>	
certify the information shown herein is true and correct.	
Signature Ground Party Chief	
I, <u>Robert E. Findorff</u>	
certify that this Corner Record correctly represents work performed by me or under my direction in compliance with the "Corner Recordation Act" (M.C.A. 10-5-101, et seq., M.C.A.)	
Signature of Surveyor & Seal	
Date <u>6/6/87</u>	Reg. No. <u>3976ES</u>
Employer: <u>Self</u>	

Office of Clerk and Recorder, County of Lincoln. This "corner record" was filed for record on June 30, 1987 was noted on the cross-index plat and is assigned page No. 3574, in book No.         

Robert E. Findorff  
County Official Deputy

Sec. 26, T37N, R28W



• corner this sheet

Cross Index No. S-T 20-21 T. 37N R. 28W P.M.M.

Adopted July 1, 1981, Montana Board of Professional Engineers & Land Surveyors