

INSTRUCTIONS

1. Original and/or subsequent record used to evaluate the corner position.
2. Description of evidence found, note discrepancies in the record, state method of establishing lost or obliterated corners.
3. Description of monument and accessories set to perpetuate the corner position.
4. Sketch of corner, show all pertinent data which can best be shown in a sketch example, corner marking, topography ties, position of accessories, etc.
5. Certification must be signed and sealed by Land Surveyor registered in the State of Montana.
6. Fill in Cross Index & Section Diagram at bottom of sheet.

CERTIFIED CORNER RECORDATION

Corner W W C-C 1/64, Sec. 24 T. 37N R. 28W P.M.M. Lincoln County

No GLO corner set at this point.

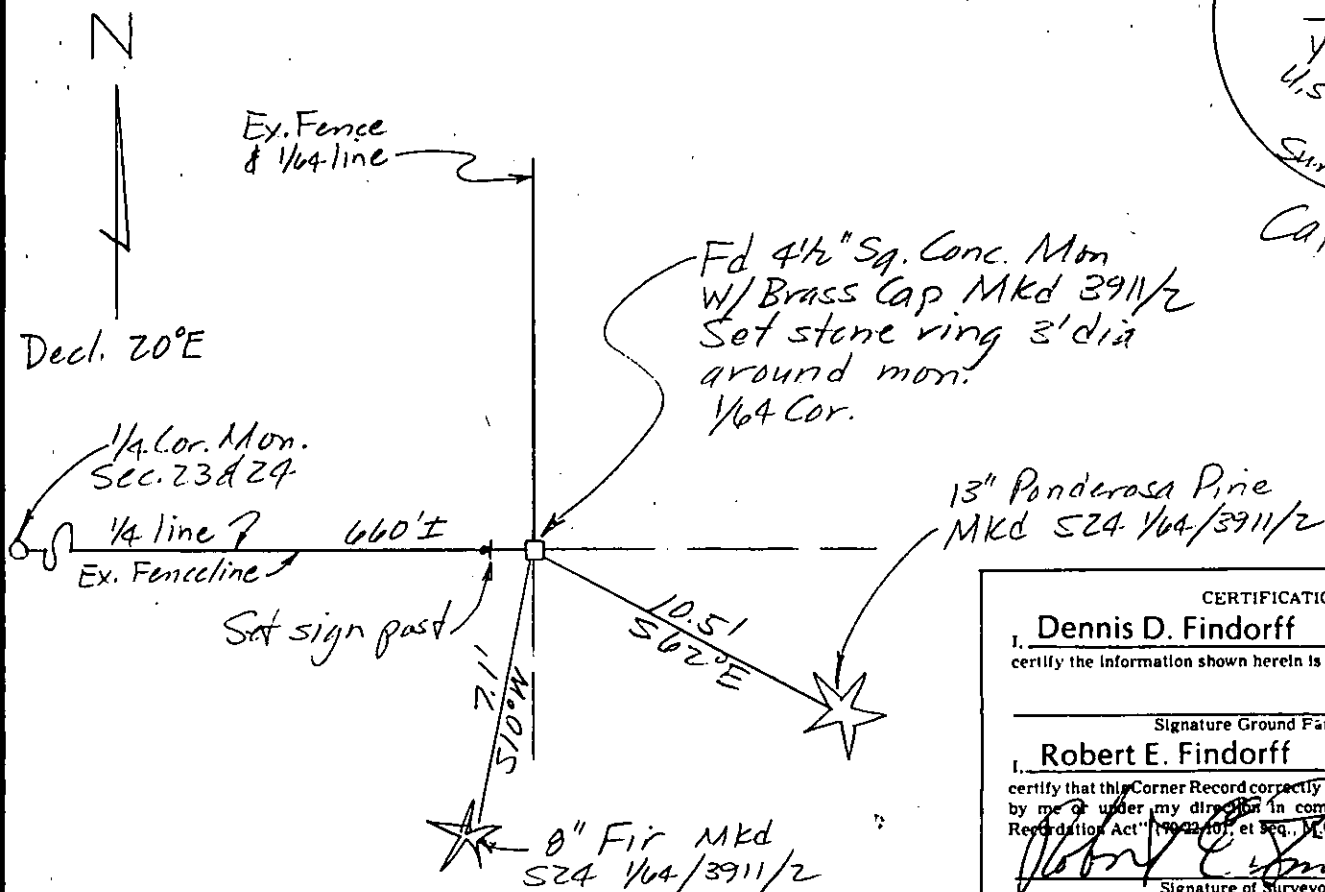
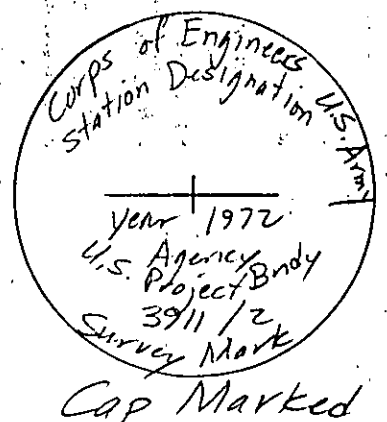
Found Corps of Engineers, U.S. Army Project Boundary marker, a $4\frac{1}{2}$ " square concrete monument w/ brass cap marked as noted below, at fence corner to West and North. No bearing trees.

Set bearing tree witnesses: 13" Ponderosa Pine S62°E 10.5 feet mkd. S24 1/64 / 3911/2 BT, signed and painted as per USFS Specs.

8" Fir S10°W 7.1 feet mkd. S24 1/64 / 3911/2 BT, signed and painted as per USFS Specs.

Set ring of stones 3' dia around corner mon.

Set steel sign post W. of mon.



SKETCH OF CORNER (SEE ABOVE)

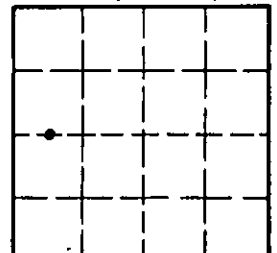
CERTIFICATION	
I, <u>Dennis D. Findorff</u>	
certify the information shown herein is true and correct.	
Signature Ground Party Chief	
I, <u>Robert E. Findorff</u>	
certify that this Corner Record correctly represents work performed by me or under my direction in compliance with the "Corner Recordation Act" (1902-1907, et seq., M.C.A.)	
Signature of Surveyor & Seal	
Date: <u>6/6/87</u>	Reg. No. <u>3976ES</u>
Employer: <u>Self</u>	

Office of Clerk and Recorder, County of Lincoln. This "corner record" was filed for record on June 30, 1987 was noted on the cross-index plat and is assigned page No. 3570, in book No. _____

Cross Index No. P 21 1/2 T. 37N R. 28W P.M.M.

Adopted July 1, 1981, Montana Board of Professional Engineers & Land Surveyors

Sec. 24, T37N, R28W



• corner this sheet